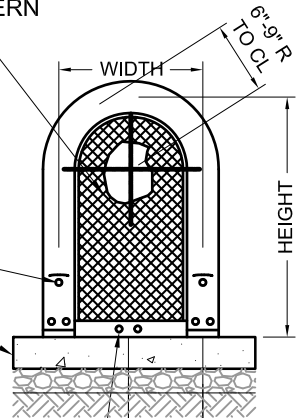


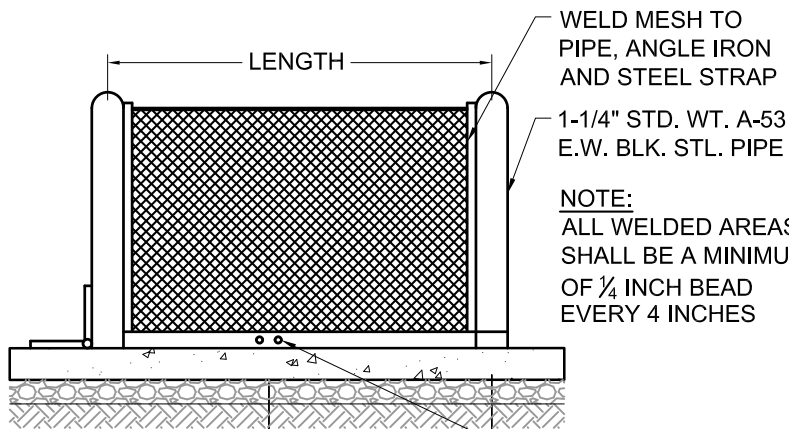
1/2-INCH NO. 13 FLATTED
DIAMOND PATTERN
STEEL MESH

WELD 4-INCH
STL. HINGES (2)
ON GS-3 AND
GS-4

4-INCH
CONCRETE
PAD



- DRILL 2 HOLES AS NOTED
- GS-1 EACH END
 - GS-2 EACH END
 - GS-3 ONE END ONLY
 - GS-3.5 SAME AS GS-2H
 - GS-4 SAME AS GS-2H
- 6" GS 1-2-3
9" GS-4



NOTE:
ALL WELDED AREAS
SHALL BE A MINIMUM
OF 1/4 INCH BEAD
EVERY 4 INCHES

DRILL 2 - 5/16 INCH
HOLES EACH SIDE.
BRACKETS CAN BE
LOCATED ON
SIDES OR ENDS
AND SECURED
WITH TAMPER
PROOF BOLTS

STD. SIZES	CENTERLINE DIMENSIONS		WEIGHT
GS-.5	12"W x 18"H x 12"L	LIFT OFF UNIT	35
GS-1	12"W x 24"H x 24"L	LIFT OFF UNIT	40
GS-2	12"W x 24"H x 32"L	LIFT OFF UNIT	45
GS-3	12"W x 24"H x 42"L	HINGED UNIT	51
GS-4	18"W x 30"H x 48"L	HINGED UNIT	67

NOTE:
GS = POWDER-COATED STEEL GUARDSHACK OR APPROVED EQUAL

NOTES:

1. AFTER ALL WELDING, ENTIRE UNIT SHALL BE PROCESSED WITH IRON PHOSPHATE PRE-TREATMENT. ELECTROSTATIC APPLICATION OF POWDER SHALL BE FUSION BONDED. POWDERCOAT COLOR SHALL BE BLACK.
2. ALL BOLTS FOR HINGES AND HASPS SHALL BE ZINC-PLATED TAMPER PROOF, EXCEPTION - USE SS HARDWARE FOR SS UNITS.
SS = STAINLESS STEEL
3. REFER TO SPECIFICATIONS FOR MODEL NUMBER
4. REFER TO CITY STANDARD DETAIL LSD-14 FOR ALL MATERIALS

<h2 style="margin: 0;">CITY OF FREMONT</h2> <h3 style="margin: 0;">STANDARD DETAILS</h3> <h3 style="margin: 0;">CITY STANDARD</h3> <h3 style="margin: 0;">BACKFLOW PREVENTER</h3> <h3 style="margin: 0;">UNIT ENCLOSURE</h3>			DATE APPROVED BY CITY COUNCIL 12/13/11				
			RESOLUTION NO. 2006-31				
			CITY ENGINEER				
			DWG NO. LSD-17				
APPR	REVISED	DATE	DRAWN	CHECKED	DATE	DWG NO.	1 of 1
REVISIONS			AK/MM/PN	RER	NOV. 2005	LSD-17	
FILE NO.	SCALE						
LSD-17.DWG	1/2" = 1'-0"						