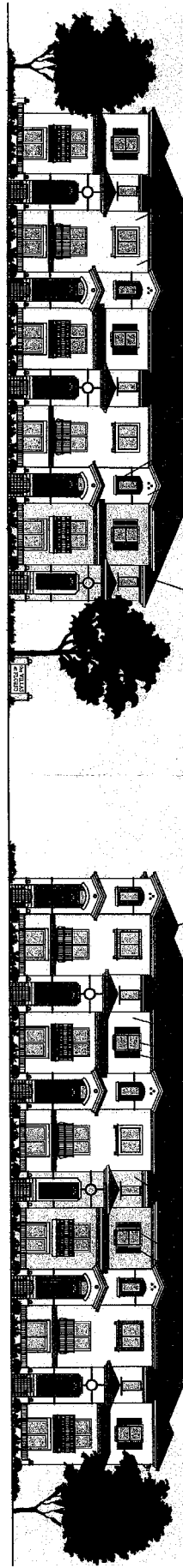


ELEVATION AS SEEN FROM FREMONT BLVD.

1/4" = 6'-0"

INFORMATIONAL 2



ELEVATION AS SEEN FROM CAROL AVENUE

1/4" = 6'-0"

- BODY : DEC 748 (OYSTER)
- TRIM : DEC 774 (SHADY)
- ACCENT : DE 5310 (CIDER WOOD)
- BODY : DEC 737 (JAKAR' A)
- TRIM : DEC 765 (BONE)
- ACCENT : DEA 159 (RICH MOCHA)
- ROOF TILE : 5501 OAKWOOD
- BODY : DE 6268 (PEARLY STAR)
- TRIM : DE 6269 (PARTICULAR MINT)
- ACCENT : DEA 6269 (DRIED CHIVE)
- BODY : DEC 743 (HIGH NOON)
- TRIM : DE 6219 (CRYSTAL HAZE)
- ACCENT : DE 6248 (SPOCKY)

ALL COLORS BY DUNN-EDWARDS
 ROOF BY EAGLE ROOFING PRODUCTS



EDWARD L. RINEHART
 AIA, ARCHITECT

107 CHURCH STREET - SALINAS - CALIFORNIA 93901
 P: (831) 424-2950
 E: edward@edlra.net

25 TOWNHOMES FOR:
FLORIO DEVELOPMENT CO.
 41482 FREMONT BLVD
 FREMONT - CALIFORNIA 94538

REVISED: 1/1/10

87.13%
 DATE ISSUED: 7/20/10

SHEET NO.
A-1
 OF 19 SHEETS

0910