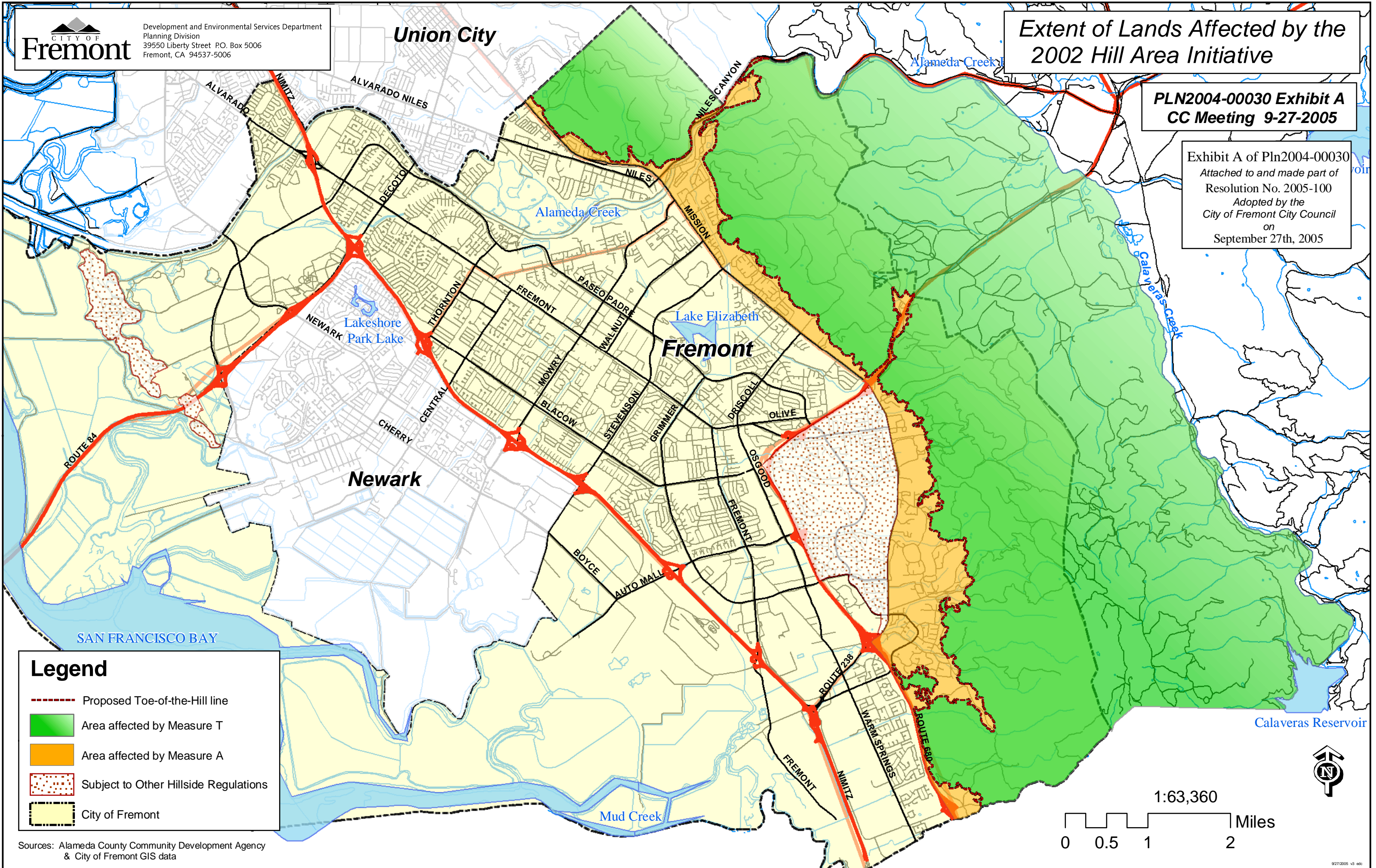


**Extent of Lands Affected by the
 2002 Hill Area Initiative**

**PLN2004-00030 Exhibit A
 CC Meeting 9-27-2005**

Exhibit A of Pln2004-00030
 Attached to and made part of
 Resolution No. 2005-100
 Adopted by the
 City of Fremont City Council
 on
 September 27th, 2005



Legend

- Proposed Toe-of-the-Hill line
- Area affected by Measure T
- Area affected by Measure A
- Subject to Other Hillside Regulations
- City of Fremont

Sources: Alameda County Community Development Agency & City of Fremont GIS data

1:63,360
 0 0.5 1 2 Miles

