

# Protected Intersections

Protected intersections are intersections in which bicyclists and pedestrians are separated from cars. Protected intersections shorten crossing distances, ensure cars take turns at safe speeds, and provide a more comfortable bike facility.

## As a bicyclist:

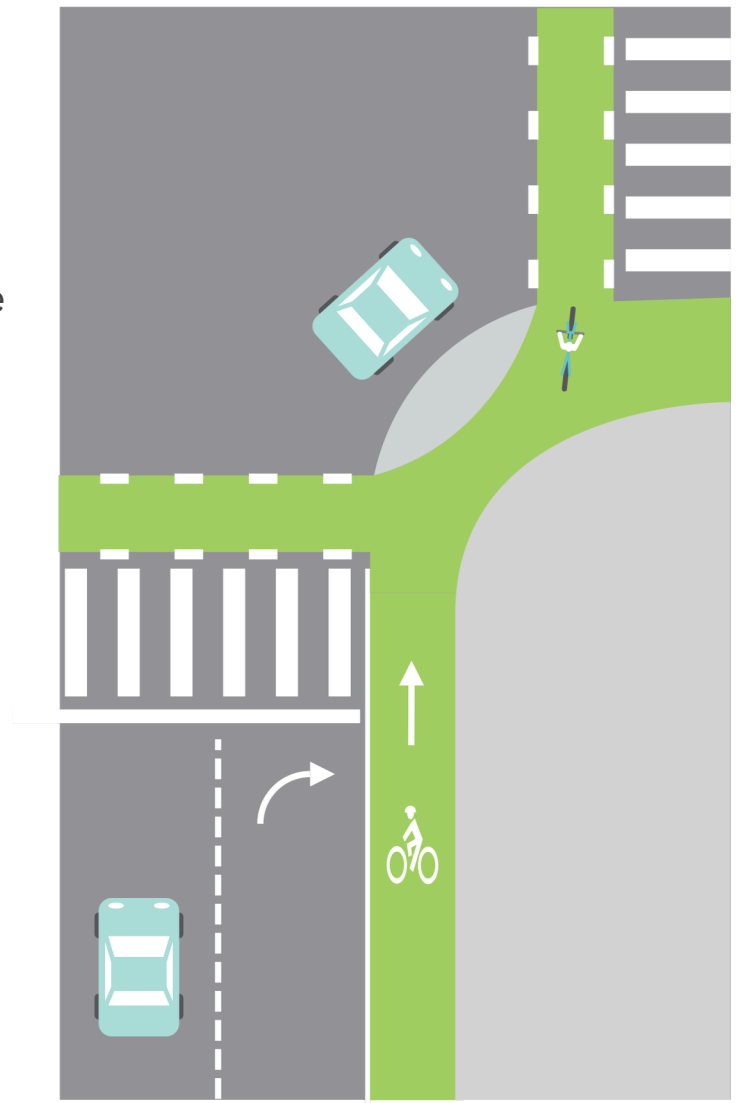
- Yield to pedestrians at all crosswalks. Pedestrians have the right-of-way when they must cross the bike lane.
- Make left turns in “two stages” by going straight to the far side of the intersection, and then turning left.

## As a pedestrian:

- Be aware bicyclists may be present in or near crosswalks at intersections.

## As a motorist:

- Yield to bicyclists and pedestrians before making a right turn, as at a normal intersection.
- Check to make sure right turns on red are not prohibited.



To view instructional videos on how to use new traffic safety signs, pavement markings, and traffic control devices visit

<https://city.fremont.gov/safetyvisionzero>