



CARLSBAD  
FRESNO  
IRVINE  
LOS ANGELES  
PALM SPRINGS  
POINT RICHMOND  
RIVERSIDE  
ROSEVILLE  
SAN LUIS OBISPO

September 19, 2019

Shawn Dillon  
Project Manager  
355 Goodpasture Island Road #300  
Eugene, Oregon 97401

Subject: Plant Survey and Wetland Mapping Report  
43510 Osgood Road, Fremont, Alameda County

Dear Mr. Dillon:

LSA completed a focused rare plant survey and mapped the seasonal wetland at the 43510 Osgood Road project site in the City of Fremont. These efforts were conducted as a follow-up to LSA's previous reconnaissance-level survey conducted at the site on August 14, 2019. Based on the reconnaissance-level survey, potentially suitable habitat was determined to be present for four special-status plants species, and a potentially jurisdictional seasonal wetland was identified at the northeast corner of the project site near an off-site wetland channel.

## METHODS

On September 10, 2019, LSA botanist Talaya Rachels conducted a focused survey for special-status plant species at the project site and mapped the potentially jurisdictional seasonal wetland in the site's the northeast corner. Target special-status plant species that had the potential to occur within the ruderal non-native annual grassland on the site (Figure 1) included brittlescale (*Atriplex depressa*), lesser saltscale (*Atriplex minuscula*), and Congdon's tarplant (*Centromadia parryi* ssp. *congdonii*), while the seasonal wetland along the northeastern boundary of the site could support suitable habitat for the long-styled sand-spurrey (*Spergularia macrotheca* var. *longistyla*).

## RESULTS

### Special-Status Plant Survey

No special-status plant species or genera of the target special-status species were observed during the focused plant survey. The survey coincided with the blooming period for the brittlescale, lesser saltscale, and Congdon's tarplant, but did not coincide with the blooming period for the long-styled sand-spurrey, which blooms from February to May. The long-styled sand-spurrey could occur in the seasonal wetland and off-site wetland channel along the northeastern boundary of the project site, but the project will not impact the off-site channel and the on-site seasonal wetland is likely too disturbed to support this plant species. A list of the tree and shrub species (not including tree species, which are listed in the project arborist report) observed during the survey is attached.

### Wetland Survey and Mapping

The seasonal wetland was more accurately mapped in the northeast corner of the project site (Figure 1). Plants observed at the seasonal wetland consist of rough cocklebur (*Xanthium strumarium*), tall flatsedge (*Cyperus eragrostis*), Harding grass (*Phalaris aquatica*), alkali mallow (*Malvella leprosa*), bristly ox-tongue (*Helminthotheca echioides*), and curly dock (*Rumex crispus*).

Please contact me at (510) 236-6810 or at dan.sidle@lsa.net, or Tim Lacy, Principal in Charge, at (510) 236-6810 or at tim.lacy@lsa.net, if you have any questions regarding the plant survey and wetland mapping.

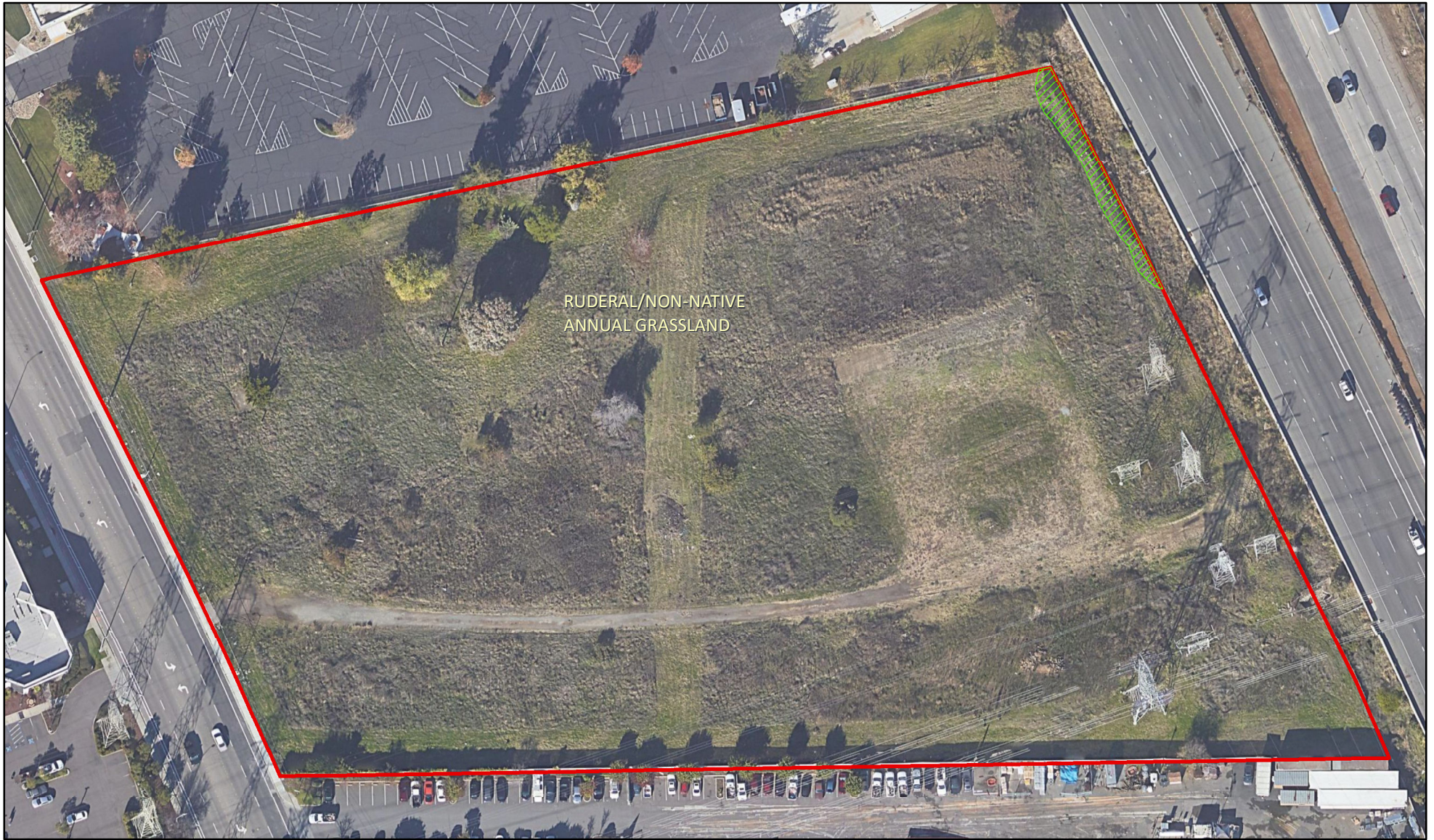
Sincerely,

**LSA Associates, Inc.**



Daniel J. Sidle  
Associate/Senior Biologist



Attachment: Revised Figure 1: Existing Conditions  
List of Herbaceous and Shrub Plant Species Observed During the Plant Survey



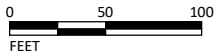
RUDERAL/NON-NATIVE  
ANNUAL GRASSLAND

LSA

LEGEND

-  Project Site
-  Potentially Jurisdictional Seasonal Wetland (Approximate location)

*Trees locations are depicted in Arborist Report.*



SOURCE: Google Hybrid Map (07/2019).

I:\PPE1901\GIS\Maps\Bio Report\Figure 1\_Existing Conditions.mxd (9/13/2019)

FIGURE 1

43510 Osgood Road  
Fremont, Alameda County, California  
Existing Conditions

**LIST OF HERBACEOUS AND SHRUB PLANT SPECIES  
OBSERVED DURING THE PLANT SURVEY**

Wild oats	<i>Avena</i> sp.
Mediterranean barley	<i>Hordeum marinum</i>
Bermuda grass	<i>Cynodon dactylon</i>
Harding grass	<i>Phalaris aquatica</i>
Prickly lettuce	<i>Lactuca serriola</i>
Italian thistle	<i>Carduus pycnocephalus</i>
Milk thistle	<i>Silybum marianum</i>
Mustard	<i>Brassica</i> and/or <i>Hirschfeldia</i> spp.
Russian knapweed	<i>Acroptilon repens</i>
Prostrate knotweed	<i>Polygonum aviculare</i> ssp. <i>depressum</i>
Burclover	<i>Medicago polymorpha</i>
English plantain	<i>Plantago lanceolatum</i>
Chicory	<i>Cichorium intybus</i>
Stinkwort	<i>Dittrichia graveolens</i>
Sweet fennel	<i>Foeniculum vulgare</i>
Bristly ox-tongue	<i>Helminthotheca echioides</i>
Field bindweed	<i>Convolvulus arvensis</i>
Perennial pepperweed	<i>Lepidium latifolium</i>
Wild radish	<i>Raphanus sativus</i>
Ivy	<i>Hedera</i> sp.
Alkali mallow	<i>Malva leprosa</i>
Cheeseweed mallow	<i>Malva parviflora</i>
Alkali heath	<i>Frankenia salina</i>
Narrow leaf cattail	<i>Typha angustifolia</i>
Rough cocklebur	<i>Xanthium strumarium</i>
Tall flatsedge	<i>Cyperus eragrostis</i>
Curly dock	<i>Rumex crispus</i>
Fiddle dock	<i>Rumex pulcher</i>
Fleabane	<i>Pluchea</i> sp.
Coyote brush	<i>Baccharis pilularis</i>