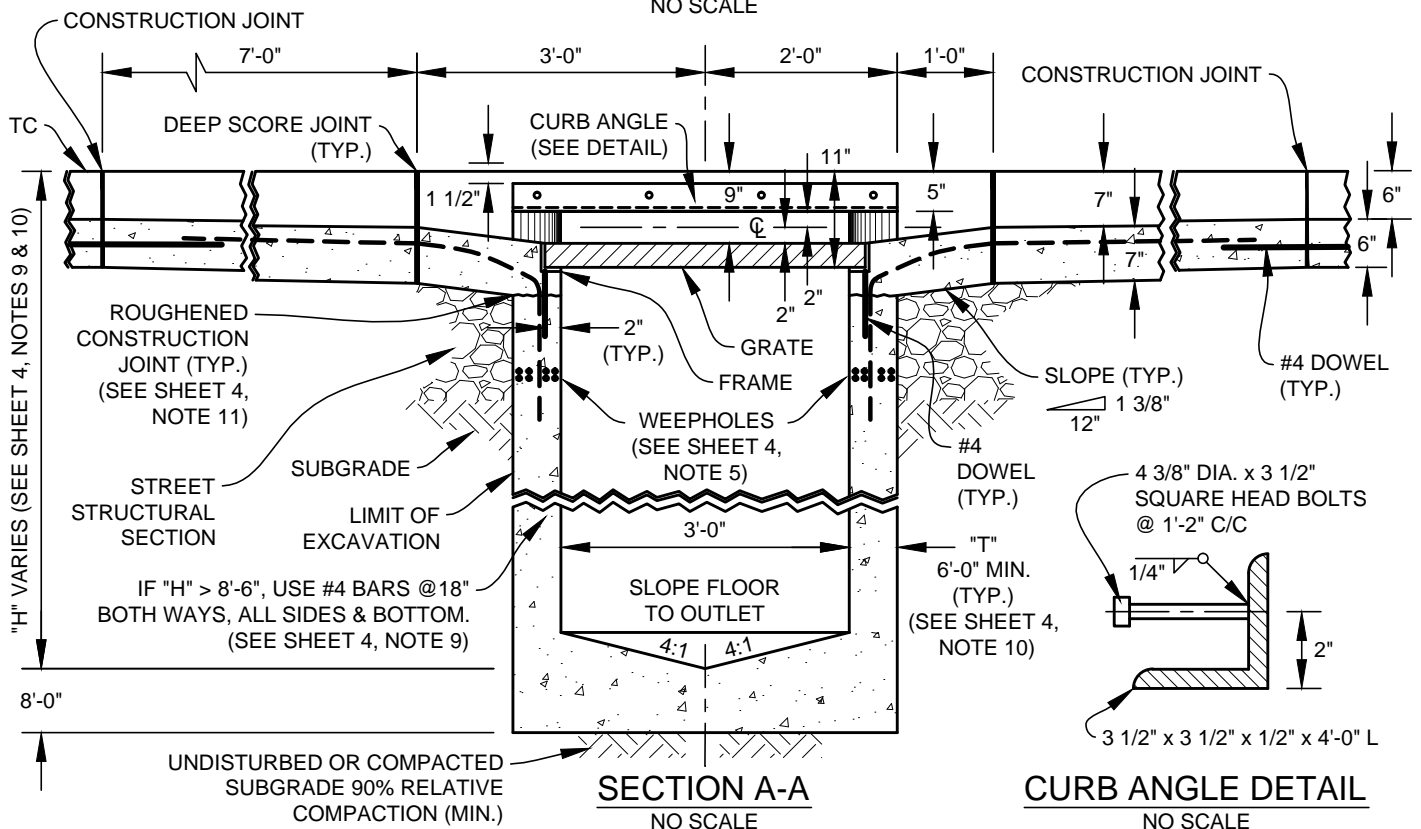


**PLAN VIEW**  
NO SCALE



**SECTION A-A**  
NO SCALE

**CURB ANGLE DETAIL**  
NO SCALE

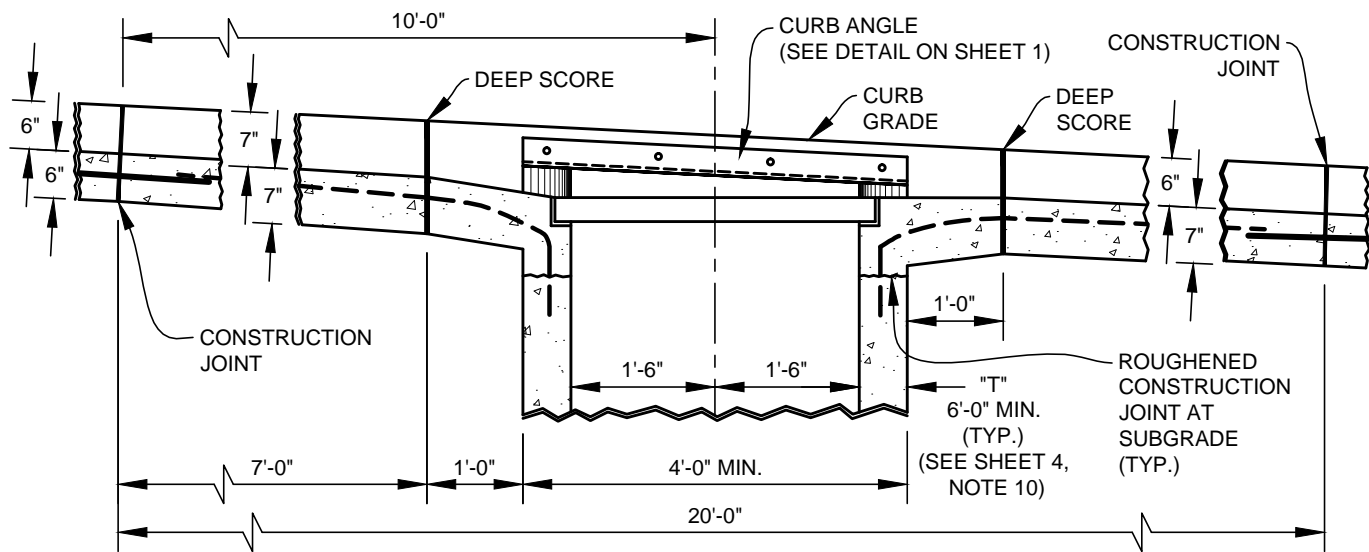
NOTE: FOR REINFORCING REQUIREMENTS SEE SHEET 4, NOTE 9.

APPR	REVISION	DATE
<i>MJ</i>	MISC REVISIONS	6/09
<i>KB</i>	GENERAL REVISION	7/22

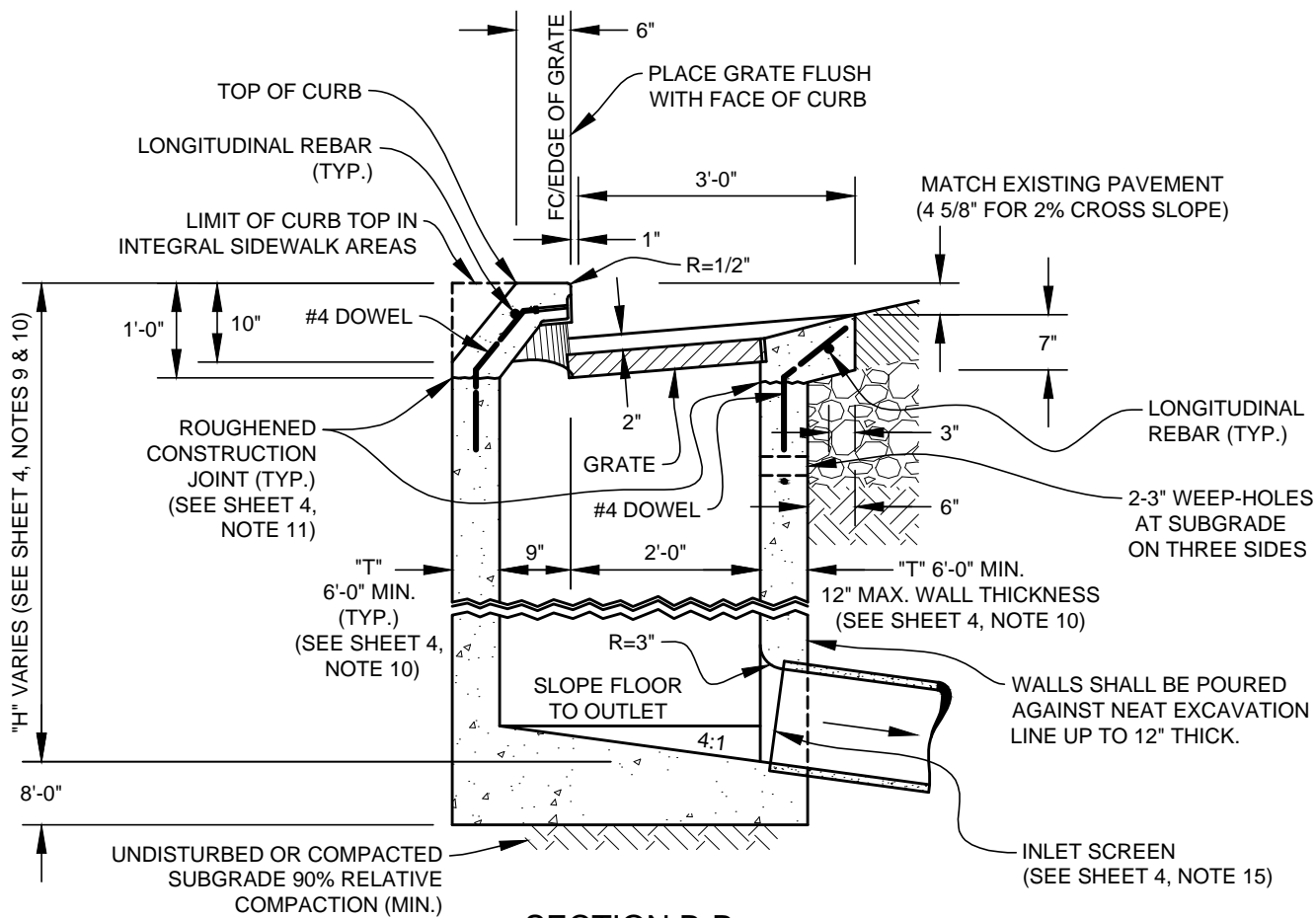
**CITY OF FREMONT**  
**STANDARD DETAILS**  
**STORM DRAIN INLET**  
**CURB INLET**

DATE APPROVED BY CITY COUNCIL 4/11/2006
RESOLUTION NO. 2006-31
CITY ENGINEER <i>Norm Hoyle</i>

FILE NO. SD-22-22.DWG	SCALE NOT TO SCALE	DRAWN DC	CHECKED KC	DATE 3/14/2006	DWG NO. SD-22	1 OF 4
--------------------------	-----------------------	-------------	---------------	-------------------	------------------	--------



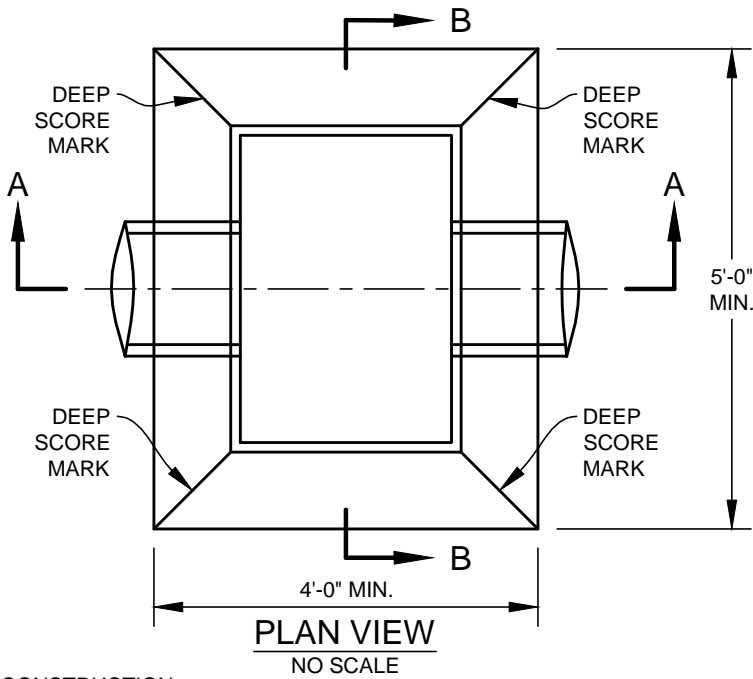
**POSITION OF FRAME AND GRATE FOR CURB GRADES 5% OR STEEPER**  
NO SCALE



**SECTION B-B**  
NO SCALE

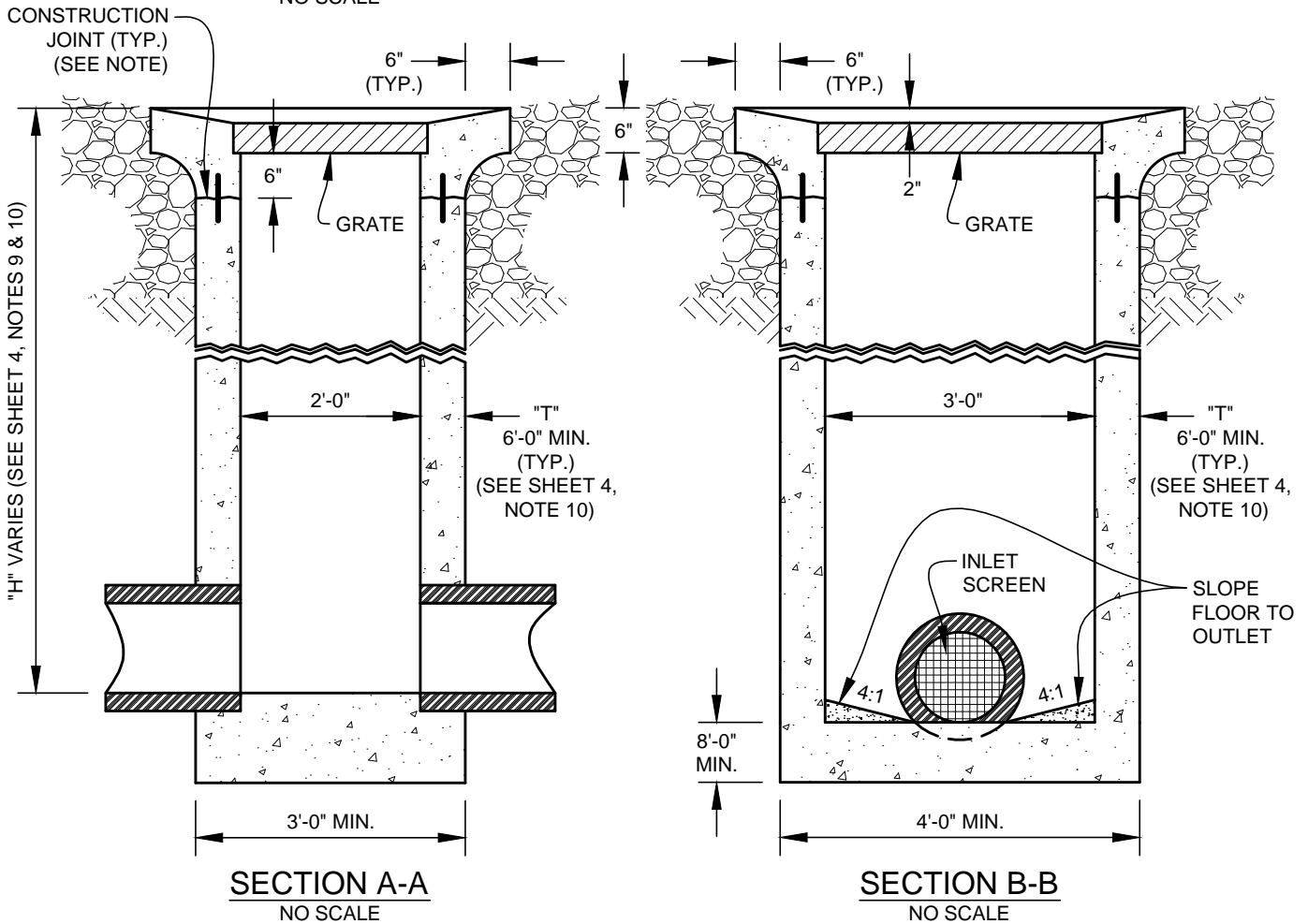
NOTE: FOR REINFORCING REQUIREMENTS SEE SHEET 4, NOTE 9.

APPR	REVISION	DATE	<b>CITY OF FREMONT</b> <b>STANDARD DETAILS</b> <b>STORM DRAIN INLET</b> <b>CURB INLET</b>			DATE APPROVED BY CITY COUNCIL	
<i>MW</i>	MISC REVISIONS	6/09				4/11/2006	
<i>KB</i>	GENERAL REVISION	7/22				RESOLUTION NO.	
						2006-31	
			CITY ENGINEER			<i>Tom Hoyle</i>	
FILE NO.	SCALE	DRAWN	CHECKED	DATE	DWG NO.		
SD-22-22.DWG	NOT TO SCALE	DC	KC	3/14/2006	SD-22	2 OF 4	



**NOTES:**

1. CAST-IN-PLACE ONLY.
2. FOR GRATE AND FRAME, SEE SHEET 4, NOTE 3.
3. FOR REINFORCING AND WALL THICKNESS, SEE SHEET 4, NOTES 9 & 10.
4. FOR INLET SCREEN, SEE NOTE 15 ON SHEET 4.



APPR	REVISION	DATE
<i>MH</i>	MISC REVISIONS	6/09
<i>KB</i>	GENERAL REVISION	7/22

**CITY OF FREMONT**  
**STANDARD DETAILS**  
**STORM DRAIN INLET**  
**FIELD INLET**

DATE APPROVED BY CITY COUNCIL 4/11/2006
RESOLUTION NO. 2006-31
CITY ENGINEER <i>Tom Hoyle</i>

FILE NO. SD-22-22.DWG	SCALE NOT TO SCALE	DRAWN DC	CHECKED KC	DATE 3/14/2006	DWG NO. SD-22	3 OF 4
--------------------------	-----------------------	-------------	---------------	-------------------	------------------	--------

## STORM DRAIN INLET NOTES

1. ALL INLETS TO BE CAST-IN-PLACE ONLY.
2. ALL METAL SHALL BE STRUCTURAL GRADE STEEL OR BETTER AND SHALL BE GALVANIZED AFTER FABRICATION. AFTER INSTALLATION ABRADED SURFACES SHALL BE CLEANED FREE OF RUST AND OIL AND NEATLY SOLDERED OVER WITH 50-50 SOLDER.
3. GRATING AND FRAMES ARE TO BE ASSEMBLED AND MADE TO FIT BEFORE DELIVERY TO JOB SITE. THE REQUIRED GRATE IS TYPE 24-13 AS DESIGNATED BY CAL TRANS STANDARD DETAIL 77B. GRATES SHALL BE BIKE FRIENDLY AND GRATE OPENINGS SHALL BE PERPENDICULAR TO BIKE LANE AND TRAVEL PATH.
4. ALL CONCRETE SHALL BE 6-SACK CONCRETE, MAX 1" ROCK WITH 1-LB/CY OF LAMP BLACK.
5. TWO 3" WEEPHOLES TO BE PLACED ON THREE WALLS OF THE STORM DRAIN INLET AT THE STREET SUBGRADE ELEVATION (OR UNLESS OTHERWISE DIRECTED BY THE CITY ENGINEER), AS SHOWN ON PAGE 1 OF 4.
6. POSITION OF PIPE LEAVING INLET TO BE AS INDICATED ON THE PLANS AND INLET FLOOR TO SLOPE TO END OF PIPE. WHERE TWO OR MORE PIPES ENTER AN INLET, THE FLOOR SHALL HAVE A CHANNEL CONNECTING THE PIPE.
7. MINIMUM CLEAR SPACING BETWEEN SURFACES OF CONCRETE AND REINFORCING STEEL TO BE 2" EXCEPT 3" WHERE CONCRETE IS PLACED AGAINST EARTH.
8. NO CONSTRUCTION JOINTS TO BE PLACED OTHER THAN WHERE SHOWN ON THE PLANS, EXCEPT WITH APPROVAL OF THE CITY ENGINEER.
9. WALL REINFORCING NOT REQUIRED WHEN "H" = 8'-6" OR LESS AND THE UNSUPPORTED WIDTH OR LENGTH = 7' OR LESS. WALLS EXCEEDING THESE LIMITS SHALL BE REINFORCED WITH NO. 4 BARS @ 18" CENTERS PLACED 2" (SECTION A-A ON SHEET 1) CLEAR TO INSIDE OF BOX. A MINIMUM OF 3 VERTICAL BARS PER WALL SHALL BE INSTALLED. "H" IS DIFFERENCE IN ELEVATION BETWEEN OUTLET PIPE INVERT AND TOP OF CURB.
10. WALL THICKNESS "T" SHALL BE "T" = 6" MINIMUM FOR "H" TO 8'-6", "T" = 8" FOR "H" = 8'-7" TO 20'; T = 12" MAX IN ANY CASE.
11. CONSTRUCTION JOINTS AT SUBGRADE SHALL BE REINFORCED WITH TWO OR MORE, 24" LONG NO. 4 BARS, 6" MINIMUM EMBEDMENT.
12. INSTALL "NO DUMPING DRAINS TO BAY" DISC ON ALL DRAIN INLETS IN ACCORDANCE WITH THE CITY'S SPECIFICATIONS. THE DISC AND APPLICATION SPECIFICATIONS CAN BE PURCHASED FROM THE CITY'S ENVIRONMENTAL SERVICES DEPARTMENT.
13. ALL CURB INLET BOXES MUST BE POURED NEAT UNLESS OTHERWISE SPECIFIED BY THE CITY ENGINEER.
14. IN THE EVENT OF OVEREXCAVATION, CURB INLET OUTER WALL SHALL BE FORMED AND THE RESULTING VOID BETWEEN THE FORM AND EXCAVATION SHALL BE BACK-FILLED WITH CLASS II AB, COMPACTED TO 90%. THE RESULTING VOID SHALL BE A MINIMUM OF 12" WIDE TO FACILITATE PROPER COMPACTION.
15. TRASH CAPTURE INLET SCREENS ARE TO BE INSTALLED AS SHOWN ON THE PLANS. THE APPROVED TRASH CAPTURE INLET SCREEN IS MODEL USW-1-M MANUFACTURED AND INSTALLED BY UNITED STORMWATER, INC. 14000 E. VALLEY BLVD, CITY OF INDUSTRY, CA 91746. [www.unitedstormwater.com](http://www.unitedstormwater.com)

APPR	REVISION	DATE	<b>CITY OF FREMONT</b> <b>STANDARD DETAILS</b> <b>STORM DRAIN INLET</b> <b>NOTES</b>			DATE APPROVED BY CITY COUNCIL	
<i>MW</i>	MISC REVISIONS	6/09				4/11/2006	
<i>KB</i>	GENERAL REVISION	7/22				RESOLUTION NO.	
						2006-31	
						CITY ENGINEER	
						<i>Tom Hoyle</i>	
FILE NO.	SCALE	DRAWN	CHECKED	DATE	DWG NO.		
SD-22-22.DWG	NOT TO SCALE	DC	KC	3/14/2006	SD-22	4 OF 4	