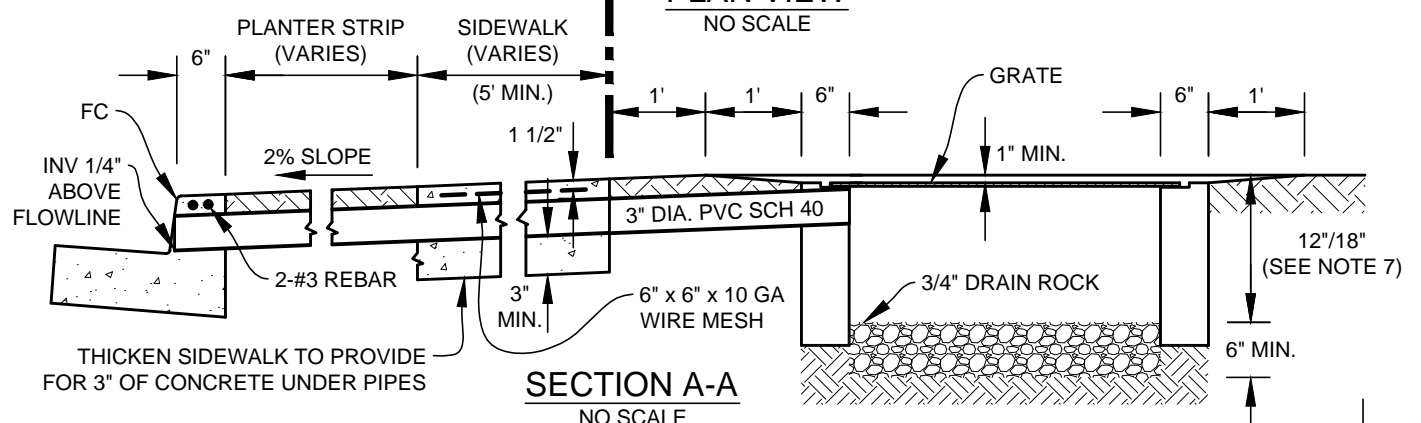
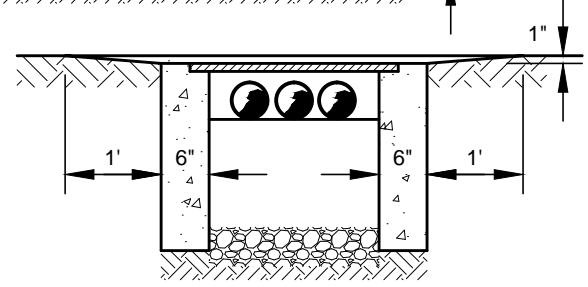


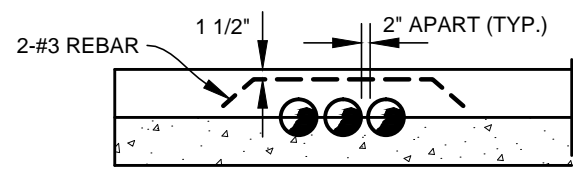
**PLAN VIEW**  
NO SCALE



**SECTION A-A**  
NO SCALE



**SECTION B-B**  
NO SCALE



**SECTION C-C**  
NO SCALE

**NOTES:**

1. THRU CURB DRAIN CAN ONLY BE INSTALLED WITH CITY ENGINEER APPROVAL.
2. INLET GRATE AND FRAME SHALL BE OF SIZE, TYPE AND TRAFFIC LOADING AS SHOWN ON THE PLANS.
3. AN ENCROACHMENT PERMIT IS REQUIRED FOR WORK IN THE PUBLIC RIGHT OF WAY.
4. THE NUMBER OF PIPES DISCHARGING THRU THE CURB SHALL BE AS SHOWN ON THE PLANS.
5. INLET GRATE & FRAME SHALL BE LOCATED IN LANDSCAPE AREAS TO THE MAXIMUM EXTENT PRACTICABLE.
6. SIDWALK SHALL HAVE 9" THICKENED SECTION.
7. FRAME SHALL BE MIN 18" DEEP TO ALLOW PIPED FLOWS FROM ROOF LEADERS.

APPR	REVISION	DATE	<b>CITY OF FREMONT</b> STANDARD DETAILS <b>THRU CURB DRAIN</b> COMMERCIAL / INDUSTRIAL HILLSIDE RESIDENTIAL			DATE APPROVED BY CITY COUNCIL	
<i>LB</i>	GENERAL REVISION	7/22				4/11/2006	
						RESOLUTION NO.	
						2006-31	
			CITY ENGINEER			<i>Tom Hoyle</i>	
FILE NO.	SCALE	DRAWN	CHECKED	DATE	DWG NO.	1 OF 1	
SD-33-22.DWG	NOT TO SCALE	DC	KC	3/14/2006	SD-33		