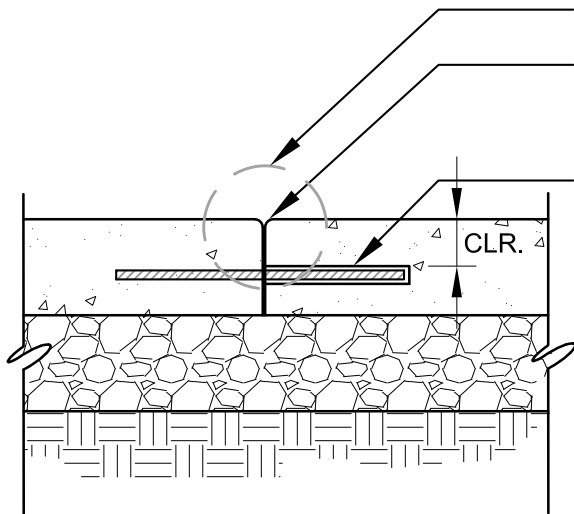


DEEP JOINT (REFER TO PLAN FOR LOCATION)
1/4" R TOOLED EDGE, TYP. DEPTH OF JOINT TO
BE 1/4 OF SLAB THICKNESS

DEEP JOINT

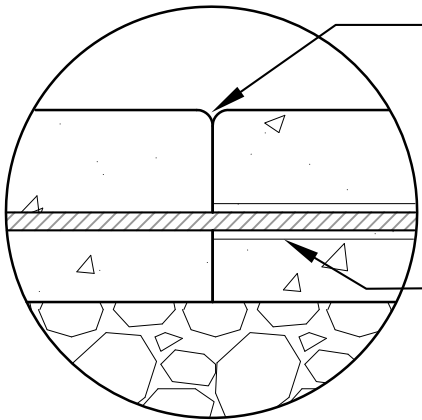


SEE ENLARGEMENTS BELOW

COLD JOINT W/ 1/4" R TOOLED EDGE, TYP.
INSTALL WHERE SHOWN ON PLANS OR WHERE
CONCRETE PAVING MEETS VERTICAL SURFACE

12" LONG #4 BAR (DEFORMED) @ 24" O.C. MAXIMUM
WRAP ONE END IN FELT AND EPOXY GROUT OTHER
END INTO EXISTING CONCRETE. DOWEL SHALL BE
2" CLEAR FOR 4" THICK EXISTING CONCRETE, AND
3" CLEAR FOR 6" THICK EXISTING CONCRETE.

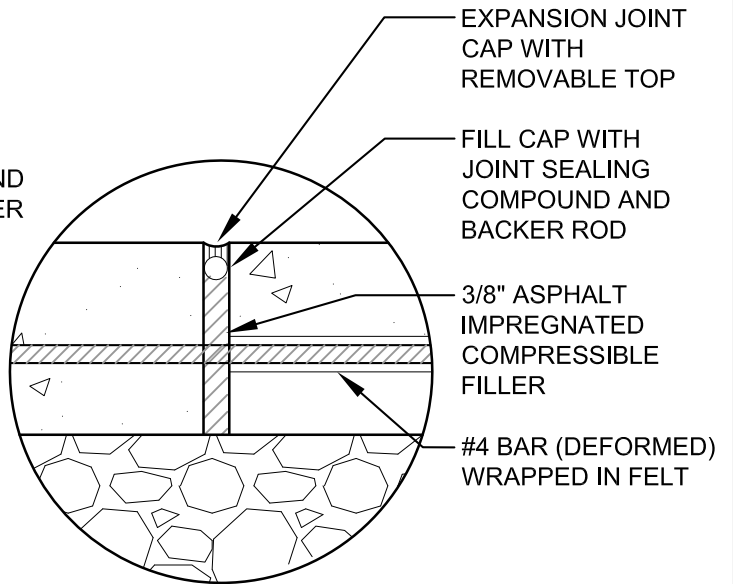
COLD OR EXPANSION JOINT



JOINT SEALING COMPOUND
AND BACKER ROD. BACKER
ROD SHALL BE
INCORPORATED INTO
LATER POUR TO
PREVENT WATER
INTRUSION

#4 BAR (DEFORMED)
WRAPPED IN FELT

COLD JOINT DETAIL ENLARGEMENT
SCALE: 1/2" = 1'-0"



EXPANSION JOINT
CAP WITH
REMOVABLE TOP

FILL CAP WITH
JOINT SEALING
COMPOUND AND
BACKER ROD

3/8" ASPHALT
IMPREGNATED
COMPRESSIBLE
FILLER

#4 BAR (DEFORMED)
WRAPPED IN FELT

EXPANSION JOINT DETAIL ENLARGEMENT
SCALE: 1/2" = 1'-0"

CITY OF FREMONT

PARK STANDARD DETAILS

CONCRETE JOINTS

DATE APPROVED BY CITY COUNCIL
December 13, 2011

RESOLUTION NO. 2011-65

SENIOR LANDSCAPE ARCHITECT

COMMUNITY SERVICES DIRECTOR

APR.	REVISED	DATE
REVISIONS		

FILE NO. PSD CONC-4.DWG	SCALE AS SHOWN	DRAWN MAM/TB	CHECKED RER	DATE 05/03/2011	DWG NO. PSD CONC-4	1 OF 1
----------------------------	-------------------	-----------------	----------------	--------------------	-----------------------	--------