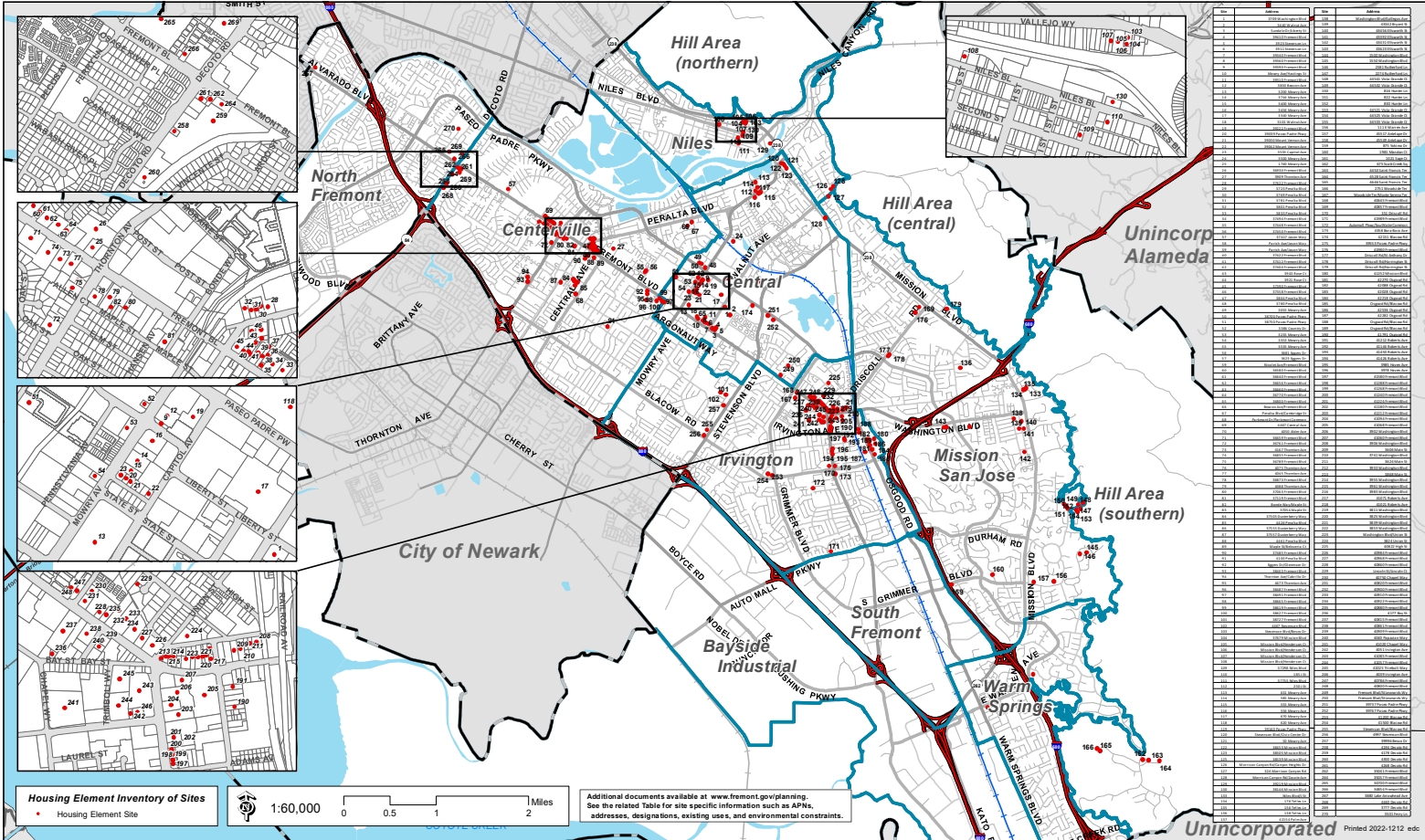


Housing Element 2023 - 2031 Inventory of Sites

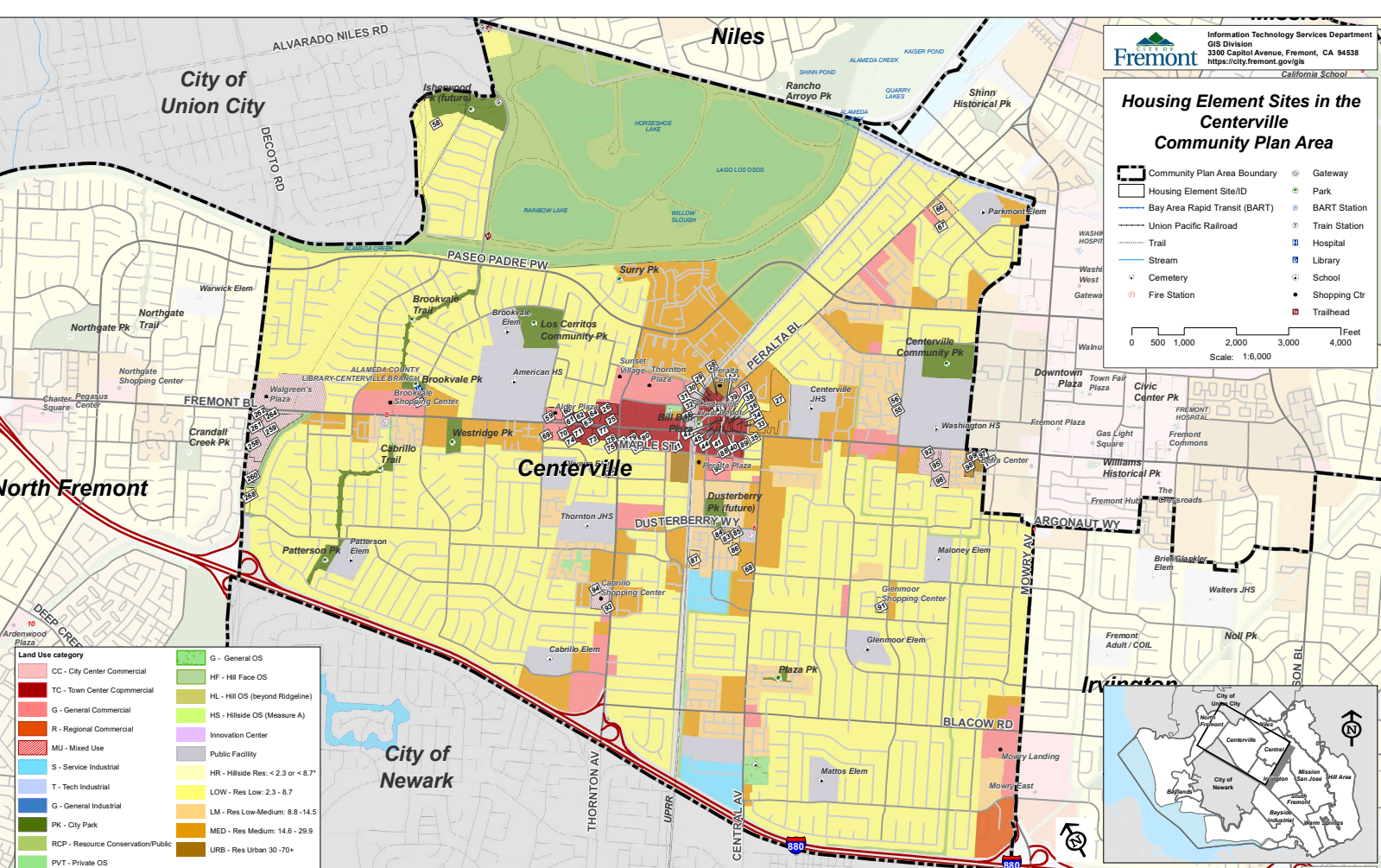
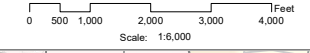


Site ID	Address	APNs	Designation	Existing Use	Environmental Constraints
101	101 N.
102	102 N.
103	103 N.
104	104 N.
105	105 N.
106	106 N.
107	107 N.
108	108 N.
109	109 N.
110	110 N.
111	111 N.
112	112 N.
113	113 N.
114	114 N.
115	115 N.
116	116 N.
117	117 N.
118	118 N.
119	119 N.
120	120 N.
121	121 N.
122	122 N.
123	123 N.
124	124 N.
125	125 N.
126	126 N.
127	127 N.
128	128 N.
129	129 N.
130	130 N.
131	131 N.
132	132 N.
133	133 N.
134	134 N.
135	135 N.
136	136 N.
137	137 N.
138	138 N.
139	139 N.
140	140 N.
141	141 N.
142	142 N.
143	143 N.
144	144 N.
145	145 N.
146	146 N.
147	147 N.
148	148 N.
149	149 N.
150	150 N.
151	151 N.
152	152 N.
153	153 N.
154	154 N.
155	155 N.
156	156 N.
157	157 N.
158	158 N.
159	159 N.
160	160 N.
161	161 N.
162	162 N.
163	163 N.
164	164 N.
165	165 N.
166	166 N.
167	167 N.
168	168 N.
169	169 N.
170	170 N.
171	171 N.
172	172 N.
173	173 N.
174	174 N.
175	175 N.
176	176 N.
177	177 N.
178	178 N.
179	179 N.
180	180 N.
181	181 N.
182	182 N.
183	183 N.
184	184 N.
185	185 N.
186	186 N.
187	187 N.
188	188 N.
189	189 N.
190	190 N.
191	191 N.
192	192 N.
193	193 N.
194	194 N.
195	195 N.
196	196 N.
197	197 N.
198	198 N.
199	199 N.
200	200 N.

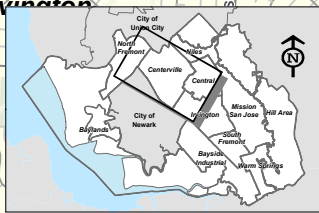
Additional documents available at www.fremont.gov/planning.
See the related Table for site specific information such as APNs,
addresses, designations, existing uses, and environmental constraints.

Housing Element Sites in the Centerville Community Plan Area

- Community Plan Area Boundary
- Housing Element Site/ID
- Bay Area Rapid Transit (BART)
- Union Pacific Railroad
- Trail
- Stream
- Cemetery
- Fire Station
- Gateway
- Park
- BART Station
- Train Station
- Hospital
- Library
- School
- Shopping Ctr
- Trailhead

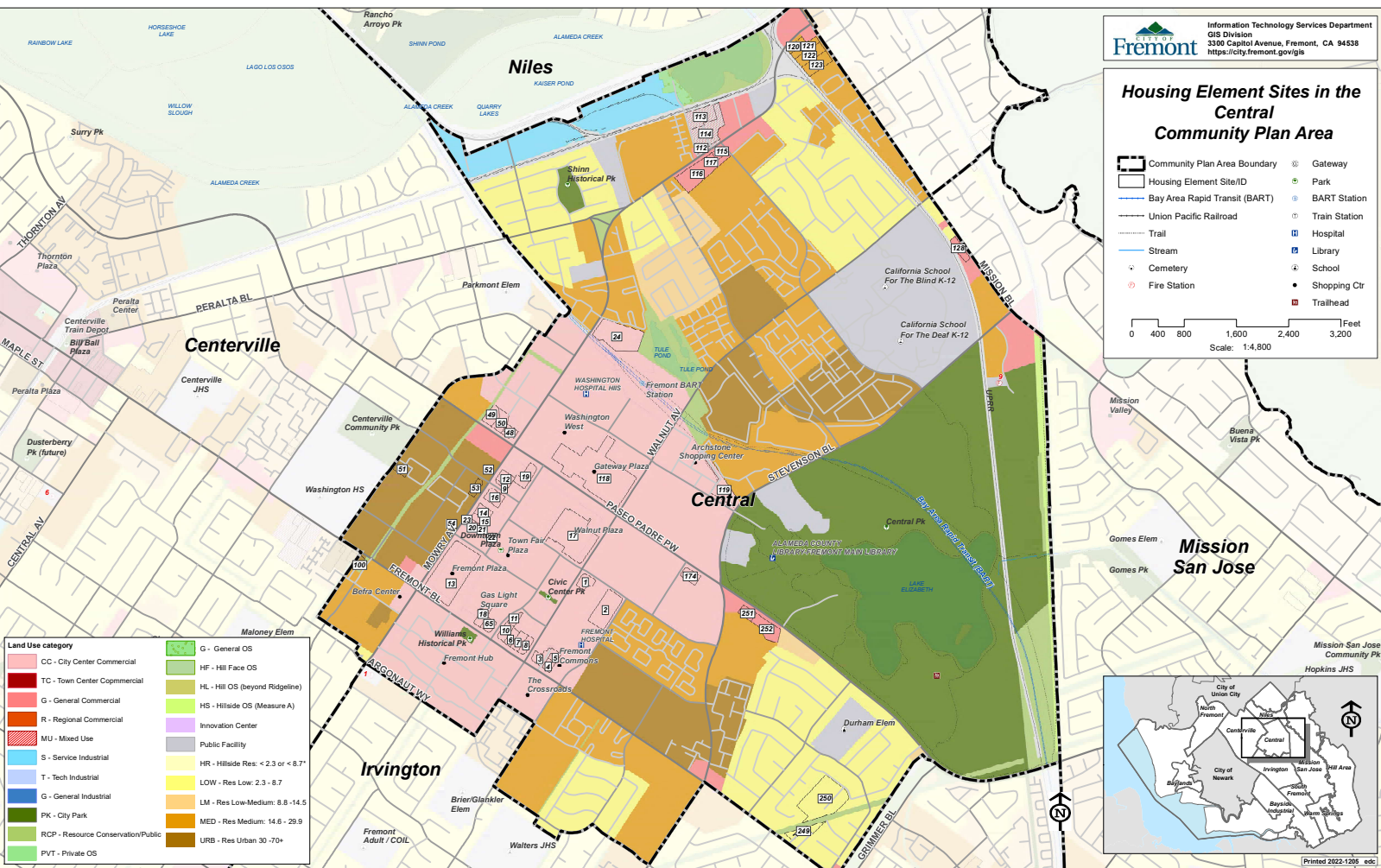


Land Use category	
CC - City Center Commercial	G - General OS
TC - Town Center Commercial	HF - Hill Face OS
G - General Commercial	HL - Hill OS (beyond Ridgeline)
R - Regional Commercial	HS - Hillside OS (Measure A)
MU - Mixed Use	Innovation Center
S - Service Industrial	Public Facility
T - Tech Industrial	HR - Hillside Res: <2.3 or <8.7'
G - General Industrial	LOW - Res Low: 2.3 - 8.7
PK - City Park	LM - Res Low-Medium: 8.8 - 14.5
RCP - Resource Conservation/Public	MED - Res Medium: 14.6 - 29.9
PVT - Private OS	URB - Res Urban 30 - 70+

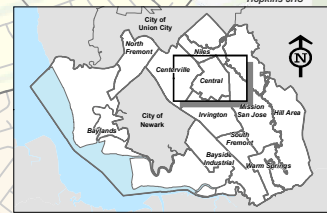


Housing Element Sites in the Central Community Plan Area

- Community Plan Area Boundary
- Housing Element Site/ID
- Bay Area Rapid Transit (BART)
- Union Pacific Railroad
- Trail
- Stream
- Cemetery
- Fire Station
- Gateway
- Park
- BART Station
- Train Station
- Hospital
- Library
- School
- Shopping Ctr
- Trailhead



Land Use category	
	CC - City Center Commercial
	TC - Town Center Commercial
	G - General Commercial
	R - Regional Commercial
	MU - Mixed Use
	S - Service Industrial
	T - Tech Industrial
	G - General Industrial
	PK - City Park
	RCP - Resource Conservation/Public
	PVT - Private OS
	G - General OS
	HF - Hill Face OS
	HL - Hill OS (beyond Ridgeline)
	HS - Hillside OS (Measure A)
	Innovation Center
	Public Facility
	HR - Hillside Res: <2.3 or <8.7'
	LOW - Res Low: 2.3 - 8.7'
	LM - Res Low-Medium: 8.8 - 14.5'
	MED - Res Medium: 14.6 - 29.9'
	URB - Res Urban 30' - 70'



Housing Element Sites in the Hill Area (southern) Community Plan Area

Legend:

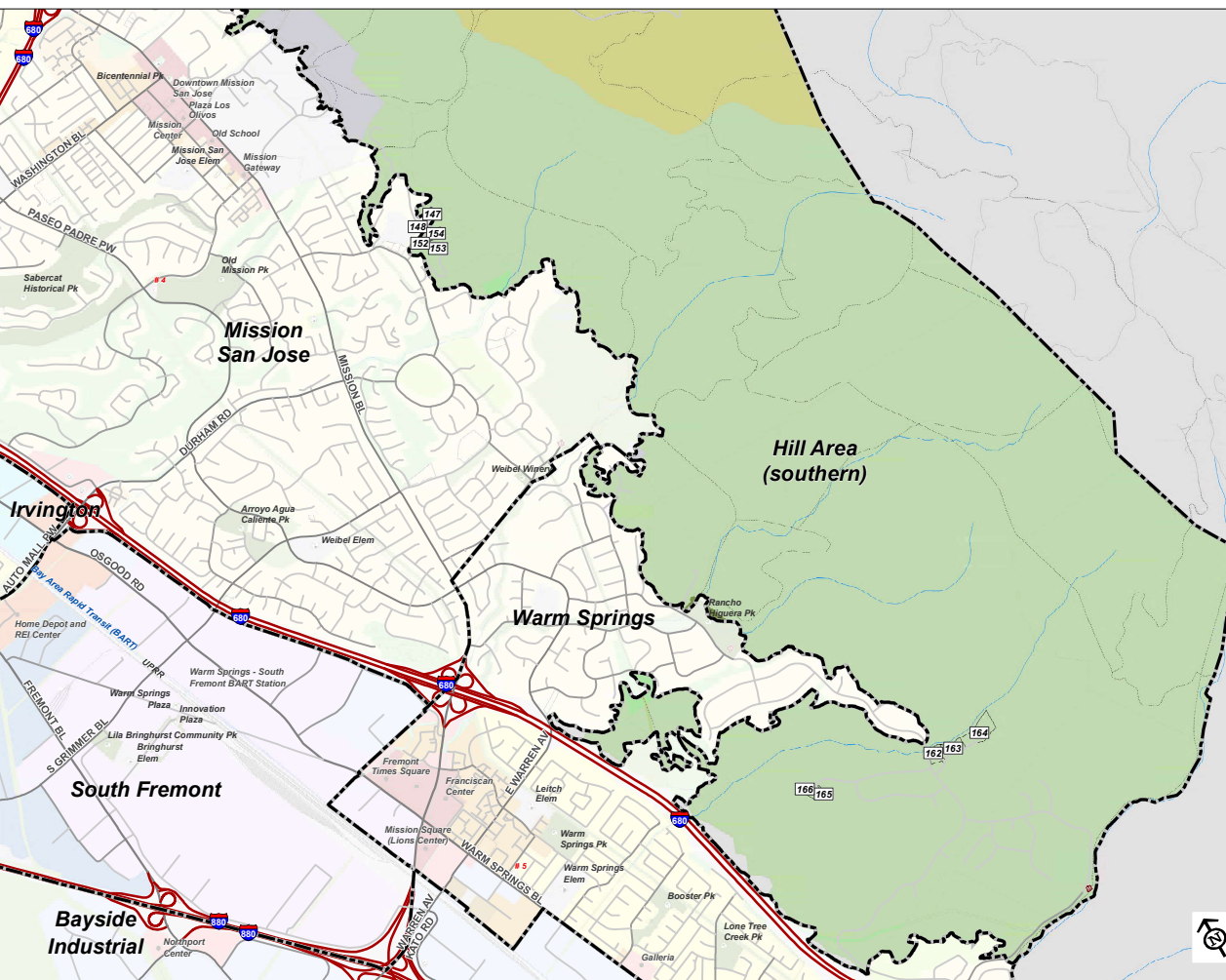
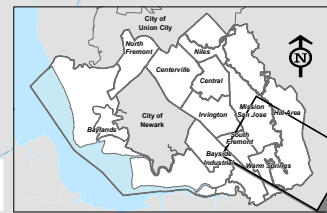
- Community Plan Area Boundary
- Housing Element Site/ID
- Bay Area Rapid Transit (BART)
- Union Pacific Railroad
- Trail
- Stream
- Cemetery
- Fire Station
- Gateway
- Park
- BART Station
- Train Station
- Hospital
- Library
- School
- Shopping Ctr
- Trailhead

Scale: 1:7,200

0 600 1,200 2,400 3,600 4,800 Feet

Land Use category

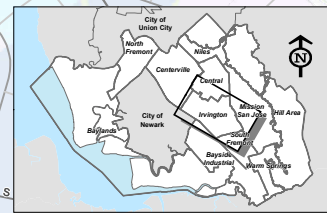
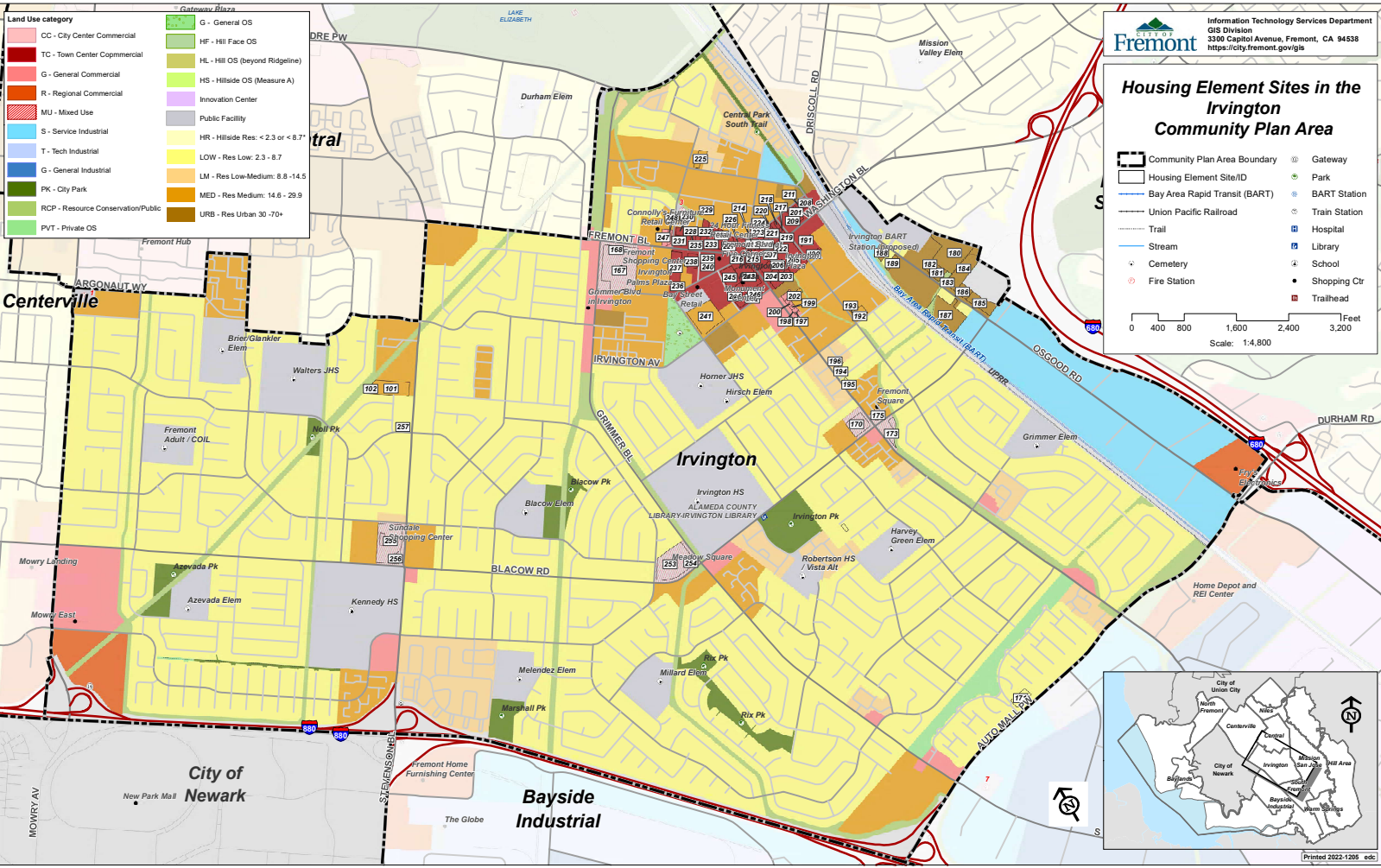
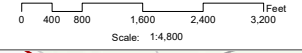
CC - City Center Commercial	G - General OS
TC - Town Center Commercial	HF - Hill Face OS
G - General Commercial	HL - Hill OS (beyond Ridgeline)
R - Regional Commercial	HS - Hillside OS (Measure A)
MU - Mixed Use	Innovation Center
S - Service Industrial	Public Facility
T - Tech Industrial	HR - Hillside Res: <2.3 or < 8.7'
G - General Industrial	LOW - Res Low: 2.3 - 8.7'
PK - City Park	LM - Res Low-Medium: 8.8 - 14.5'
RCP - Resource Conservation Public	MED - Res Medium: 14.6 - 29.9'
PVT - Private OS	URB - Res Urban 30 - 70+



Land Use category	
	CC - City Center Commercial
	TC - Town Center Commercial
	G - General Commercial
	R - Regional Commercial
	MU - Mixed Use
	S - Service Industrial
	T - Tech Industrial
	G - General Industrial
	PK - City Park
	RCP - Resource Conservation/Public
	PVT - Private OS
	G - General OS
	HF - Hill Face OS
	HL - Hill OS (beyond Ridgeline)
	HS - Hillside OS (Measure A)
	Innovation Center
	Public Facility
	HR - Hillside Res: <2.3 or <8.7
	LOW - Res Low: 2.3 - 8.7
	LM - Res Low-Medium: 8.8 - 14.5
	MED - Res Medium: 14.6 - 29.9
	URB - Res Urban 30 - 70+

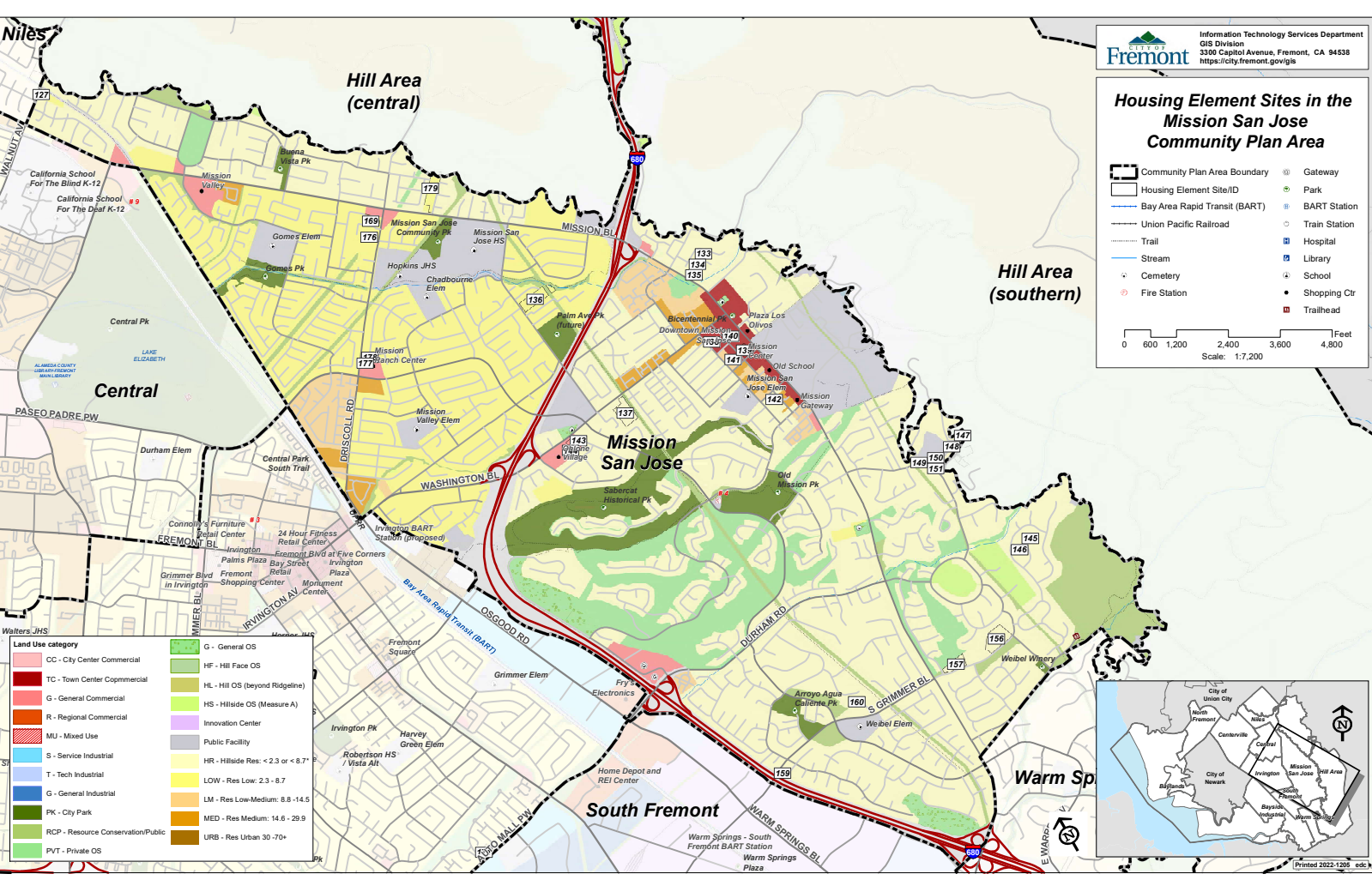
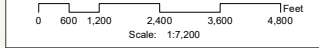
Housing Element Sites in the Irvington Community Plan Area

- Community Plan Area Boundary
- Housing Element Site/ID
- Bay Area Rapid Transit (BART)
- Union Pacific Railroad
- Trail
- Stream
- Cemetery
- Fire Station
- Gateway
- Park
- BART Station
- Train Station
- Hospital
- Library
- School
- Shopping Ctr
- Trailhead



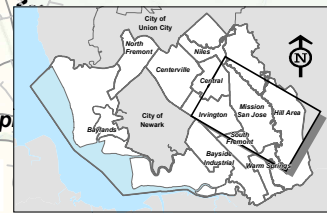
Housing Element Sites in the Mission San Jose Community Plan Area

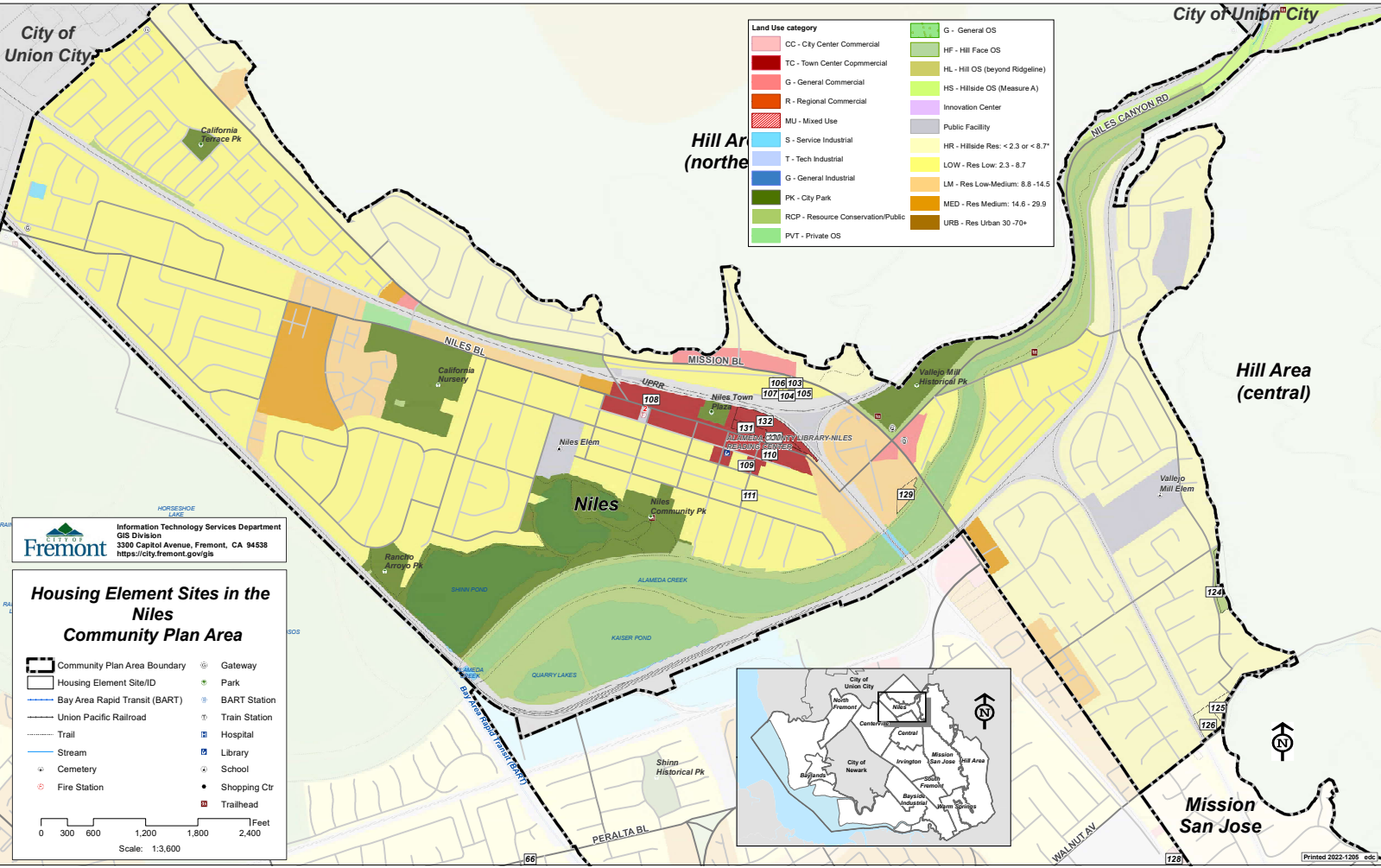
- Community Plan Area Boundary
- Housing Element Site/ID
- Bay Area Rapid Transit (BART)
- Union Pacific Railroad
- Trail
- Stream
- Cemetery
- Fire Station
- Gateway
- Park
- BART Station
- Train Station
- Hospital
- Library
- School
- Shopping Ctr
- Trailhead



Walters JHS

Land Use category	Color
CC - City Center Commercial	Light Pink
TC - Town Center Commercial	Dark Red
G - General Commercial	Orange
R - Regional Commercial	Red-Orange
MU - Mixed Use	Light Orange
S - Service Industrial	Light Blue
T - Tech Industrial	Blue
G - General Industrial	Dark Blue
PK - City Park	Light Green
RCP - Resource Conservation/Public	Green
PVT - Private OS	Light Green
G - General OS	Light Green
HF - Hill Face OS	Light Green
HL - Hill OS (beyond Ridgeline)	Light Green
HS - Hillside OS (Measure A)	Light Green
Innovation Center	Purple
Public Facility	Grey
HR - Hillside Res. < 2.3 or < 8.7'	Yellow
LOW - Res Low: 2.3 - 8.7	Light Yellow
LM - Res Low-Medium: 8.8 - 14.5	Orange
MED - Res Medium: 14.6 - 29.9	Dark Orange
URB - Res Urban 30'-70'+	Dark Orange



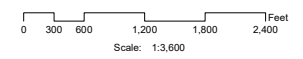


Land Use category	
CC - City Center Commercial	G - General OS
TC - Town Center Commercial	HF - Hill Face OS
G - General Commercial	HL - Hill OS (beyond Ridgeline)
R - Regional Commercial	HS - Hillside OS (Measure A)
MU - Mixed Use	Innovation Center
S - Service Industrial	Public Facility
T - Tech Industrial	HR - Hillside Res: < 2.3 or < 8.7"
G - General Industrial	LOW - Res Low: 2.3 - 8.7
PK - City Park	LM - Res Low-Medium: 8.8 - 14.5
RCP - Resource Conservation/Public	MED - Res Medium: 14.6 - 29.9
PVT - Private OS	URB - Res Urban 30 - 70+

Information Technology Services Department
 GIS Division
 3300 Capitol Avenue, Fremont, CA 94538
<https://city.fremont.gov/gis>

Housing Element Sites in the Niles Community Plan Area

- Community Plan Area Boundary
- Housing Element Site/ID
- Bay Area Rapid Transit (BART)
- Union Pacific Railroad
- Trail
- Stream
- Cemetery
- Fire Station
- Gateway
- Park
- BART Station
- Train Station
- Hospital
- Library
- School
- Shopping Ctr
- Trailhead

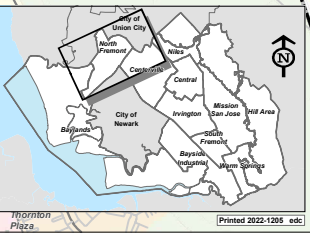
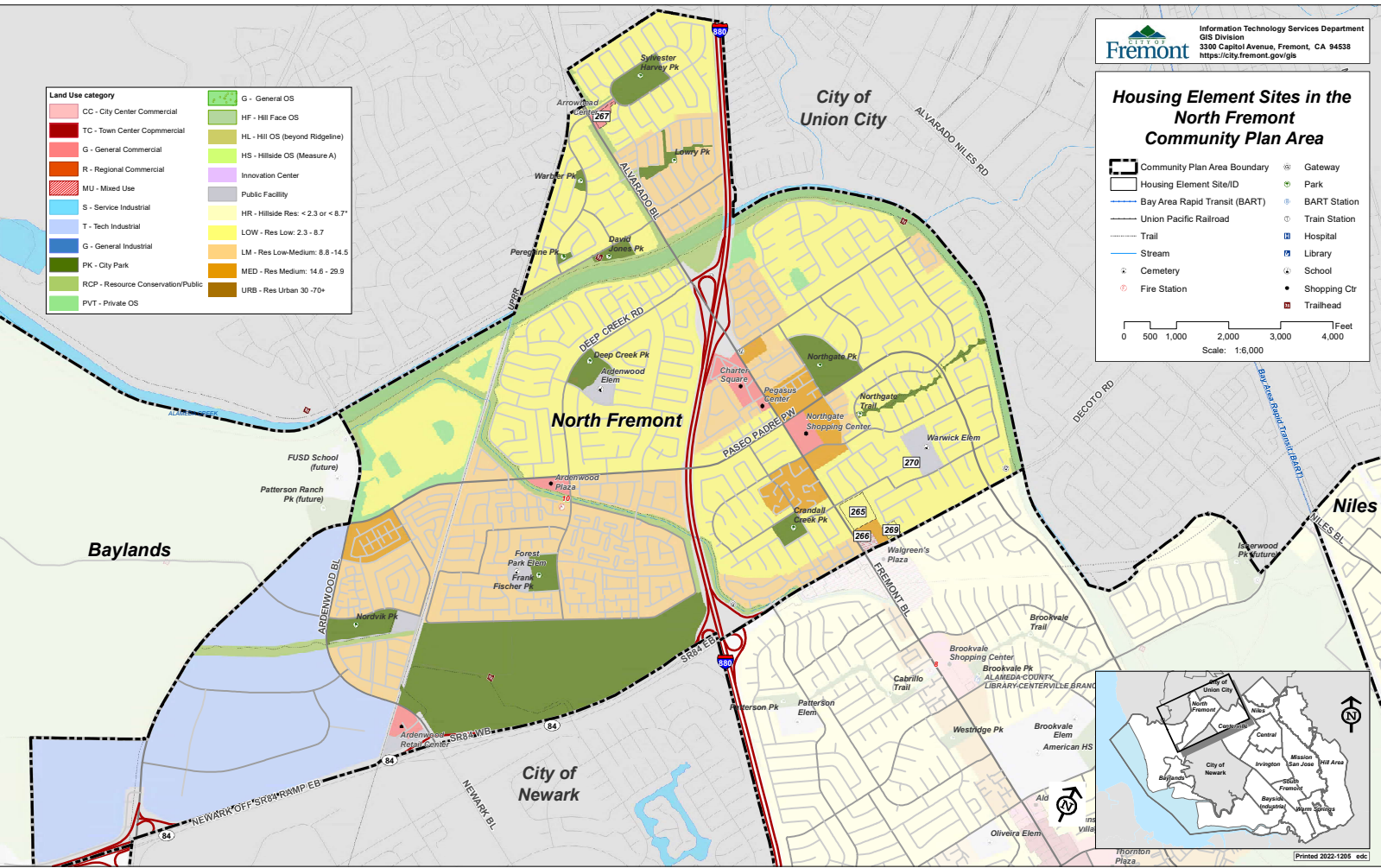


Housing Element Sites in the North Fremont Community Plan Area






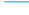



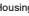
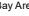
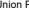

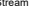
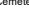


Community Plan Area Boundary	Gateway
Housing Element Site/ID	Park
Bay Area Rapid Transit (BART)	BART Station
Union Pacific Railroad	Train Station
Trail	Hospital
Stream	Library
Cemetery	School
Fire Station	Shopping Ctr
	Trailhead

0 500 1,000 2,000 3,000 4,000 Feet
 Scale: 1:6,000

Land Use category	
CC - City Center Commercial	G - General OS
TC - Town Center Commercial	HF - Hill Face OS
G - General Commercial	HL - Hill OS (beyond Ridgeline)
R - Regional Commercial	HS - Hillside OS (Measure A)
MU - Mixed Use	Innovation Center
S - Service Industrial	Public Facility
T - Tech Industrial	HR - Hillside Res: < 2.3 or < 8.7'
G - General Industrial	LOW - Res Low: 2.3 - 8.7
PK - City Park	LM - Res Low-Medium: 8.8-14.5
RCP - Resource Conservation/Public	MED - Res Medium: 14.6 - 29.9
PVT - Private OS	URS - Res Urban 30 - 70+




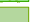



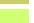





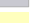

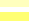








Housing Element Sites in the Warm Springs Community Plan Area

-  Community Plan Area Boundary
-  Housing Element Site/ID
-  Bay Area Rapid Transit (BART)
-  Union Pacific Railroad
-  Trail
-  Stream
-  Cemetery
-  Fire Station
-  Gateway
-  Park
-  BART Station
-  Train Station
-  Hospital
-  Library
-  School
-  Shopping Ctr
-  Trailhead



Hill Area (southern)

Land Use category			
	CC - City Center Commercial		G - General OS
	TC - Town Center Commercial		HF - Hill Face OS
	G - General Commercial		HL - Hill OS (beyond Ridgeline)
	R - Regional Commercial		HS - Hillside OS (Measure A)
	MU - Mixed Use		Innovation Center
	S - Service Industrial		Public Facility
	T - Tech Industrial		HR - Hillside Res: < 2.3 or < 8.7'
	G - General Industrial		LOW - Res Low: 2.3 - 8.7
	PK - City Park		LM - Res Low-Medium: 8.8 - 14.5
	RCP - Resource Conservation/Public		MED - Res Medium: 14.6 - 29.9
	PVT - Private OS		URB - Res Urban 30'-70'

