

# "Main Street"

Group 1

- Maintain width and/or # of vehicle travel lanes
- Provide dedicated bikeway (with buffers)
- Diagonal on-street parking (between Thornton & Central)
- Transit amenities
- HAWK at Bonde
- Greening

# Suburban

Group 1

- Landscape Median ??
- Enhance/widen bikeway
- Transit Amenities  
(in front of the high schools)
- Maintain the # of travel lanes (in front of the high schools & along the corridor)

Bike lockers

# Urban

Group 1

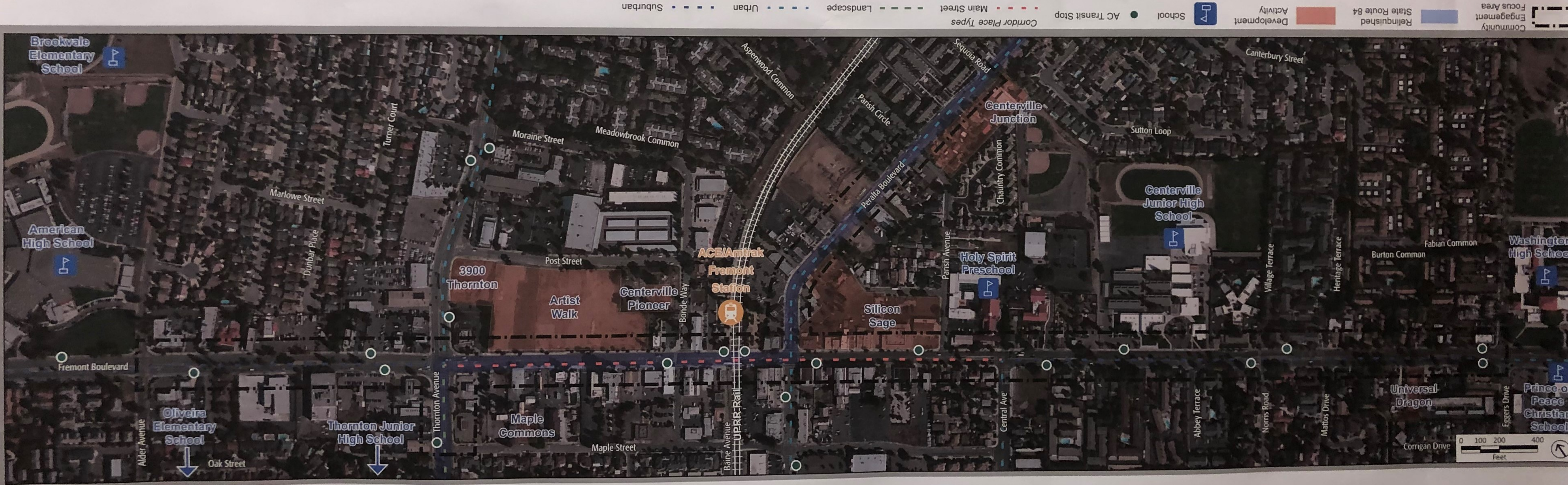
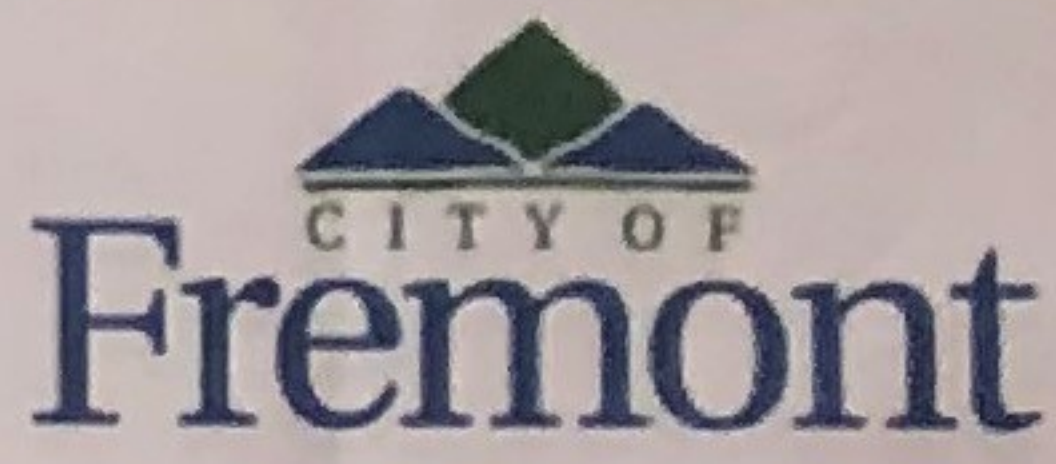
- Add sidewalks
- Provide dedicated bikeways
- Enhance bike lanes
- More greening

- 
- Stop light between Fremont & PPP
  - Bike lockers

# Landscape

- Maintain the # of travel lanes
- Enhance bike lanes
- More greening

# Centerville Complete Streets



Community Engagement Focus Area
 Relinquished State Route 84
  Development Activity
  School
  AC Transit Stop
  Main Street
  Landscape
  Urban
  Suburban

Community Engagement Focus Area
 Relinquished State Route 84
  Development Activity
  School
  AC Transit Stop
  Main Street
  Landscape
  Urban
  Suburban

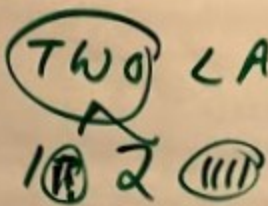
#1

Table 2 (1)  
MAIN ST - TOP 4 DISCUSSION

1. Xport - diagonal pkg.
2. beauty - add landscape
3. " - enhance greening
4. Xport - parallel pkg.

- 
- PARALLEL TAKES UP LESS SPACE (SAVE SPACE FOR OTHER PURPOSES)
  - HOWEVER, DIAGONAL CAN FIT MORE CARS BY BIZ
  - BIZ: IF PEOPLE CAN'T EASILY PK., THEY WON'T COME
  - FINITE SPACE - NEED LANES TO GET THERE

- Table 2
- NEED ADJOINING STS. TO SUPPORT TO NARROW MAIN ST.
  - NARROWING DISCOURAGES CUT-THROUGH
  - EXISTING SAFETY ISSUES DUE TO ↑ SPEED
  - HOW MUCH IS ACTUALLY CUT-THROUGH? (EVERYONE) IN STILL NEED TO GET TO LOCAL DESTINATIONS (SLOW OK, BUT NOT GRIDLOCK)
  - BIKE LANE HIGHEST PRI. ↳ DIAG PKG. WON'T LEAVE ENOUGH ROOM
  - BARRIER OF PKG. WILL PROTECT SIDEWALK USERS

- EX. SIDEWALKS TOO NARROW
- FOLLOW ARTIST WALK S/W WIDTHS FOR NEW STREETS.
- KEEP TWO LANES EACH WAY  

- BUS STOPPING STOPS TRAFFIC - CAN THEY PULL IN?
- COMPLETE MISSING S/Ws / FIX ROOT UPLIFT LOCATIONS  
 ↳ WHEEL CHAIRS CAN'T USE
- ADD A PKG. STRUCTURE  
 ↳ OFFREMONT BLVD  
 ↳ + surface lots OFF ST.

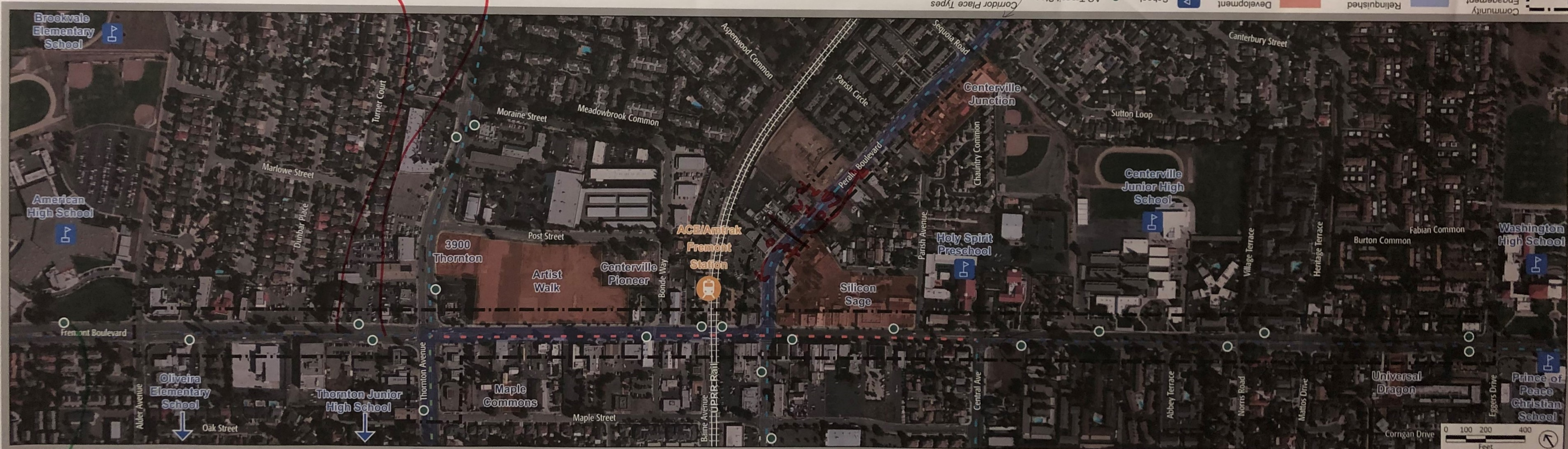


# Centerville Complete Streets

Report out systems:  
 - Fix sidewalks  
 - Narrow lanes/calculator traffic, but maintain current lane config.  
 - Keep parallel pkys, + enhance bike access  
 - improve school drop-off education + infrastructure

Legend:

- Community Engagement Focus Area (dashed box)
- Relinquished State Route 84 (blue box)
- Development Activity (red box)
- School (school icon)
- AC Transit Stop (green dot)
- Corridor Place Types: Main Street (dashed red line), Landscape (dashed green line), Urban (dashed black line), Suburban (dotted black line)



*Strengthen + remove roots*  
 Fix  
 Sidewalks  
 Bike lanes  
 Buffers

Keep 2 lanes  
 each way? (near Fremont Blvd, esp)

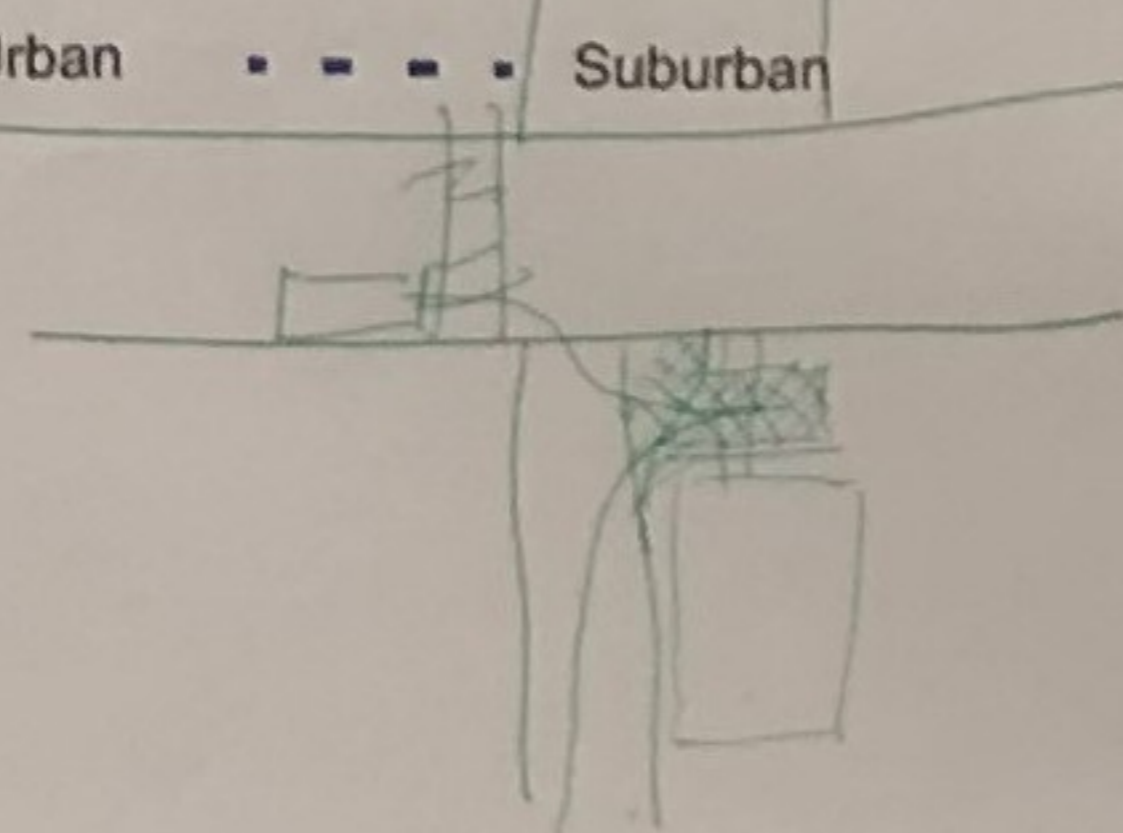
Legend:

- Community Engagement Focus Area (dashed box)
- Relinquished State Route 84 (blue box)
- Development Activity (red box)
- School (school icon)
- AC Transit Stop (green dot)
- Corridor Place Types: Main Street (dashed red line), Landscape (dashed green line), Urban (dashed black line), Suburban (dotted black line)

Turnout for bus. Educate students to stay out of st

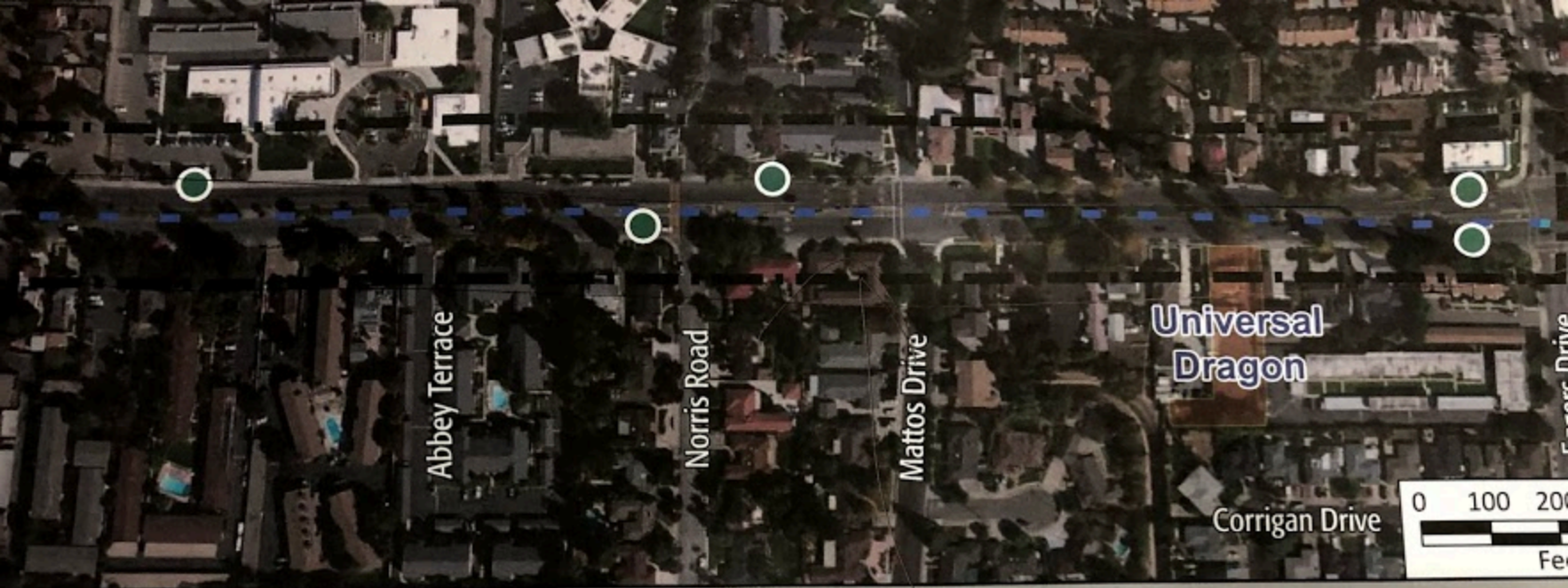
Thornton  
 Keep 2 lanes ea way  
 add buffered bike lanes

native  
 Keep 2 lanes ea way  
 narrow + add bike lane



0118  
 1/2/25

#2



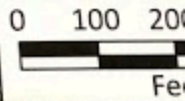
Abbey Terrace

Norris Road

Mattos Drive

Universal  
Dragon

Corrigan Drive



0110  
512745



or Place Types

- ■ Main Street
- — Landscape
- ■ Urban
- ■ Suburban

*main*  
Keep 2 lanes  
ea way  
Narrow & add  
bike lane





Community Engagement Focus Area



Relinquished State Route 84



Development Activity



School

*Thornton*

*Keep two lanes  
on way  
add buffered  
bike lanes*



AC Transit Stop

*Turnout for bus. Educate students to stay out of st parents*



*Fix Sidewalks*  
*Bufford Bike lanes*

*straighten + remove roots*

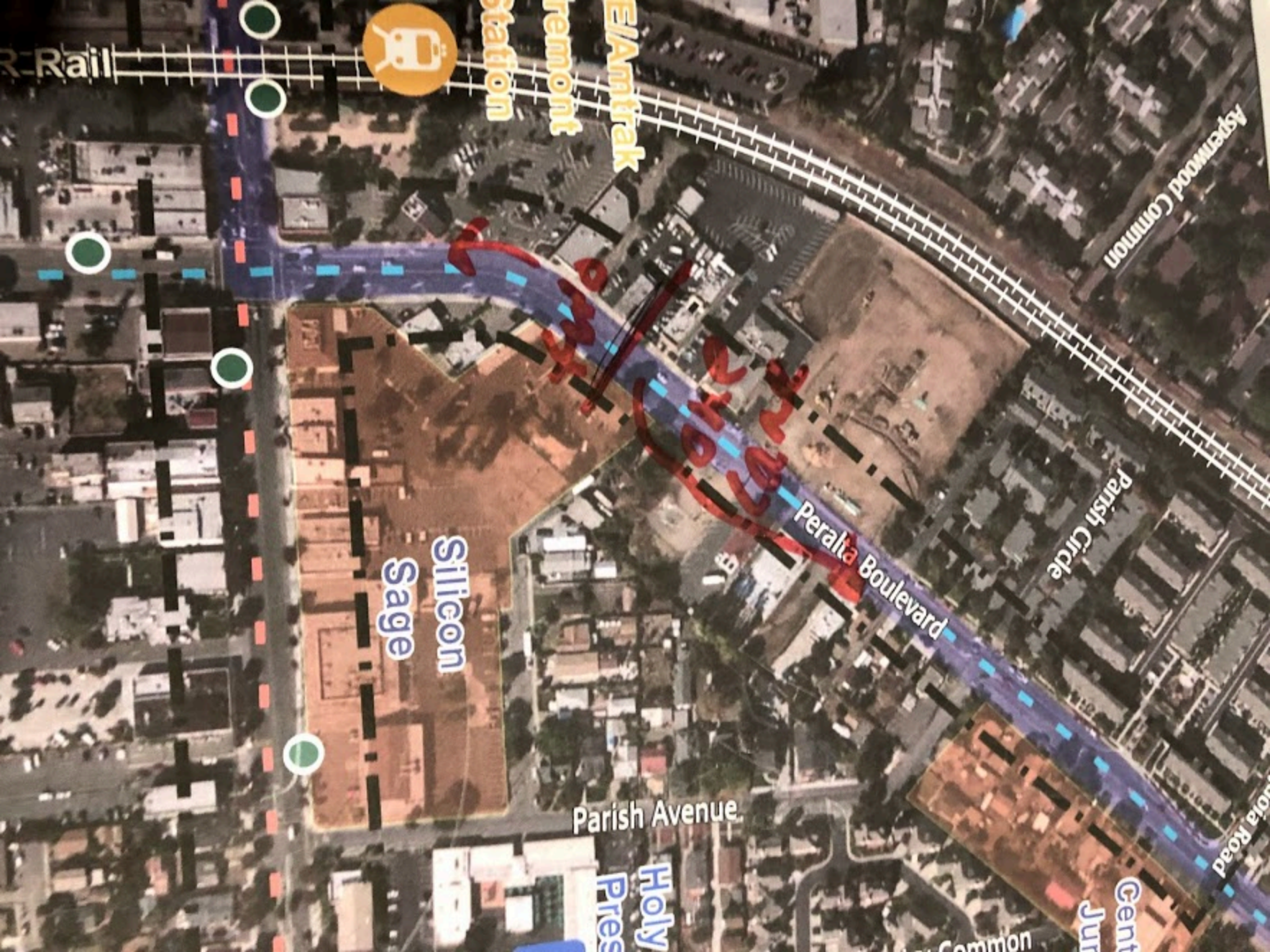
**Complete Streets**



Report out (4 items):

- Fix Sidewalks
- Narrow lanes/calm traffic, but maintain current lane config.
- keep <sup>road</sup> parallel pkz, & ~~and~~ enhance bike access
- improve school drop-off/pick-up infrastructure

keep 2 lanes  
each way? (near Fremont Blvd, esp)



BART Rail



Fremont Station  
BART/Amtrak

Aspinwood Common

Parish Circle

Peralta Boulevard

Silicon Sage

Parish Avenue

Holy Pres

Cent Jun

Common

Santa Rosa Road

"MAIN STREET"

3

Bikeways

Widen Sidewalks

(need to add bike racks/  
bike parking)

Gathering & Seating

Greening

Transit Amenities

Landscaped Median

\* No street parking at all!  
(for cars) can't have this  
w/wider sidewalks  
+  
Bikeways



"Suburban"

3

Bikeway

landscaped median

Transit Amenities

Diagonal on-street parking

Greening

Widen sidewalks  
(kids going to  
school)

"Urban"

3

Bikeway

Greening

Parallel parking

Diagonal parking

Landscaped median

Add sidewalks!!!

# "Landscape" 3

Widen sidewalks

Bikeway

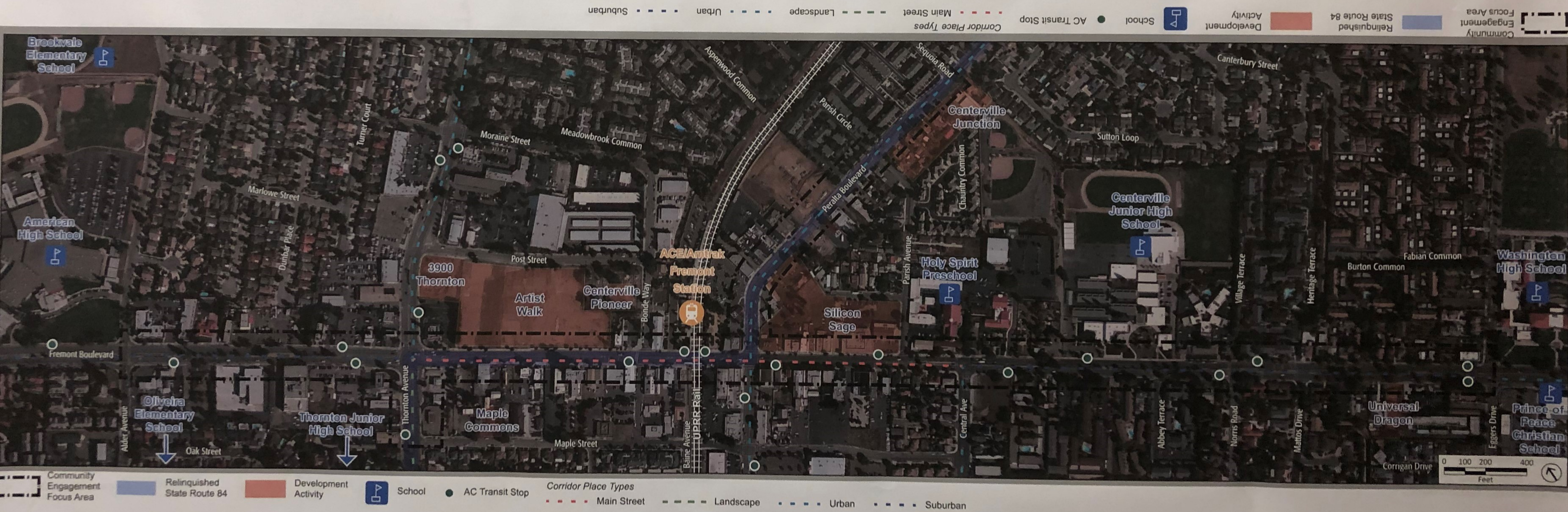
Greening

Landscaped Median

Transit Amenities

(This is a  
thoroughfare)

# Centerville Complete Streets



#3

# Main Street

#4

— Widened S/W

— Seating areas

— diagonal parking / bike lanes <sup>or</sup>

— landscaped medians / <sup>or</sup> greening of streets

<sup>or</sup> / Maintain # lanes

Other:

- Stop development

# Urban

---

#4

- Widened S/W
- enhanced bike lanes
- landscaped medians
- Street greening.

Others:

Stop development

MORE pocket parks

# Suburban

#4

- Widened s/w
- Enhanced bike lanes
- Gathering / seating spaces
- Landscaped medians

Others:

Stop development.

More pocket parks

# Landscape

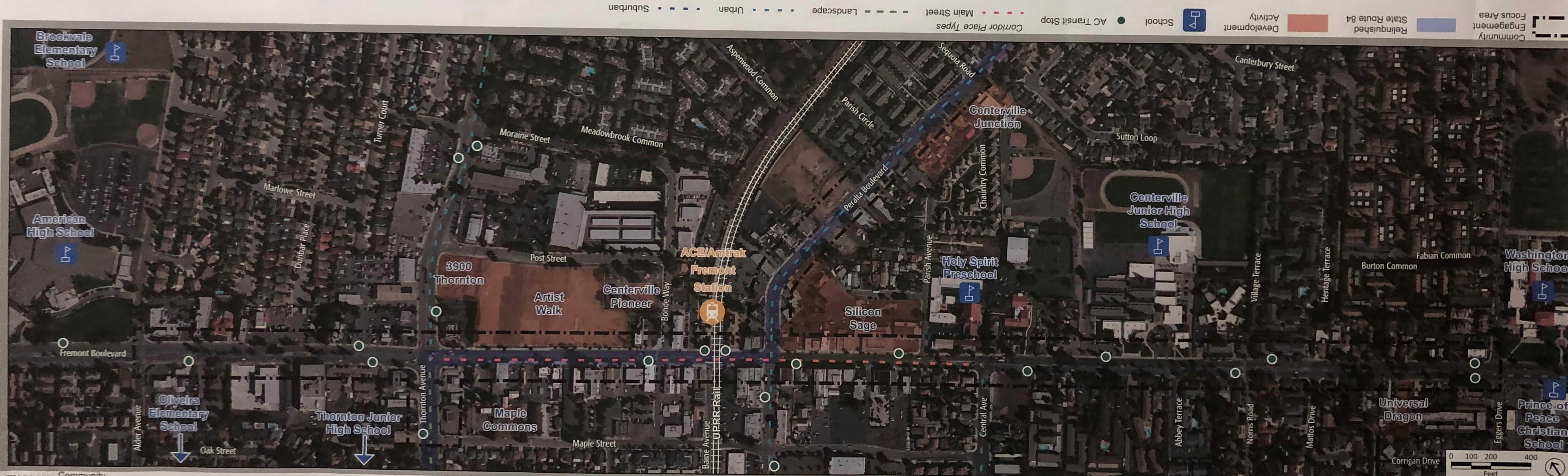
#4

- Landscaped medians
- Maintain # lanes but
- Others: narrow travel path/width
- Stop development
- More businesses.
- ~~@~~ better traffic control  
@ Thornton Jr. High
- Coordinated traffic lights
- Widened slw



# Centerville Complete Streets

*City to buy some empty lots & developers parking structures.*



Community Engagement Focus Area   Relinquished State Route 84   Development Activity   School   AC Transit Stop   Corridor Place Types: Main Street, Landscape, Urban, Suburban

*33497 Fremont Blvd, Fremont, Ca 94536  
 Driveway !! traffic signal in installation  
 Resident Frank Zhang  
 Contact email: rentergo renter@gmail.com*

*#4 table*

*Pak lot bank*



33497 Fremont Blvd, Fremont, Ca 94536  
Driveway !! traffic signal installation

Resident Frank Zhang

510-579-5100

email: rentergo renter @ Gmail . com

Contact

#4 table

Park lot  
built

Personal Feb 3 2016



Landscape    - - - - Urban    - - - - Suburban

City to buy  
some empty lots  
& develop parking structures.

- Dedicated bikeway ✓ - esp @ <sup>transit</sup> <sup>hubs</sup>
- Diagonal parking - back-in diagonal safer for bicyclists
- Greening
- Pedestrian crossing (safer)

Transit amenities - protect bikes + peds from transit transit island

ok w/ slowing traffic to create a destination

ok parking away from street behind bldgs to make room for other amenities

outdoor seating  
sidewalk widening

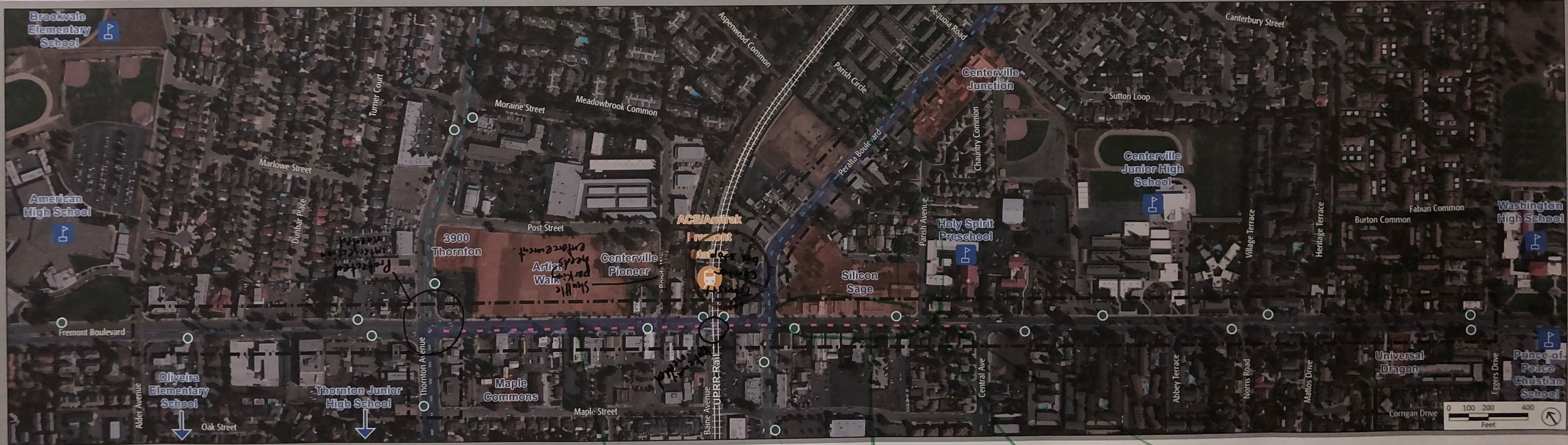
keep local biz. community - not just restaurants

want Centerville BD to be a destination

LT, city needs to maintain amenities (eg, enforcement of no parking drop off)

# Centerville Complete Streets

Community Engagement Focus Area Relinquished State Route 84 Development Activity School AC Transit Stop  
 Main Street  Landscape  Urban  Suburban



Community Engagement Focus Area Relinquished State Route 84 Development Activity School AC Transit Stop  
 Main Street  Landscape  Urban  Suburban

**TRANSIT Mall**

*Handwritten:* Need access is from back

*Handwritten:* \* Biking crosswalk

*Handwritten:* need bus pickup/dropoff loop into station

*Handwritten:* Needs wide sidewalks for active frontage + outdoor seating

*Handwritten:* fast + outdoor traffic seating

*Handwritten:* if traffic is slow enough, bike facilities protected

*Handwritten:* increased transit service (every 10') will need more protection for bicyclists

**#5**



Thornton Junior High School

Thornton Avenue

Maple Commons

Maple Street

Shuttle parking spaces  
enforcement.

Post Street

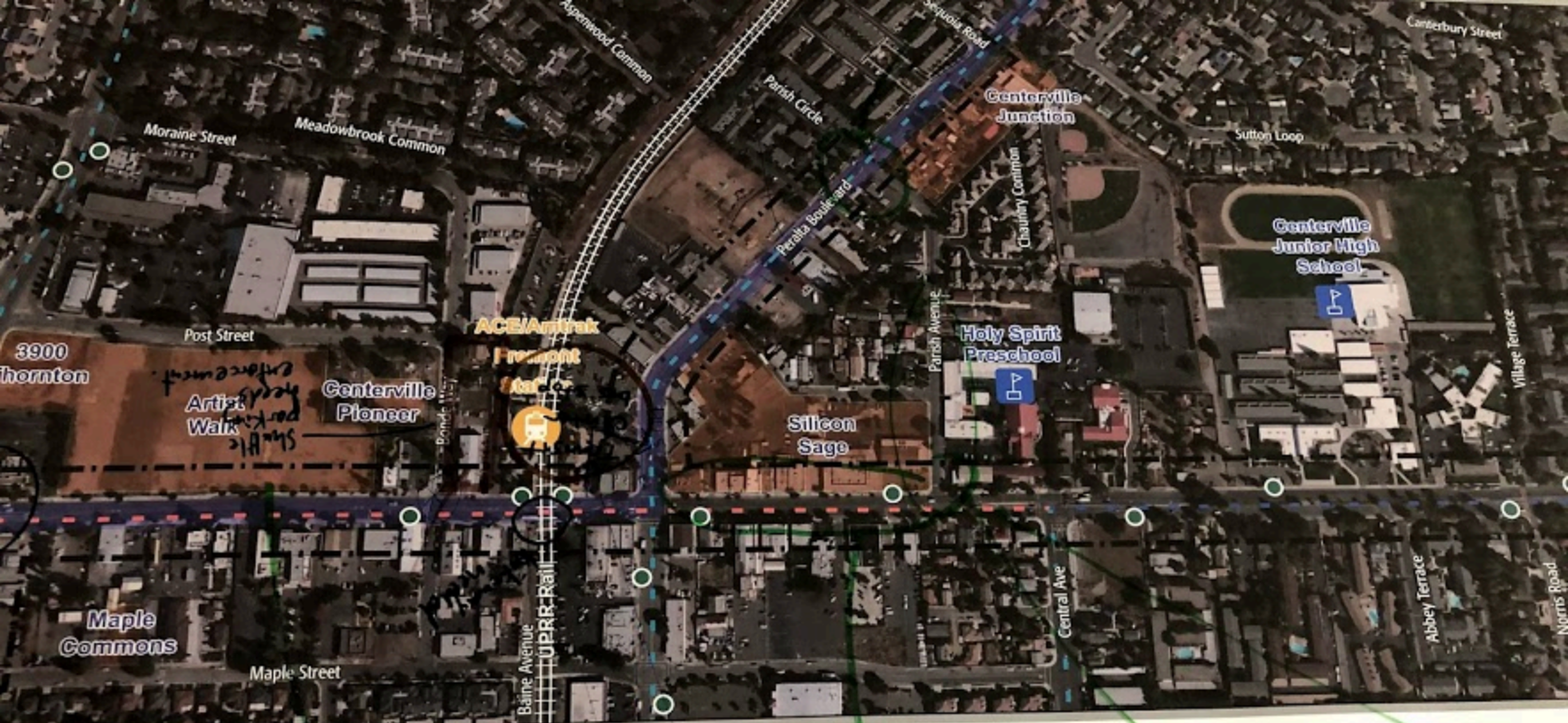
Thornton 3900

Protected intersection needed

Dunbar Place

Center for the Performing Arts

Artist Walk



- AC Transit Stop
- Corridor Place Types
- Main Street
- Landscape
- Urban
- Suburban

TRANSIT  
MALL

Van access  
is from  
back

\* Blinking  
crosswalk

need  
bus pickup/  
drop-off loop  
into station

improve  
safety crossing  
street to  
ACE/Amtrak  
station

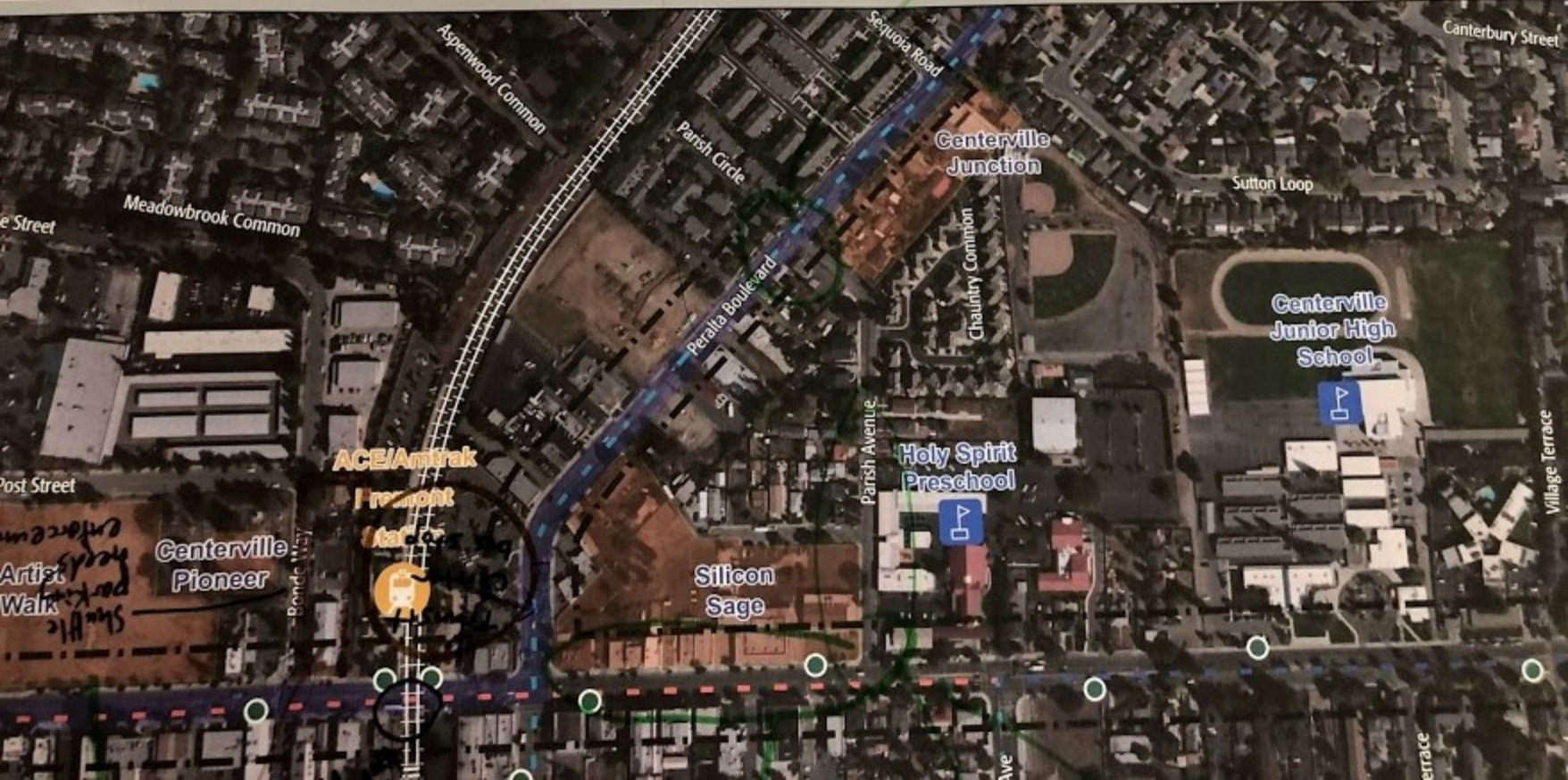
Needs  
wide  
sidewalks  
for active  
frontage  
+ outdoor traffic  
seating

Legend:
 

- Activity (Orange square)
- Development (Blue square with house icon)
- School (Blue square with school icon)
- AC Transit Stop (Black circle)
- Corridor Place Types:
  - Main Street (Red dashed line)
  - Landscaped (Green dashed line)
  - Urban (Blue dashed line)
  - Suburban (Black dashed line)

*Merged traffic will require added bike/ped protection*

*difficult to turn*



*Artist Walk*  
*Shuttle parking enforcement*

Centerville Pioneer

ACE/Amtrak  
Peralta  
Station

Silicon Sage

Holy Spirit Preschool

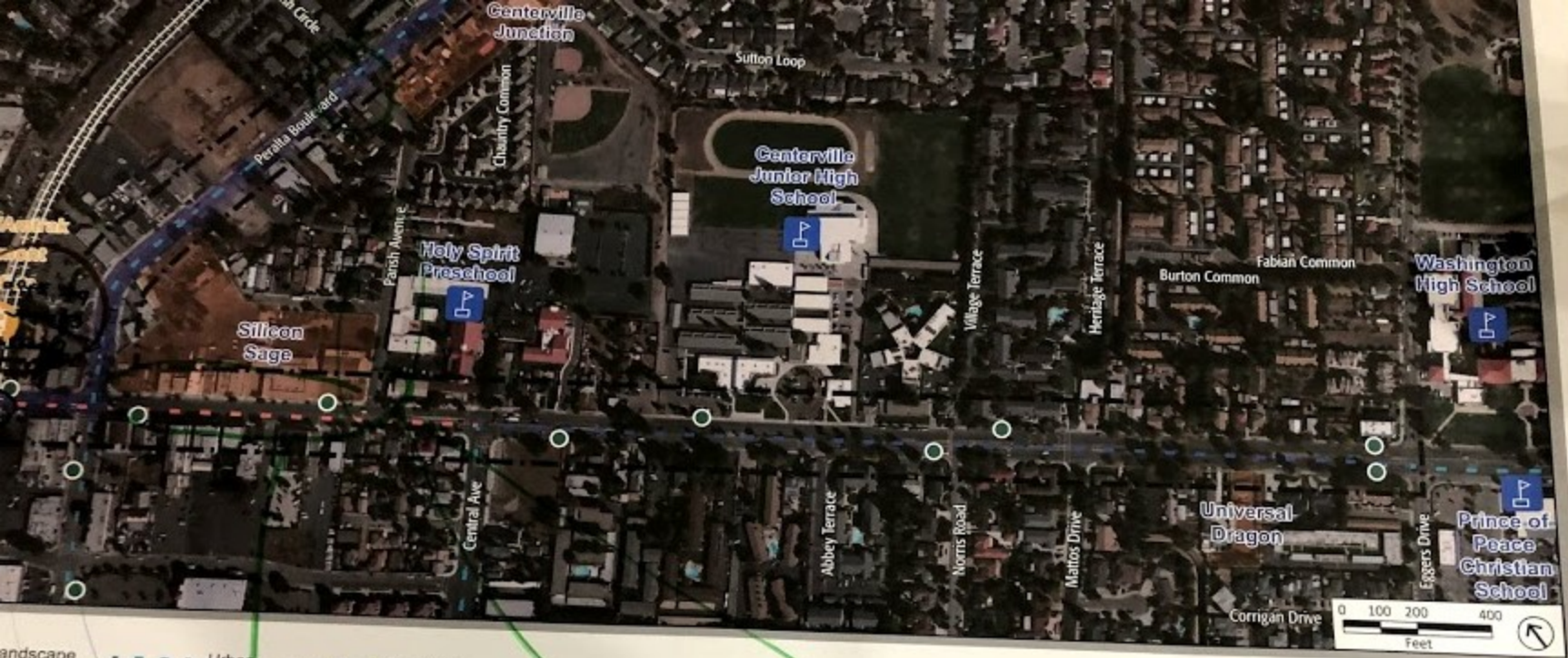
Centerville Junior High School

Centerville Junction

Village Terrace

terrace





back

improve safety crossing street w/ PACE / Amtrak structure

needs wide sidewalks for active frontage + outdoor seating

if traffic is slow enough, bike facilities protected

increased transit service (every 10') will need more protection for bicyclists

#5

#6

How much activity  
comes from Train.

Parking requirements  
for city.

Parallel streets

By pass

Paseo Parkway

Blacow

Train-grade separation

wider sidewalks

Transit amenities  
- places for buses to pull over

Diagonal Parking

Gathering / seating

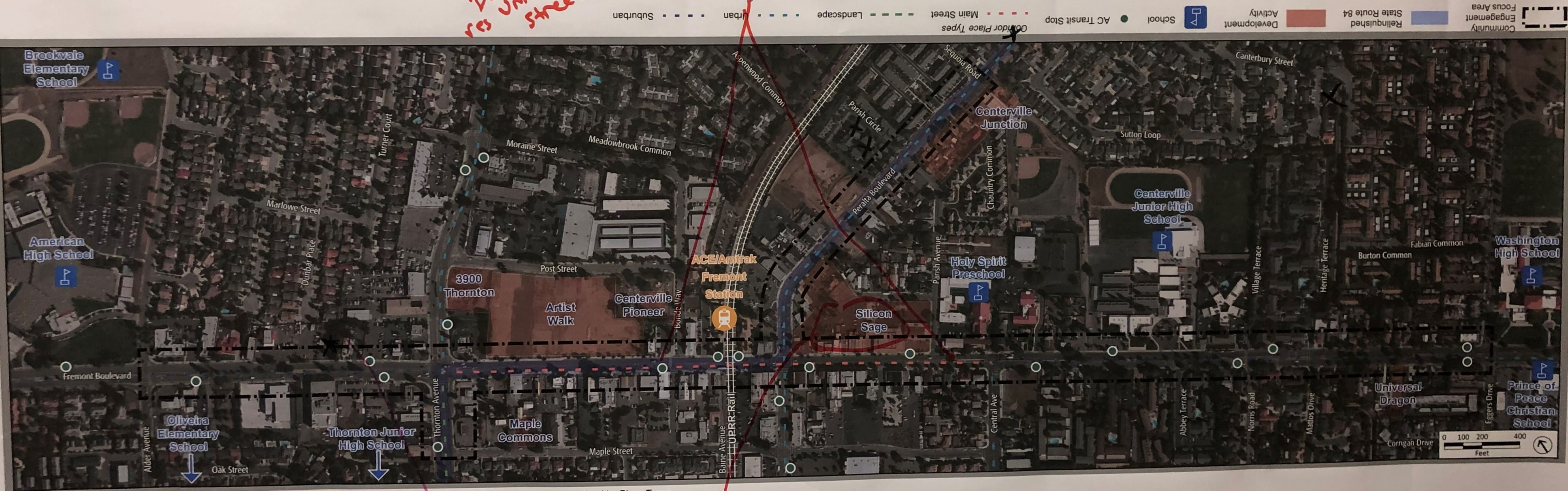
Others

vehicle travel lanes

greening

# Centerville Complete Streets

*Don't like the  
as units on the  
street  
GREENS*



Community Engagement Focus Area  
Relinquished State Route 84  
Development Activity  
School  
AC Transit Stop  
Corridor Place Types  
Main Street  
Landscape  
Urban  
Suburban

*Need CROSSwalks*

*BUY  
MAKE  
PARKING  
How many  
spots  
can you fit  
with diagonal?  
Need to  
provide  
adequate  
parking*

*#6*