

WELCOME!



SABERCAT TRAIL EXTENSION PROJECT WITH I-680 BRIDGE, UPRR/BART CROSSING AT BLACOW, AND MUSEUM

Live Web Public Meeting

June 24, 2020

6:00 p.m. – 7:30 p.m.



TODAY'S SPEAKERS (PANELISTS)



Hans Larsen
Public Works Director



Rajeev Batra
Fremont Project Manager



Jeanne Suyeishi
Fremont Project Manager



Jodi Ketelsen
Design Team
Environmental Manager



Mark Ashley
Design Team
Project Manager



Noel Shamble
Design Team Bridge Designer

MEETING PURPOSE



Inform the Community and Gather Input On...

1. Project objectives
2. Environmental and social issues that might influence project study
3. Review of design elements
4. Information about trail uses



Valuable Input Includes:

- Comments about the Project purpose or Project objectives
- Describe your interest in the Project
- How might this Project affect you
- Please provide specific site information or environmental issues regarding this Project

MEETING FORMAT



1. Presentation



2. Question and Answer Session



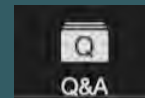
3. Provide your Comments.

Following the meeting, we encourage everyone to fill out the comment form located on the Project website.



Please be aware this meeting will be recorded and available on the Project website a few days following the meeting:

<http://www.fremont.gov/SabercatBicyclePedestrianTrail>



During the presentation, submit your questions using the **Q&A** button – we will address all questions following the presentation.



During the Q&A portion, we will call upon people that have selected '**Raise Hand**' to provide a verbal comment. To be respectful of all participants, a 60-second limit will be enforced.



PRESENTATION AGENDA



- **Meeting Purpose**
- **Project Purpose**
- **Project Development Overview**
- **Review of Project Setting**
- **Examples of Project Elements from Other Locations**
- **Opportunities for Engagement and Input**

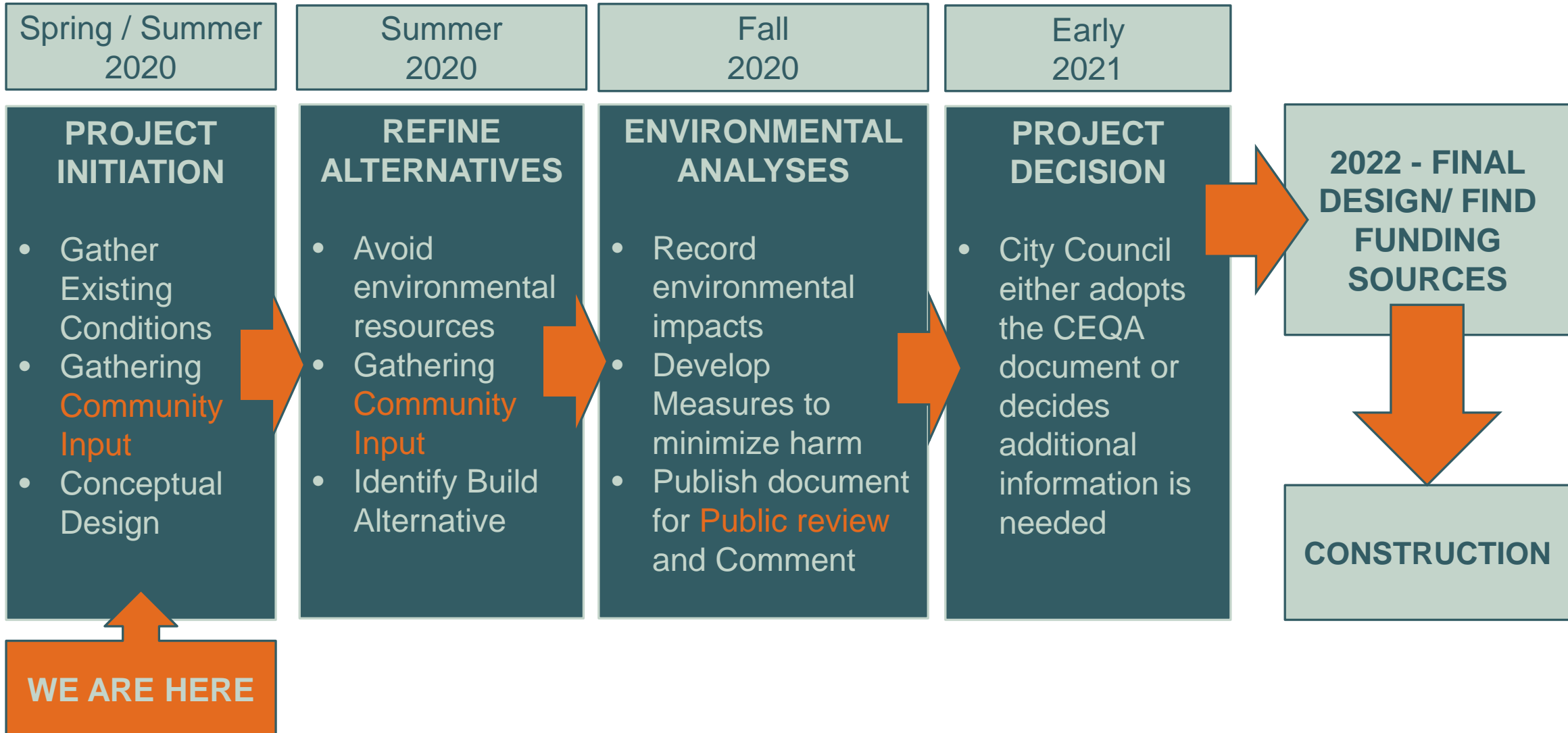


PROJECT PURPOSE

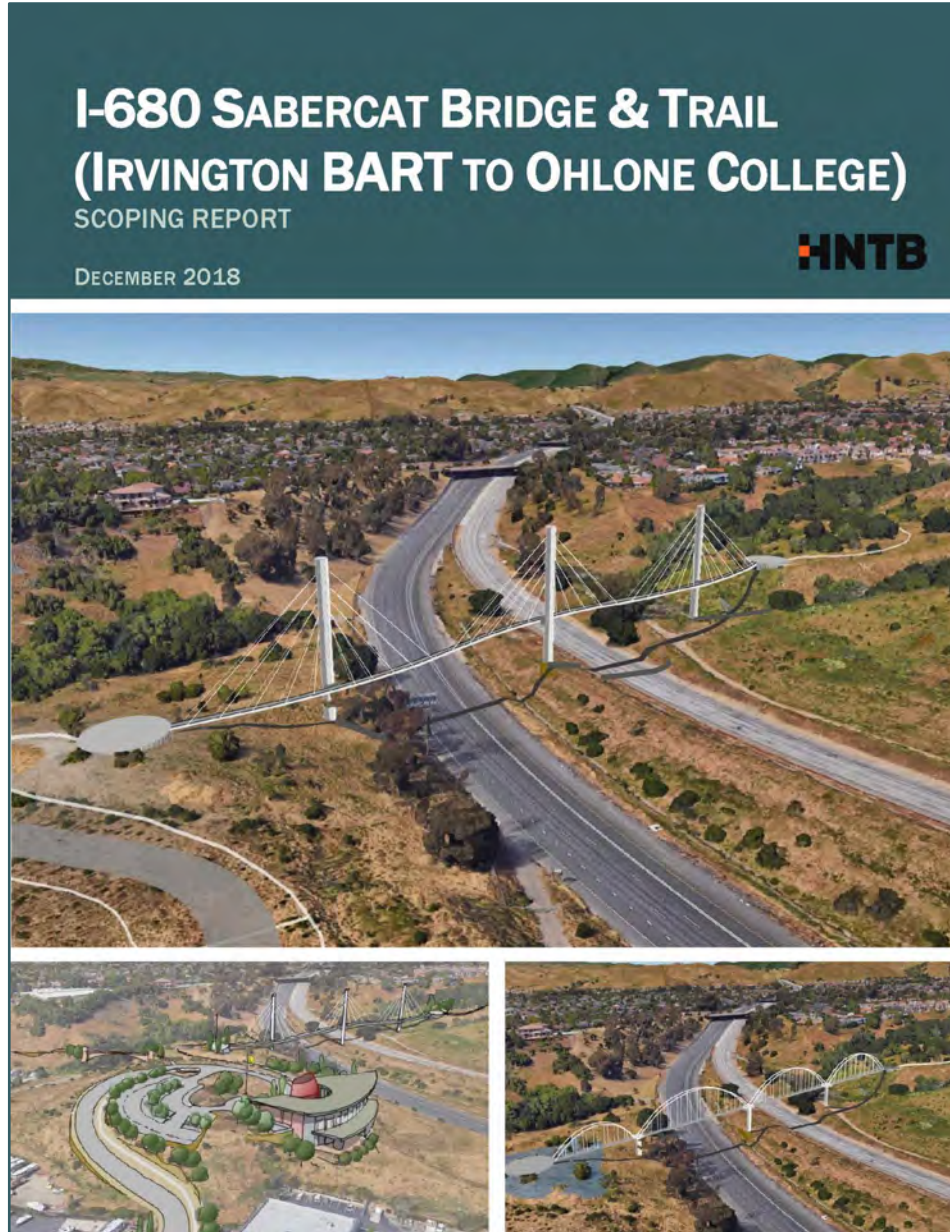


1. Overcome barriers for non-motorized circulation including UPRR/BART rail corridor and I-680
2. Increase connectivity by providing a direct, convenient, and safe route for bicyclists and pedestrians to:
 - Future Irvington BART station
 - East Bay Greenway
 - Sabercat Historical Park and trail
 - East Bay Regional Park District (EBRPD) areas in the Diablo Range foothills
 - Ohlone College
 - Fremont residential communities and business centers

PROJECT DEVELOPMENT PROCESS



PROJECT CONTEXT



Previously prepared
I-680 Sabercat Bridge & Trail Scoping Report
(2018) provided
conceptual approach

CITY BICYCLE PLAN MAP

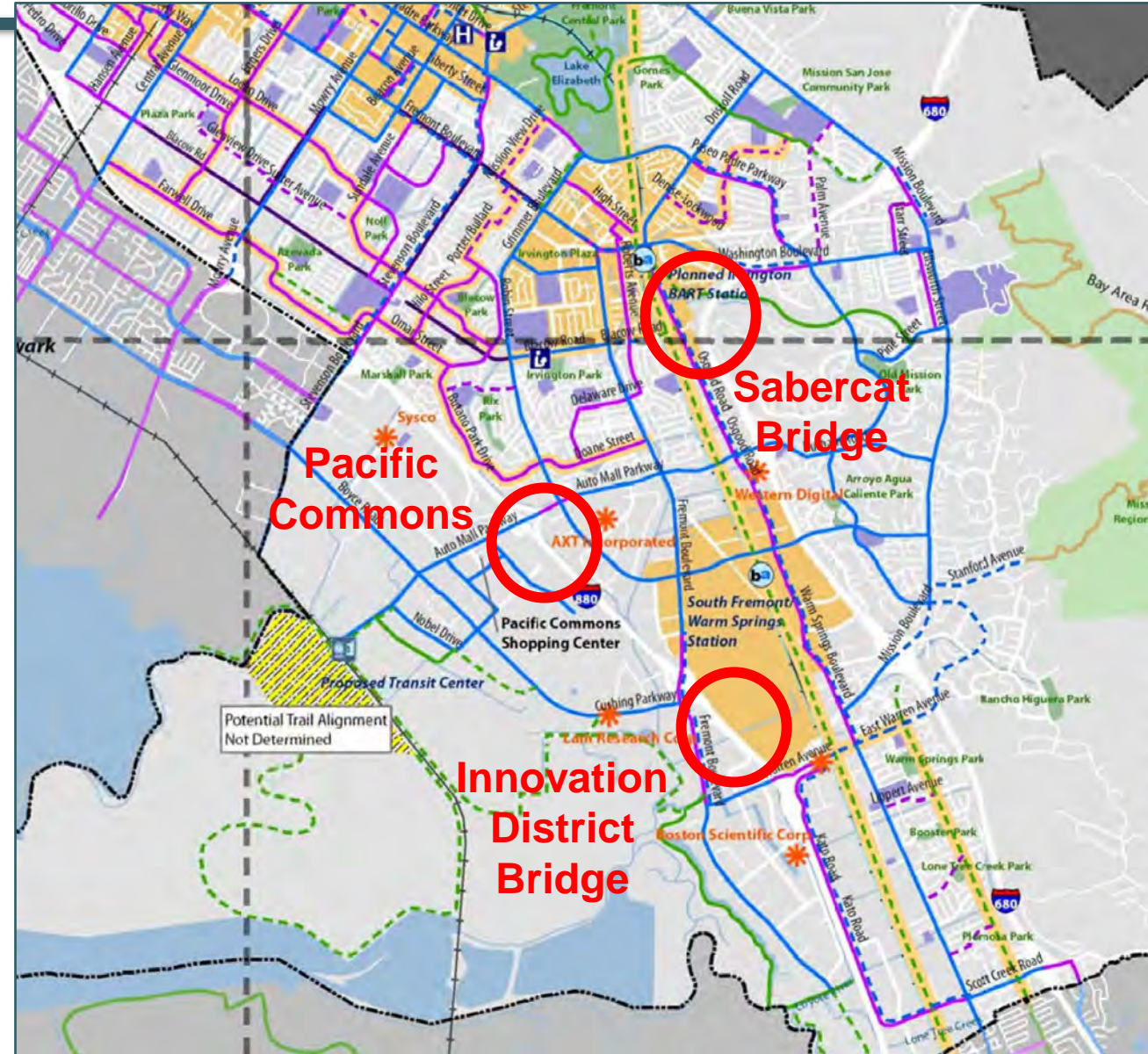


Proposed Bikeways

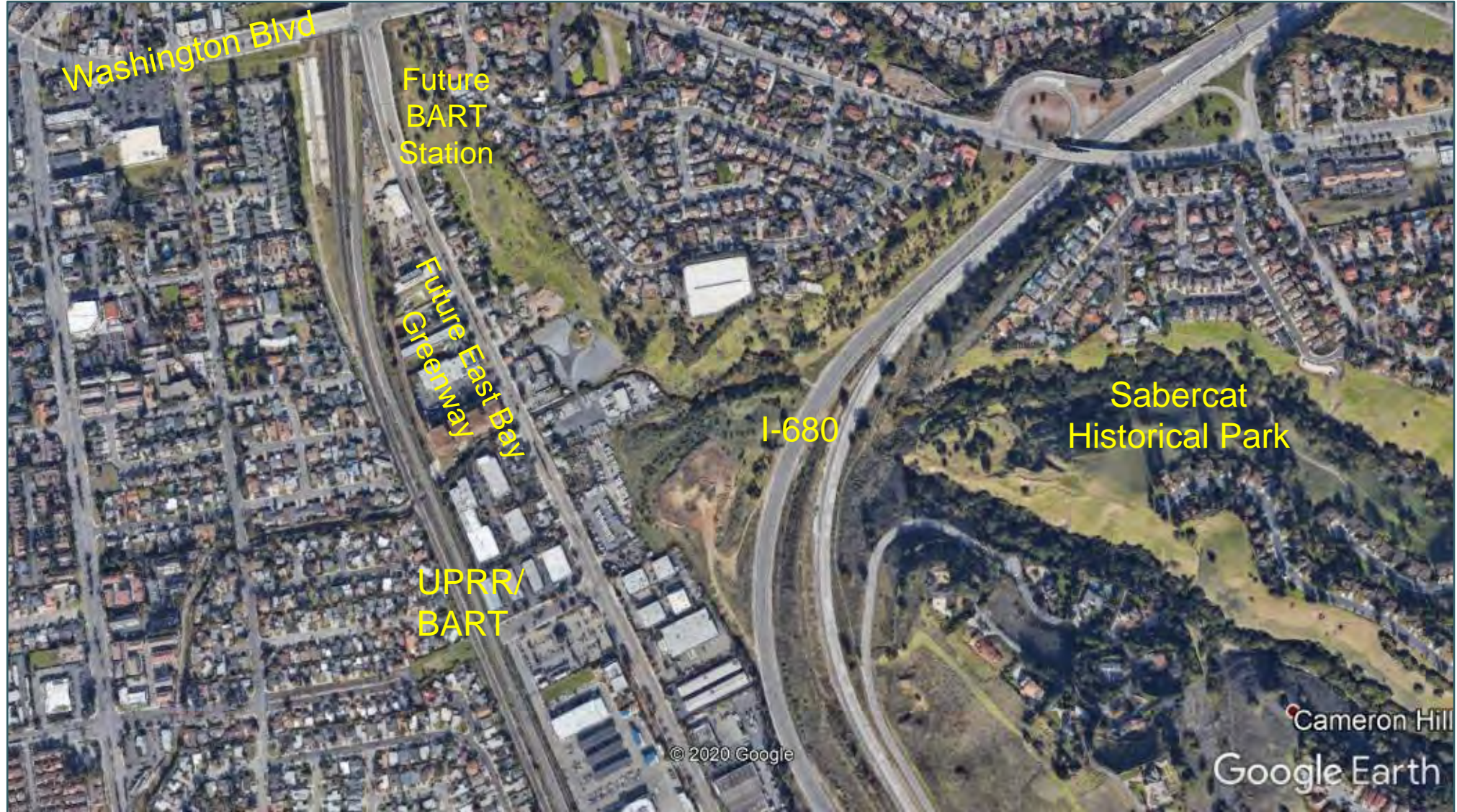
- Class I Multi-Use Paths
- Class II Bicycle Lanes
- Class III Bicycle Routes
- Crosstown Routes

Existing Bicycle Facilities

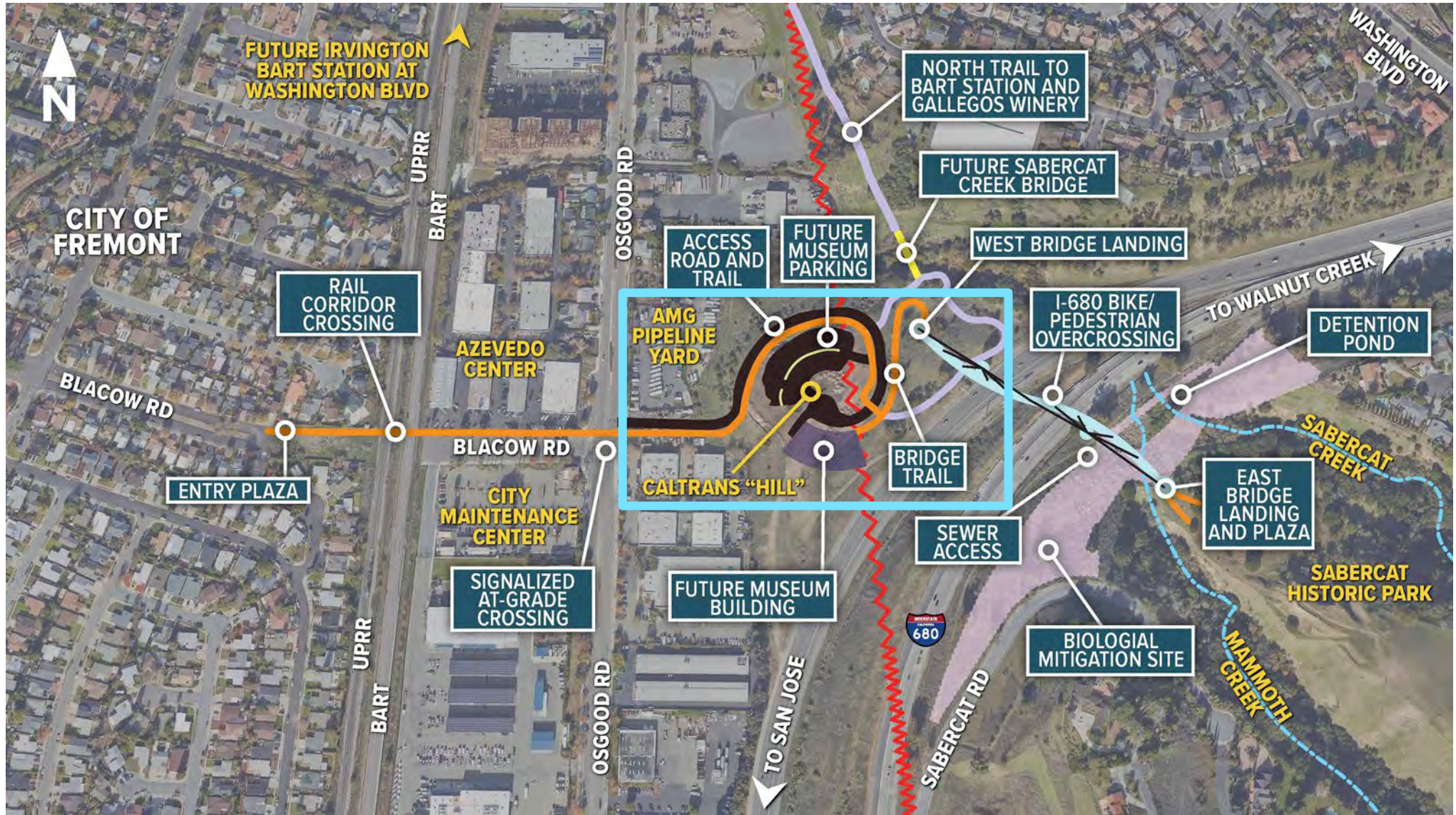
- Unpaved Paths
- Class I Multi-Use Paths
- Class II Bicycle Lanes
- Class III Bicycle Routes
- Bike Lane (One Direction)
- Frontage Road Bicycle Routes (Class III)



PROJECT SETTING



PROJECT ELEMENTS – SECTION 2



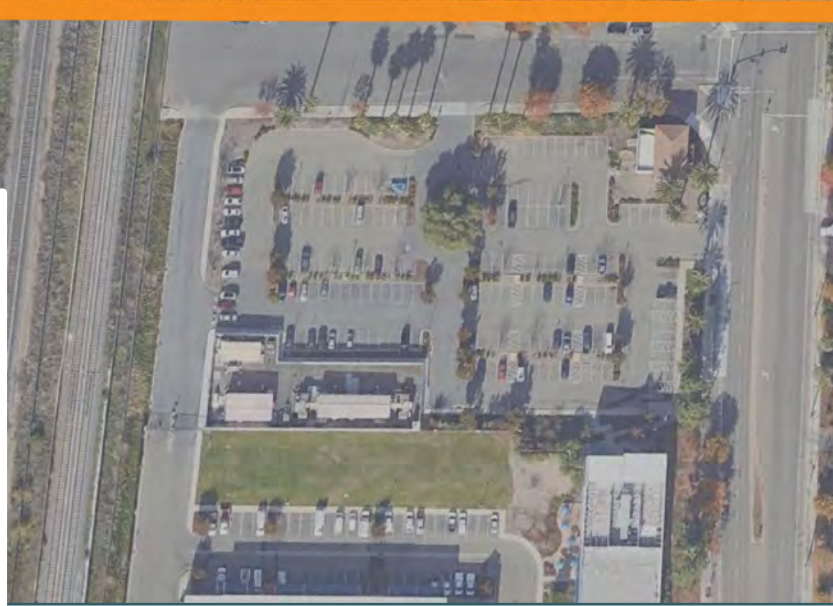
PROJECT ELEMENTS – SECTION 3



PROJECT ELEMENTS – SECTION 4



SECTION 1 – BLACOW - UPRR/BART



EXAMPLES FOR BART/UPRR CROSSING



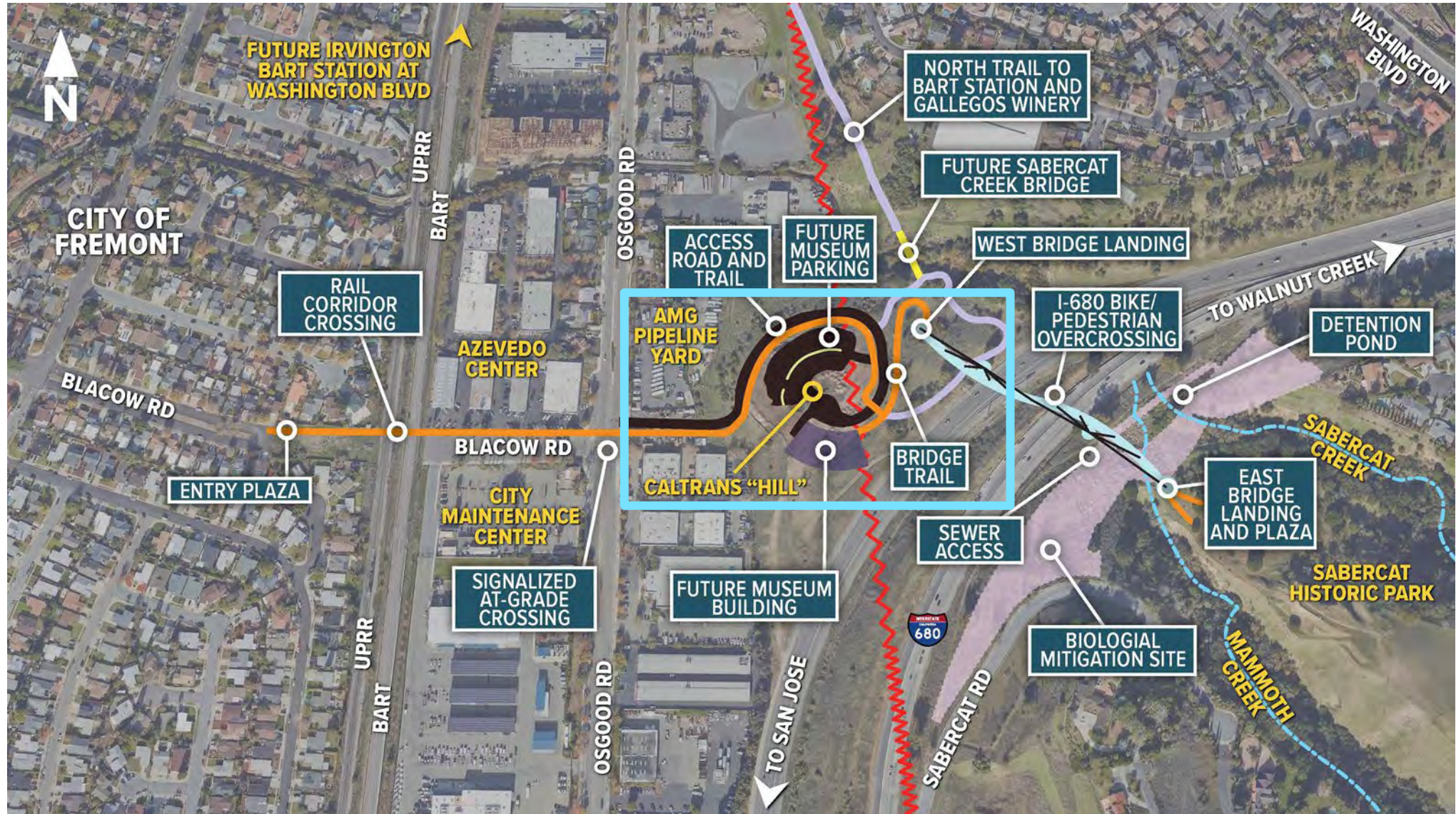
Examples of Underpass Crossing

EXAMPLES FOR BART/UPRR CROSSING

Examples of Overhead Crossings



PROJECT ELEMENTS – SECTION 2



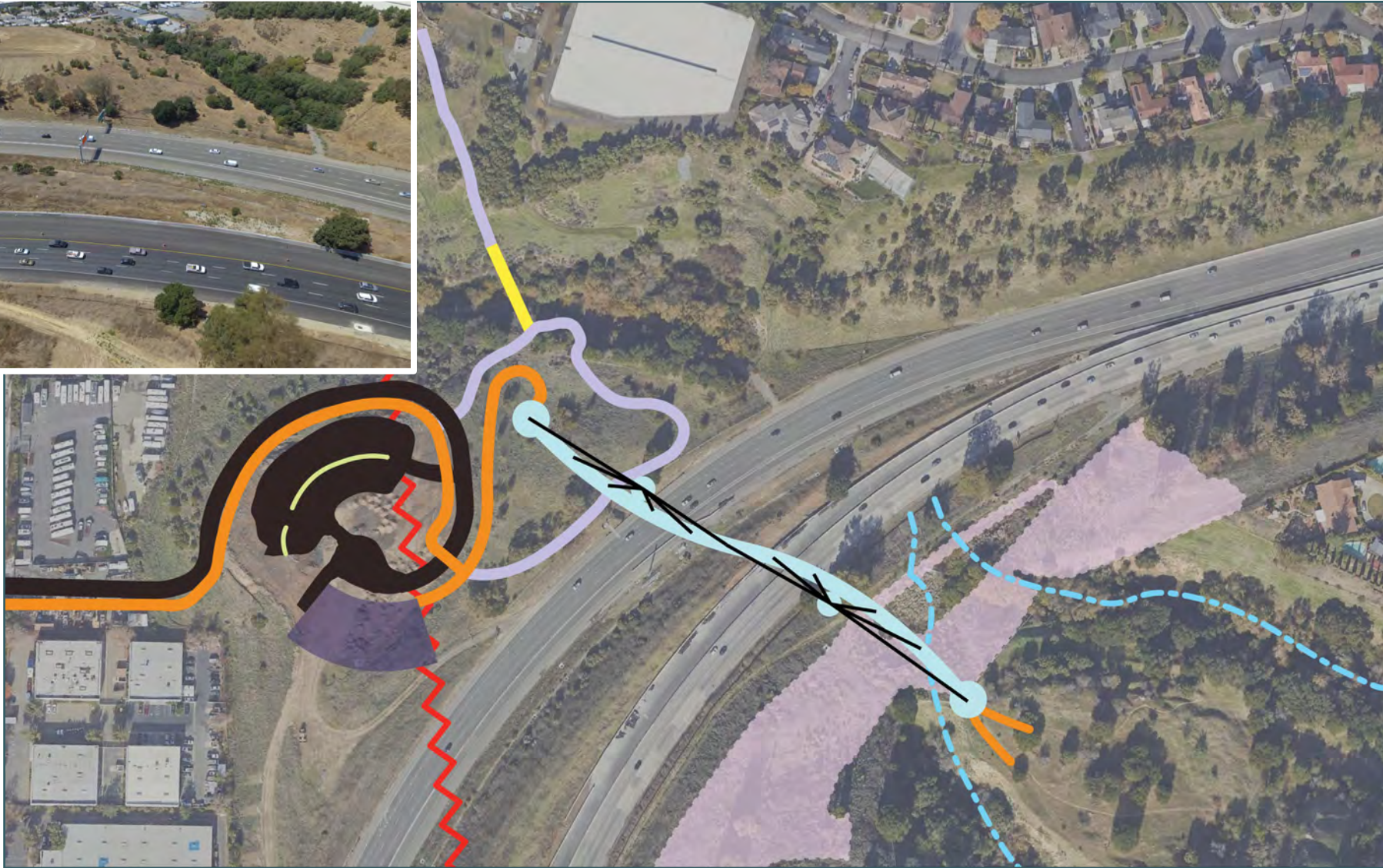
SECTION 2 – OSGOOD ROAD TO I-680



PROJECT ELEMENTS – SECTION 3



SECTION 3 – SABERCAT BRIDGE OVER I-680



I-680 OVERCROSSING CONCEPTS



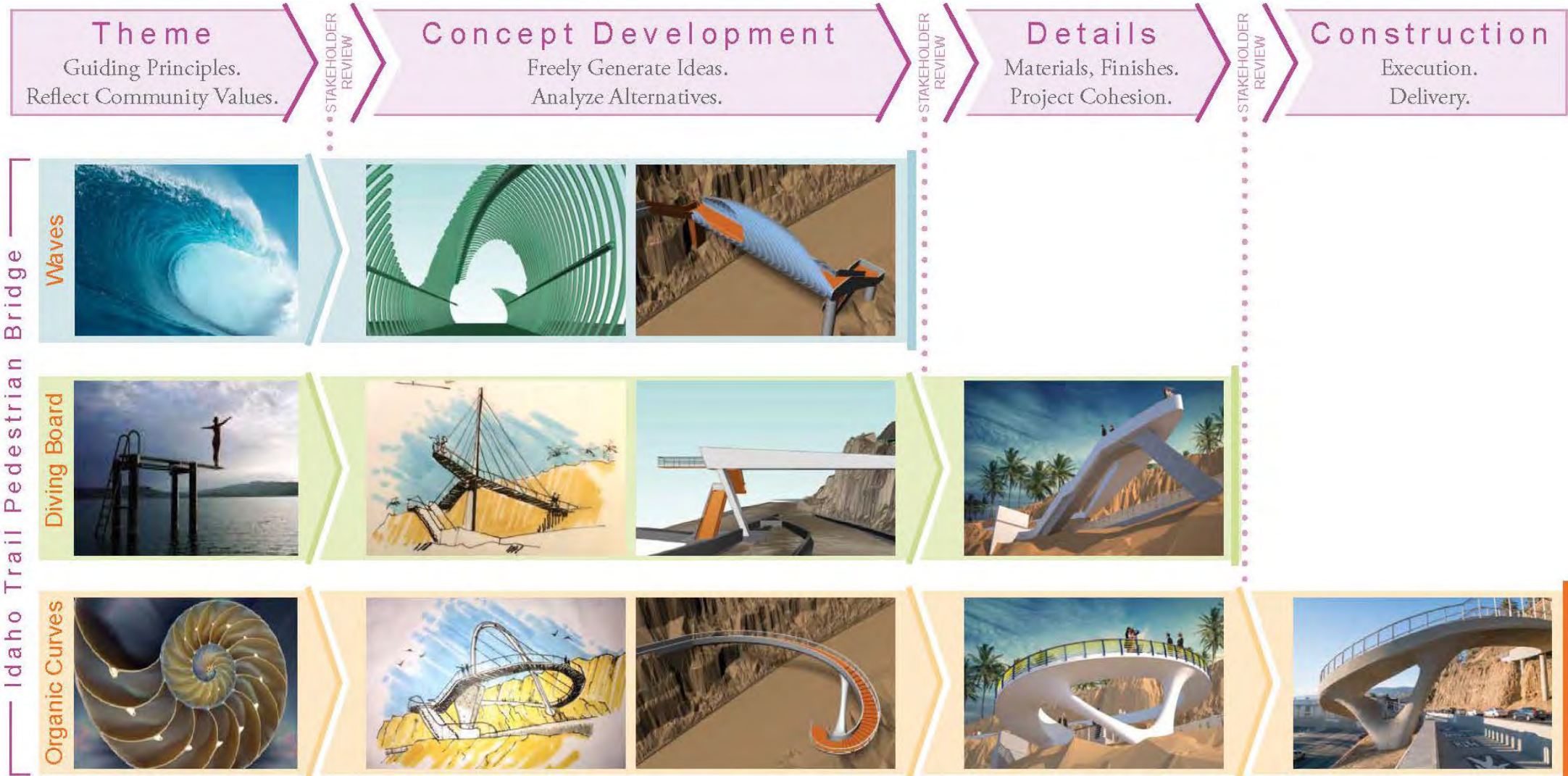
- Create an iconic visual feature
- Avoid blocking, rather, enhance existing views
- Connect Fremont community
- Encourage active lifestyle opportunities



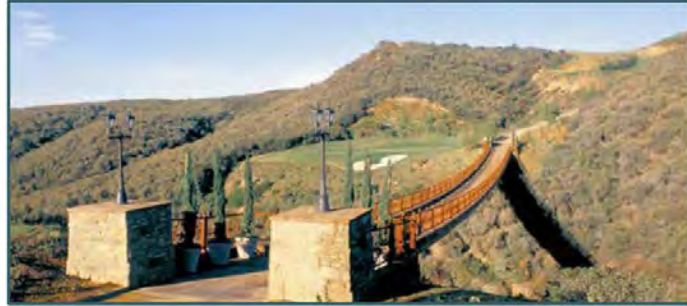
SECTION 4 – NORTH TO BART PATH SECTION



DESIGN PROCESS



EACH DESIGN IS UNIQUE TO ITS CONTEXT



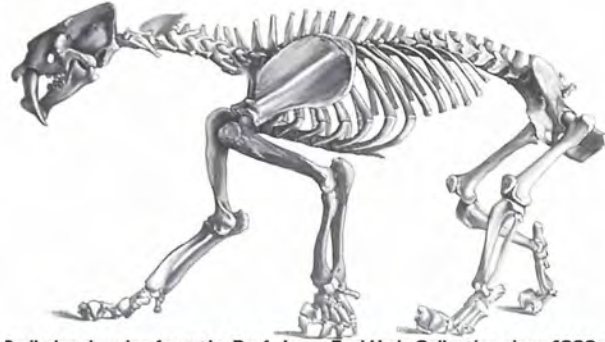
EXAMPLE BRIDGE DESIGN FOR I-880



POTENTIAL THEMES TO CONSIDER



SABERCAT



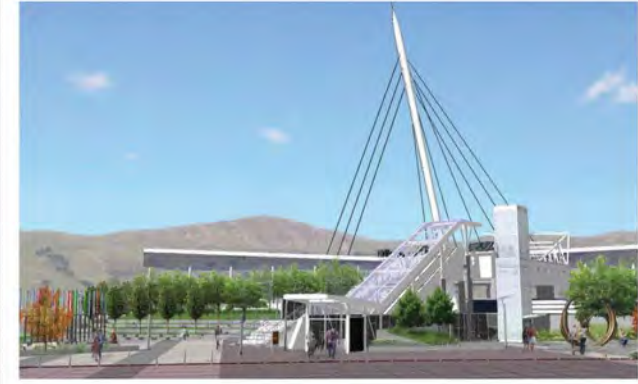
Smilodon drawing from the Prof. Jesse Earl Hyde Collection circa 1890s.



NATURAL



MODERN



THREE OPPORTUNITIES FOR INPUT



EARLY INPUT: INFLUENCE PROJECT DEVELOPMENT	NEXT: PROJECT REVIEW AND INPUT	CEQA: ENVIRONMENTAL REVIEW
<p><i>COLLECTING INPUT THROUGH JULY 10th, 2020</i></p> <p>Collecting your comments during this meeting</p> <p>Additionally, we will collect comments via survey, email and or handwritten comments</p>	<p><i>ANTICIPATE REVIEW OF CONCEPTS IN SUMMER 2020</i></p> <ul style="list-style-type: none"> • Sign-up for Project updates (Provide your email or mailing address) • Visit Website for Project input opportunities 	<p><i>EARLY 2021</i></p> <ol style="list-style-type: none"> 1. Environmental Document will be posted and available for 30-day review 2. Provide comments to City Council before making decision on Project

YOUR INPUT IS IMPORTANT



Valuable Input:



1. Comments about the Project purpose or Project objectives



2. Describe your interest in the Project



3. How might this Project affect you



4. Please provide specific site information or environmental issues regarding this Project



City will collect comments survey via a link on the website:

<http://www.fremont.gov/SabercatBicyclePedestrianTrail>

Email your comments:

SabercatProject@fremont.gov

Or mail your comments to:

**Public Works Department
Engineering Division
39550 Liberty Street
Fremont, CA 94538**

THANK YOU!



TIME FOR YOUR INPUT!

Please be aware this meeting will be recorded and available on the Project website a few days following the meeting:
<http://www.fremont.gov/SabercatBicyclePedestrianTrail>



During the presentation, submit your questions using the **Q&A** button – we will address all questions following the presentation.



During the Q&A portion, we will call upon people that have selected '**Raise Hand**' to provide a verbal comment. To be respectful of all participants, a 60-second limit will be enforced.

