

WELCOME!



SABERCAT TRAIL EXTENSION PROJECT

Live Web Public Meeting

June 2, 2021

6:30 p.m. – 8:00 p.m.



TODAY'S SPEAKERS



Hans Larsen
Public Works Director



Rajeev Batra
Fremont Project Manager



Jeanne Suyeishi
Fremont Project Manager



Jodi Ketelsen
Design Team
Environmental Manager



Mark Ashley
Design Team
Project Manager



Noel Shamble
Design Team Bridge Architect



ADDITIONAL PANELIST



Suzanne Wolf
Community Services
Director

Kim Petersen
Police Chief

Jay Swardenski
Fire Marshal

Roger Ravenstad
Park Planning and Design
Manager

Paul McCormick
Police Sergeant

Zoraida Diaz
Deputy Fire Chief, Operations

Juan Barajas
Park Superintendent



MUSEUM ASSESSMENT IS SEPARATE



Initially, Museum was being planned with trail

Caltrans resisted using their property for the museum

City has initiated a separate museum location assessment

Public input process is forthcoming

PRESENTATION AGENDA



- Meeting Purpose



- Project Purpose



- Project Development Overview



- Respond to Public Input



- Project Design Updates

- BART/ UPRR Overhead Crossing
- I-680 Overcrossing bridge



- Environmental Studies



- Opportunities for Engagement and Input

MEETING FORMAT



1. Presentation

2. Question and Answer Session

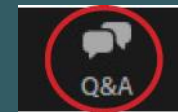
3. Provide your Comments

Following the meeting, we encourage everyone to provide your comments either in chat or verbally this evening or...

via email or mailing your comments to the City

Please be aware this meeting **will be recorded and available** on the Project website within a few days following the meeting:

<http://www.fremont.gov/SabercatBicyclePedestrianTrail>



During the presentation, submit your questions using the **Q&A** button – we will address questions following the presentation as time allows.



During the Q&A portion, we will call upon people that have selected **'Raise Hand'** to provide a verbal comment. To be respectful of all participants, a 60-second limit will be enforced.

MEETING FORMAT



1. Presentation

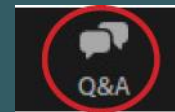
2. Question and Answer Session

3. Provide your Comments

Following the meeting, we encourage everyone to provide your comments either in chat or verbally this evening or... via email or mailing your comments to the City

Please be aware this meeting will be recorded and available on the Project website a few days following the meeting:

<http://www.fremont.gov/SabercatBicyclePedestrianTrail>



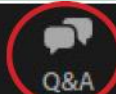
During the presentation, submit your questions using the **Q&A** button – we will address questions following the presentation as time allows.



During the Q&A portion, we will call upon people that have selected **'Raise Hand'** to provide a verbal comment. To be respectful of all participants, a 60-second limit will be enforced.



Participants



Q&A



Polls



Chat



Share Screen



Raise Hand



Record



More



MEETING PURPOSE



Respond to Community Input and Gather Input On...

1. Project Development
2. Supporting Studies

Valuable Input Includes:

1. Comments about the Project purpose.
2. What do you like or dislike about the design concepts, why?
3. How might this Project affect you?
4. Input on environmental and social issues regarding this Project.

PROJECT PURPOSE



Purpose of Sabercat Trail Extension is to

1. Overcome barriers for non-motorized circulation including UPRR/BART rail corridor and I-680;
2. Increase connectivity by providing a direct, convenient, and safe route for bicyclists and pedestrians.



PROJECT DEVELOPMENT OVERVIEW

PROJECT DEVELOPMENT PROCESS



PROJECT SETTING



Sabercat Historical Park Resources

- Irvingtonian Fossils
- Sabercat Creek's Natural Riparian Corridor
- Native American – Ohlone People
- Agricultural and Mining Heritage



PROJECT CONTEXT



Previously prepared
*I-680 Sabercat Bridge &
Trail Scoping Report
(2018)* provided
conceptual approach



PROJECT OVERVIEW



PUBLIC INPUT

PUBLIC COMMENTS



1. Suitability of the Existing Sabercat Creek Trail



2. I-680 crossings and trail alignment suggestions



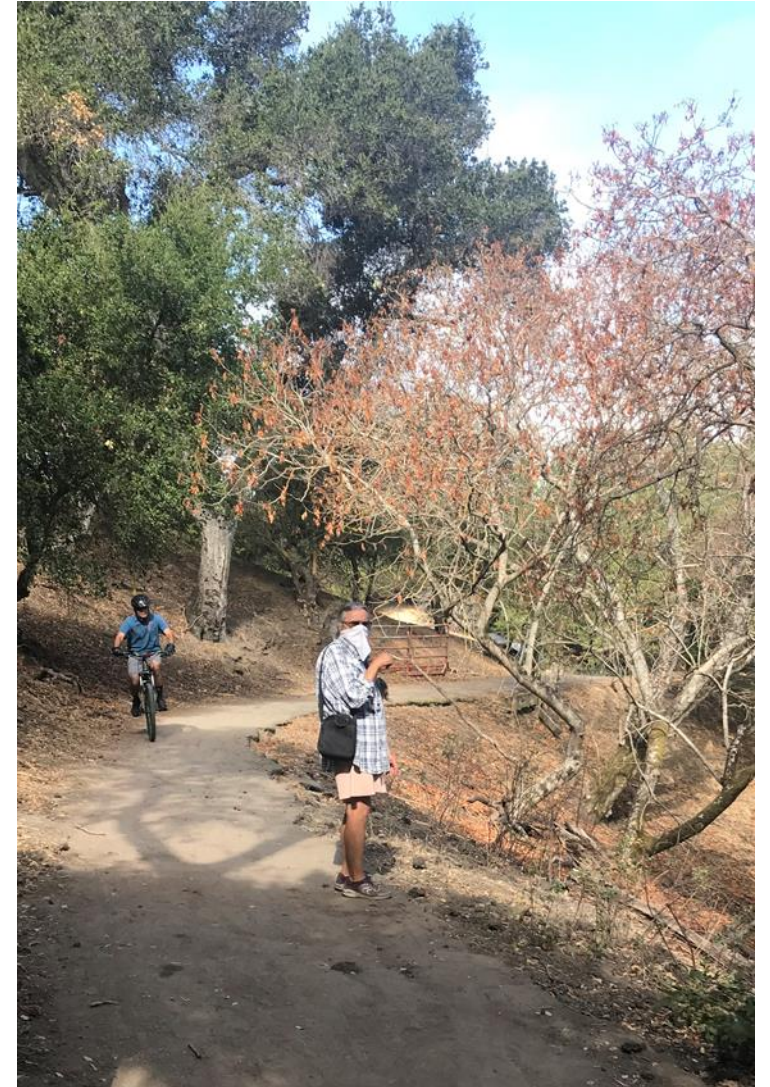
3. Safety/Security Issues



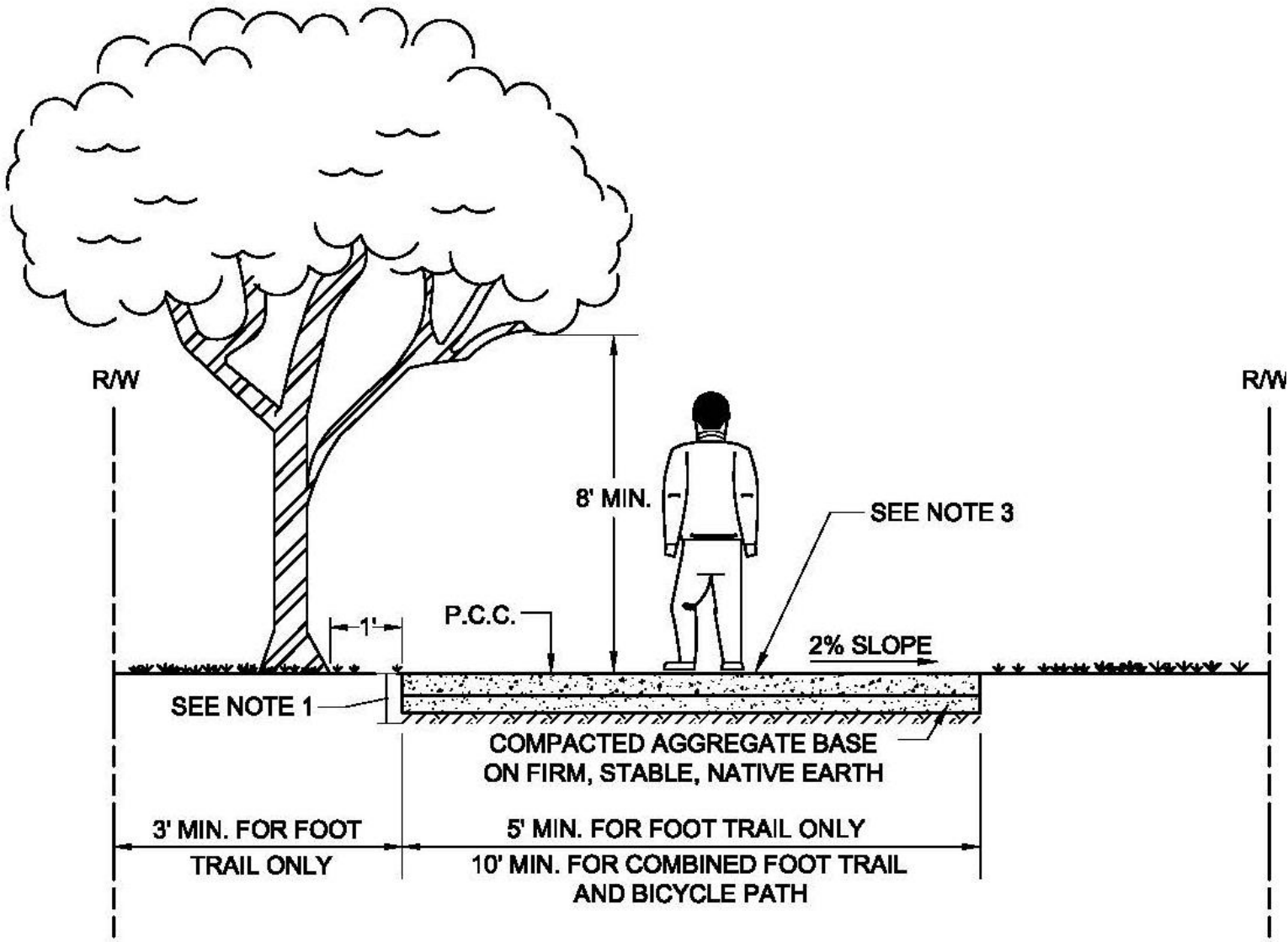
SUITABILITY OF EXISTING SABERCAT TRAIL



- Existing trail is narrow in places
- City is considering improvements to accommodate increased use



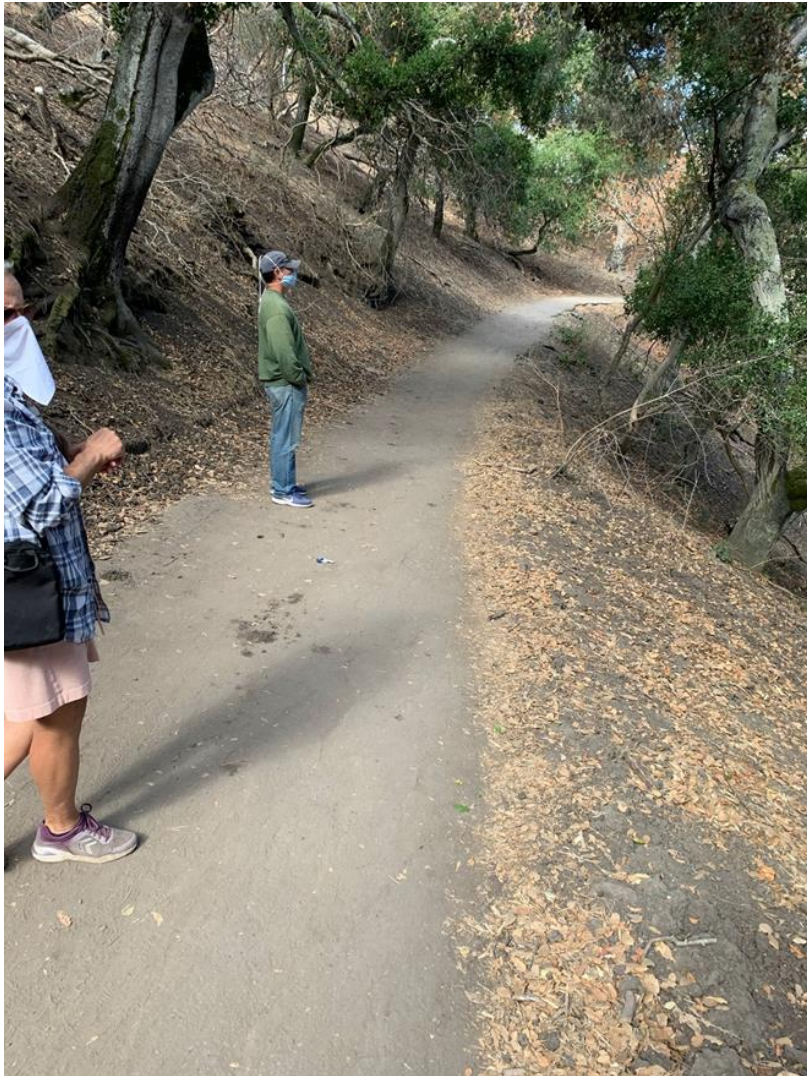
TRAIL DETAIL



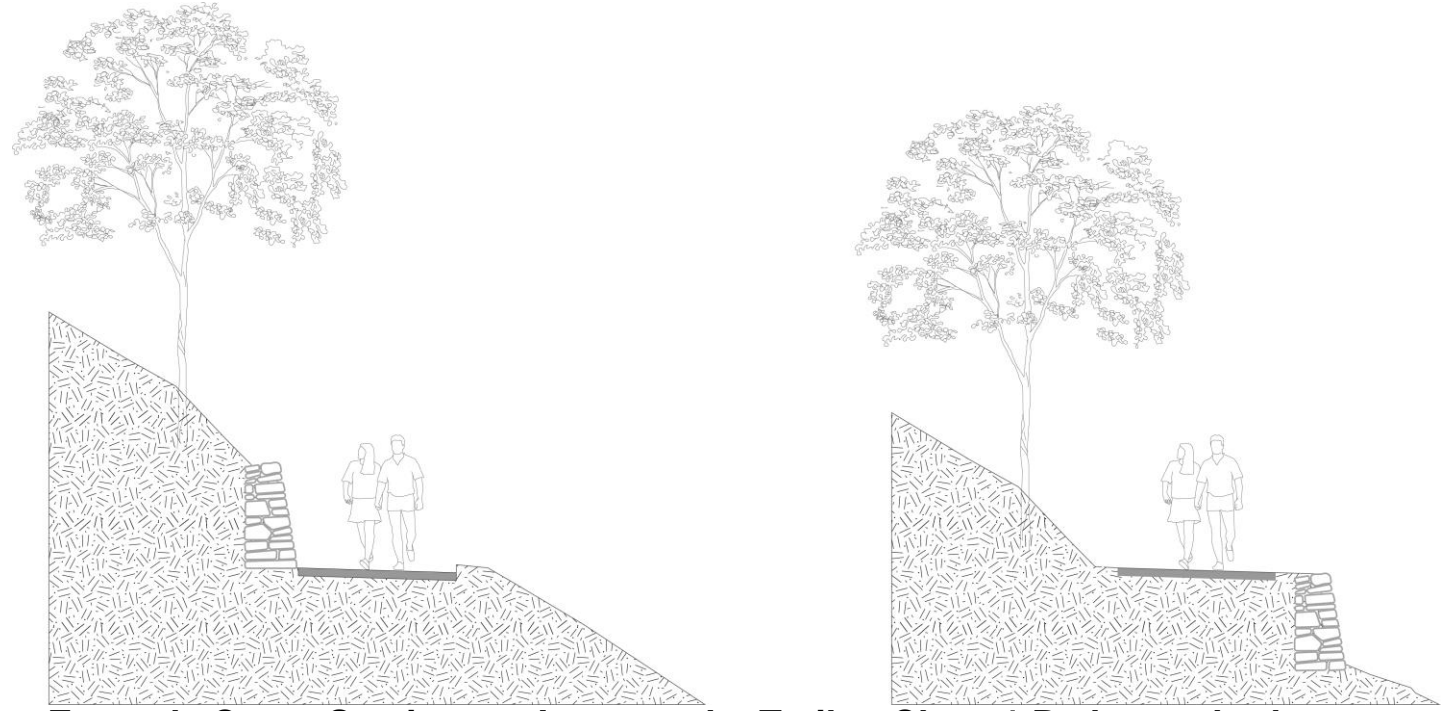
Class I Bike/Ped trail:

- Paved 10-foot trail
- Shoulders are generally 2 feet wide beyond the trail
- Trail slope would be ADA accessible (<5 percent)
- Drainage may include small culverts under trail and/or swales outside shoulders

PROPOSED SABERCAT CREEK TRAIL IMPROVEMENTS

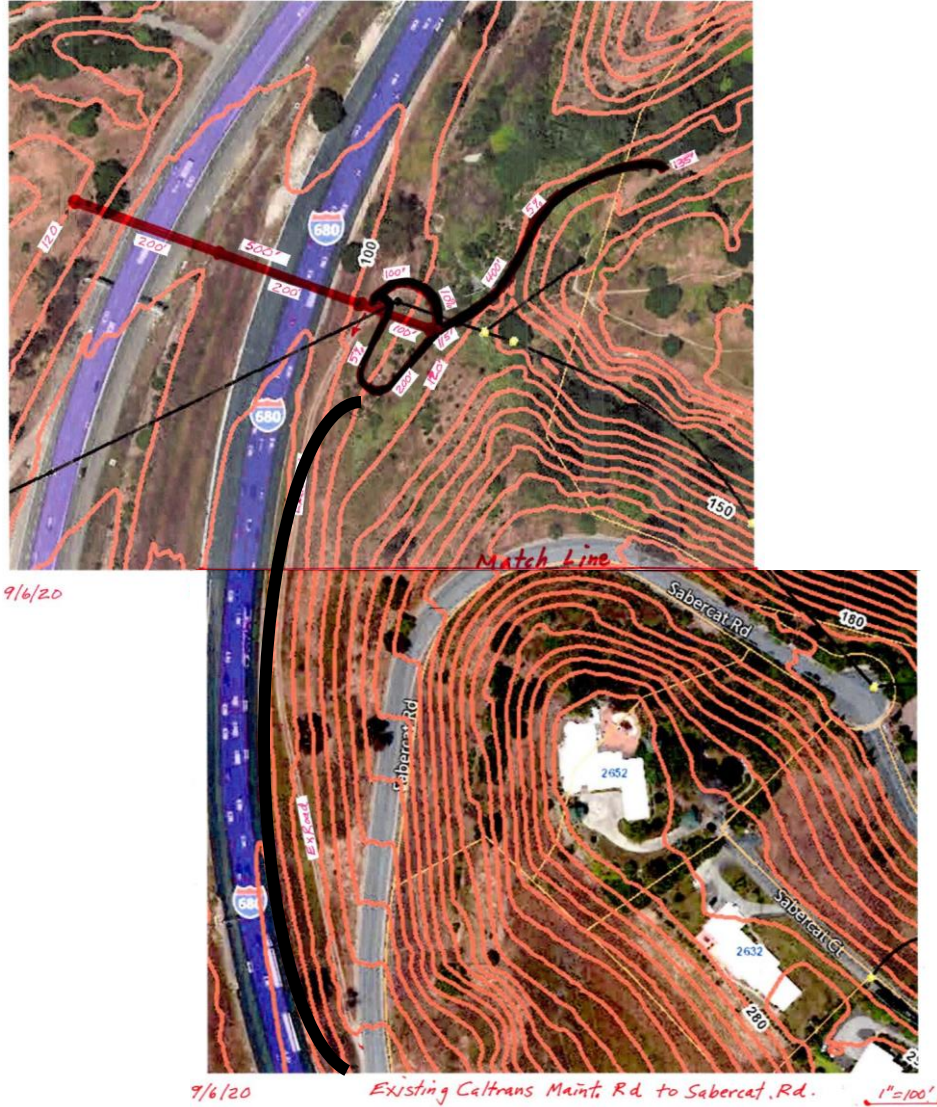


- Widen trail using retaining structures
- Selective vegetation removal
- Bicycle traffic “calming” measures

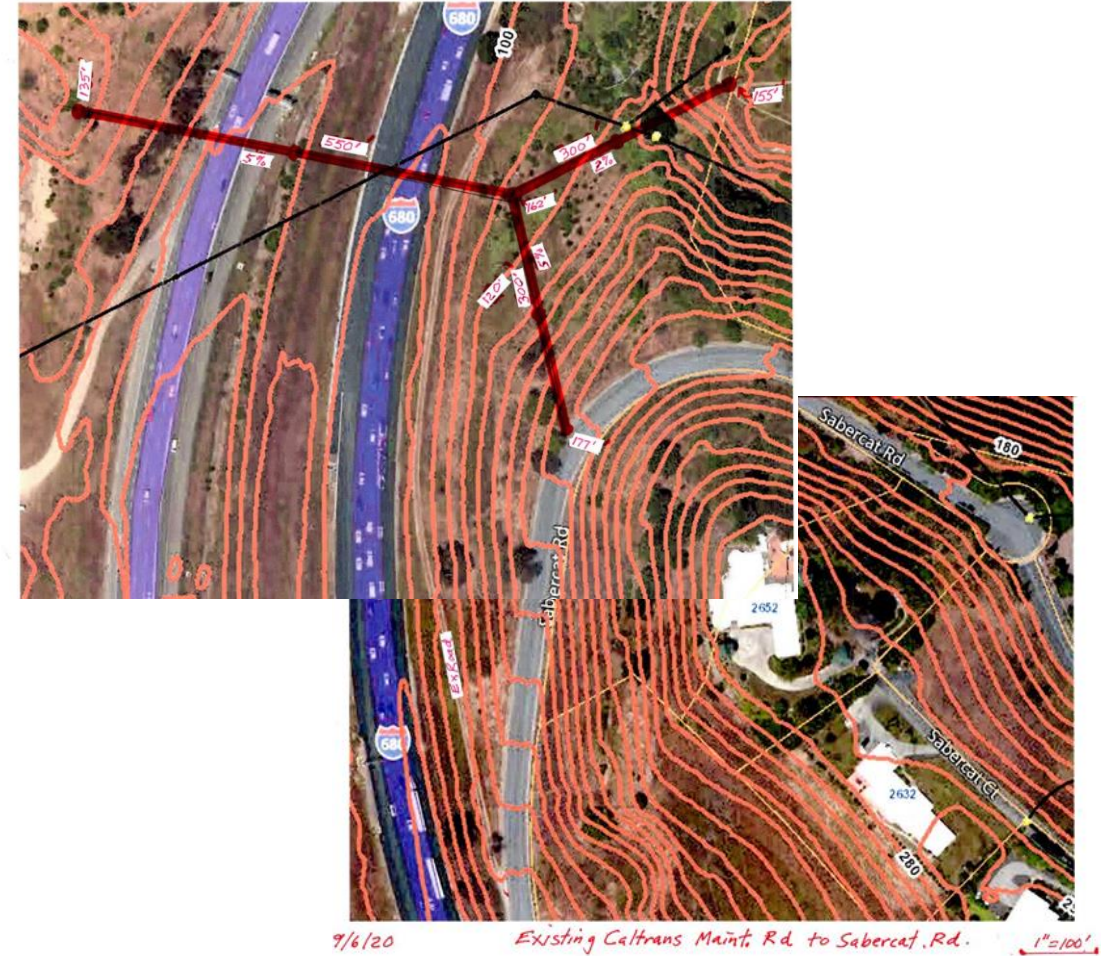


Example Cross Sections to Improve the Trail to Class 1 Path standards

COMMUNITY INPUT ON ALIGNMENT



Option 1: 500-foot Bridge



Option 2: 1,150-foot Bridge

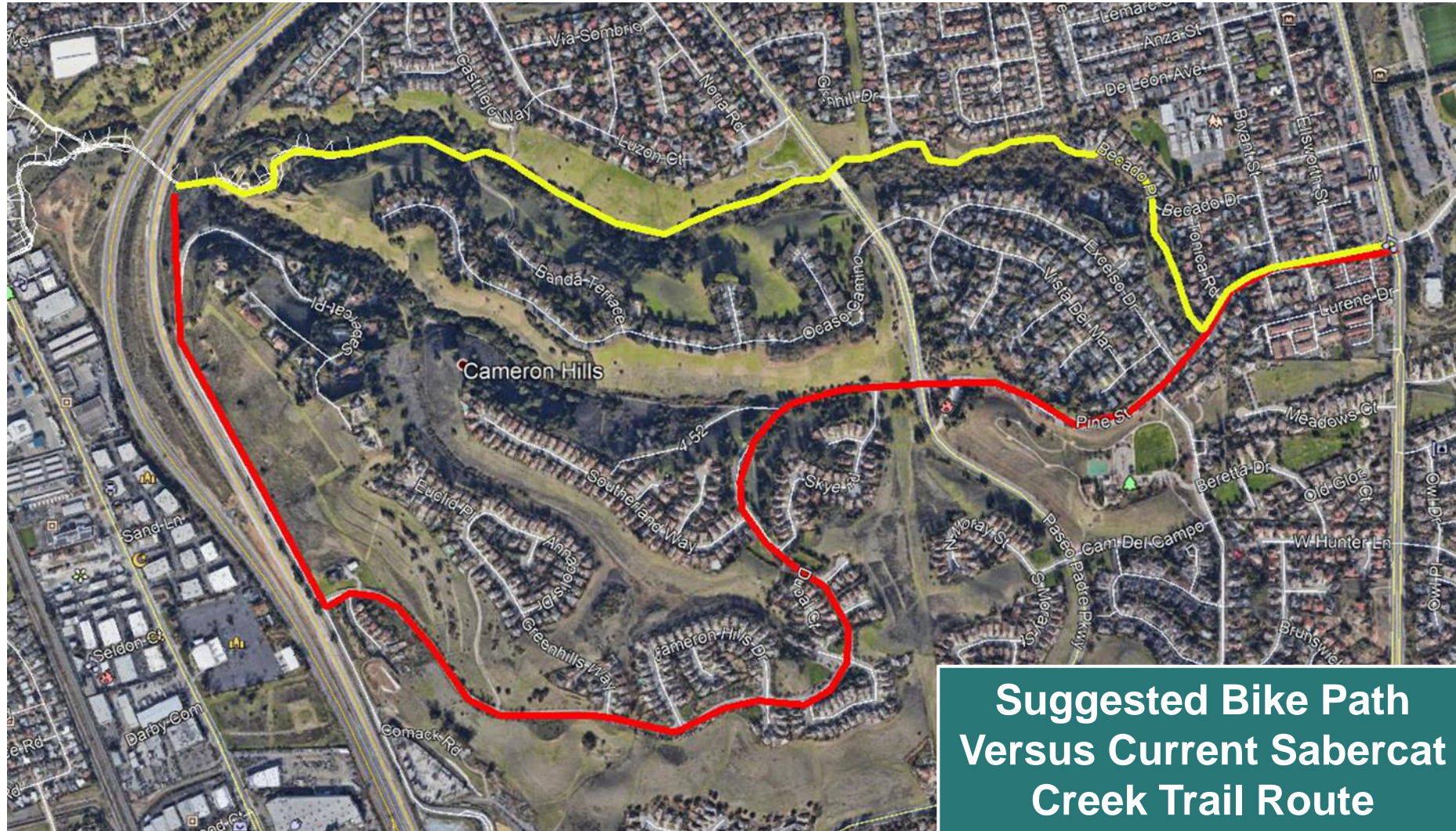
COMMUNITY INPUT ON ALIGNMENT



Suggested Bike Path

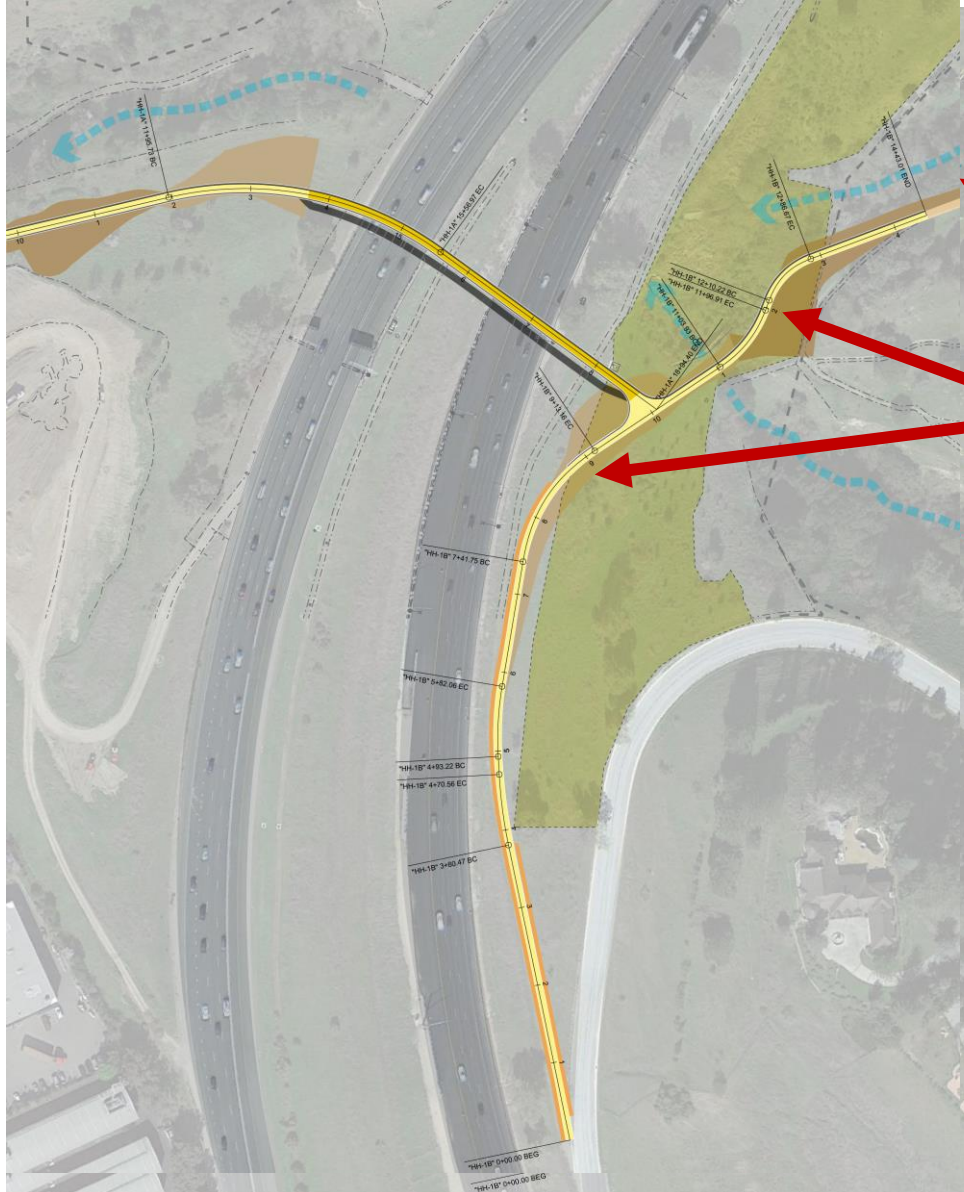


COMMUNITY INPUT ON ALIGNMENT



**Suggested Bike Path
Versus Current Sabercat
Creek Trail Route**

COMMUNITY INPUT ON ALIGNMENT

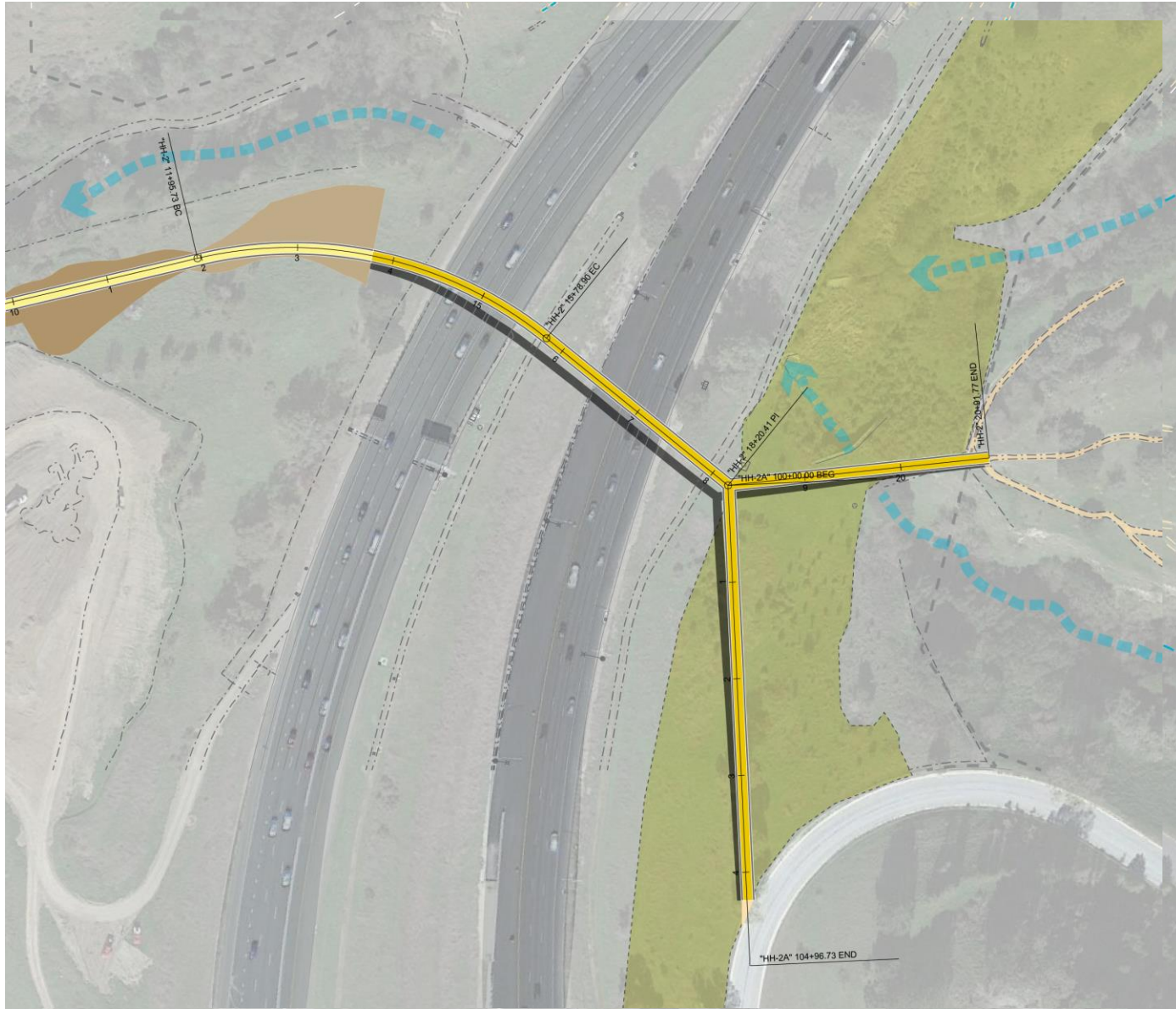


Option 1:

- Potential impacts to pristine riparian habitat
- Permanent impacts to Biological Mitigation Site
- Bicycle route on City Streets 65% longer with steep grades up to 13%
- Difficult to prevent cyclists from using Park route
- Bike Route on Sabercat Road and west end of Pine Street not included in City Bicycle Master Plan



COMMUNITY INPUT ON ALIGNMENT



Option 2:

- Bicycle route on City Streets 65% longer with steep grades up to 13%
- Difficult to prevent cyclists from using Park route
- Bike Route on Sabercat Road and west end of Pine Street not included in City Bicycle Master Plan
- Higher construction cost



SAFETY AND SECURITY COMMENTS



Safety Issues	City Design and Operational Considerations
Pedestrian Safety	<ul style="list-style-type: none"> Existing trail will meet trail safety guidelines prior to opening trail extension
Crime	<ul style="list-style-type: none"> Clearly post limited hours of park use Crime prevention through environmental design (vegetation management/ plantings/ increased visibility) Motion sensory triggered lighting/ surveillance cameras
Homeless Encampments	<ul style="list-style-type: none"> Design the environment to discourage settlement along the trail Design path access points to avoid shopping cart access Actively redirect homeless to alternative living options: https://fremont.gov/3226/Report-Homeless-Concerns
Fire Risks	<ul style="list-style-type: none"> Prepared to respond to natural and man-made incidents Improved trails will increase number access points and response time Continue goat grazing to reduce underbrush and grasses (reduce fuel load)



PROJECT UPDATES



1. BART/ UPRR Overhead Crossing at Blacow

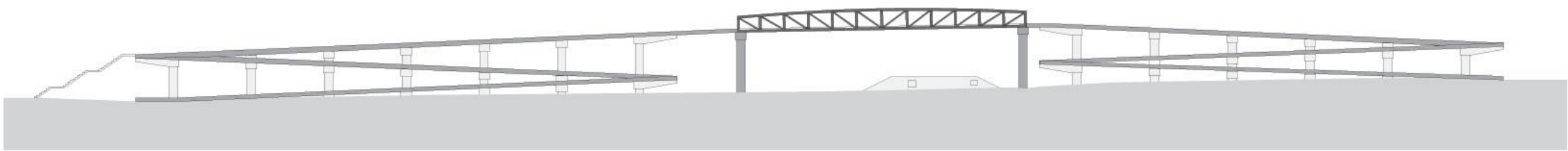
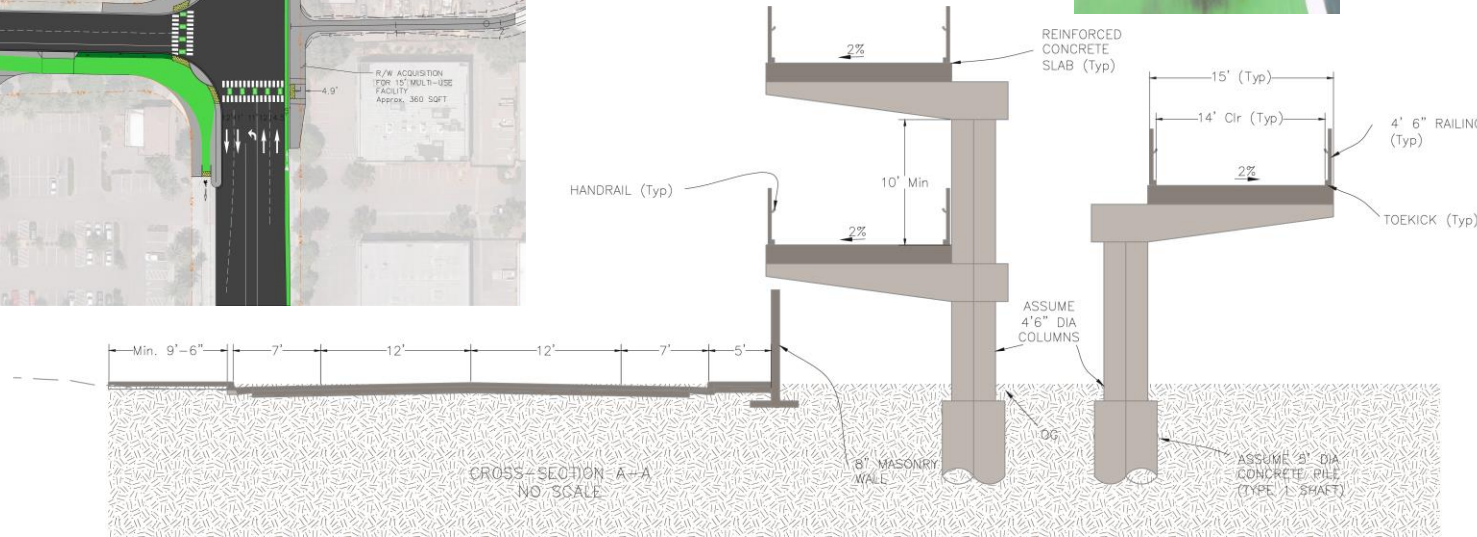
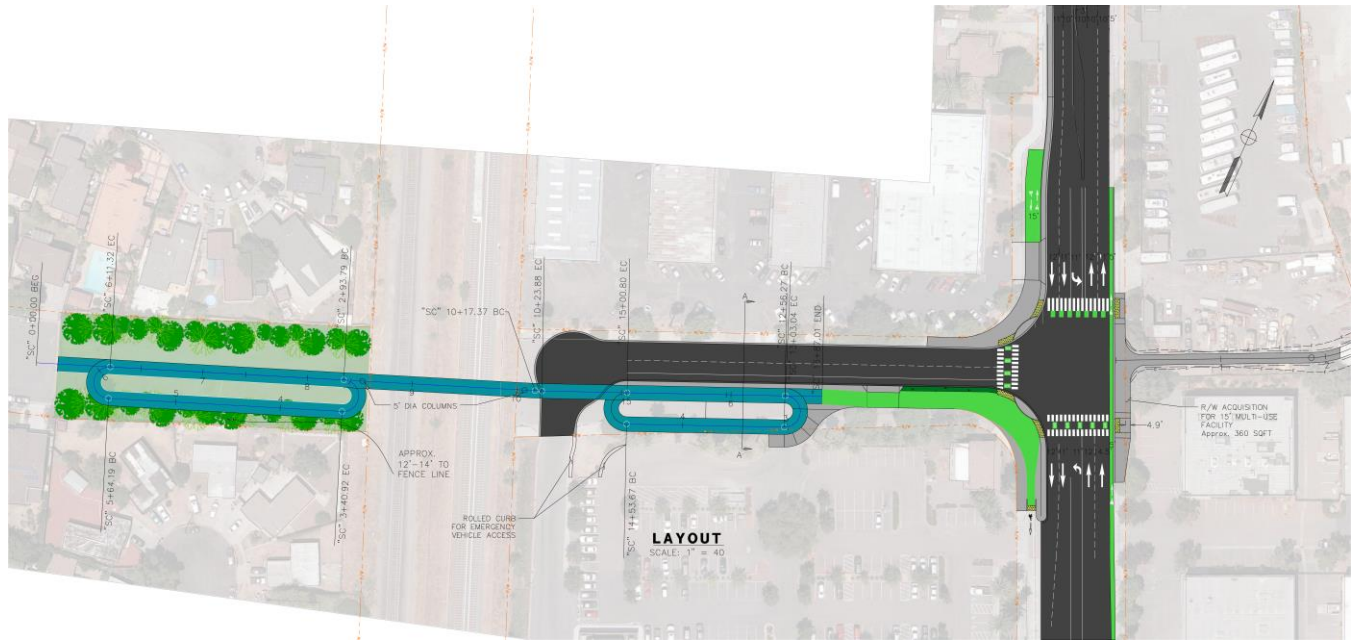


2. I-680 Overcrossing Bridge Design



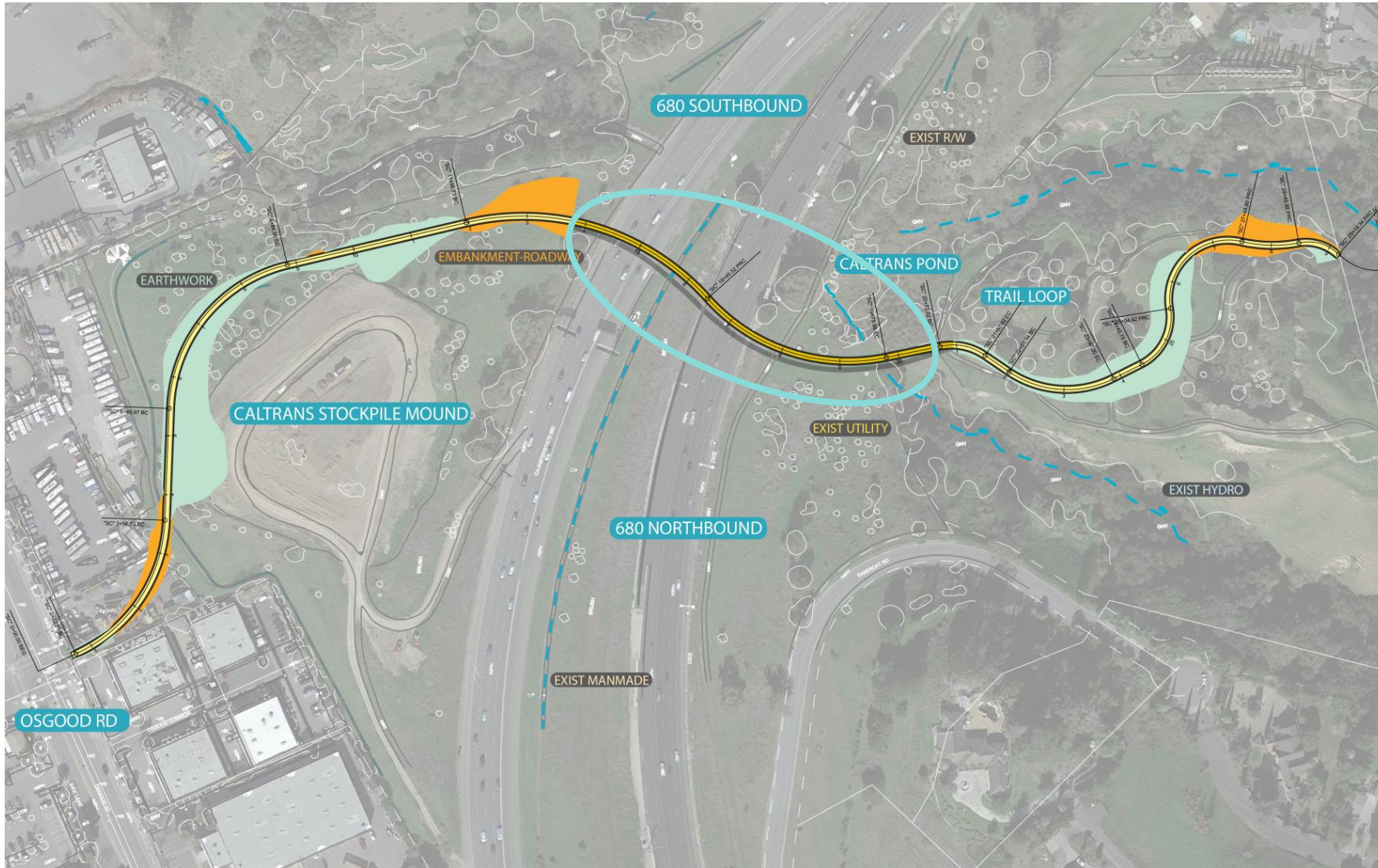
BART/ UPRR CORRIDOR OVERHEAD BLACOW

UPRR/BART OVERHEAD BRIDGE



I-680 BICYCLE / PEDESTRIAN OVERCROSSING

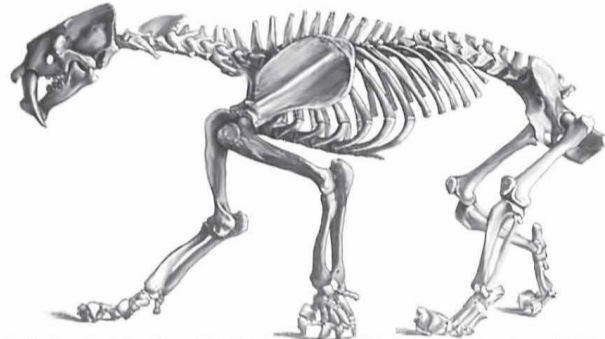
I-680 BIKE/PED OVERCROSSING



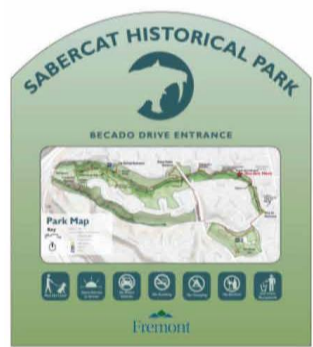
POTENTIAL THEMES TO CONSIDER



SABERCAT



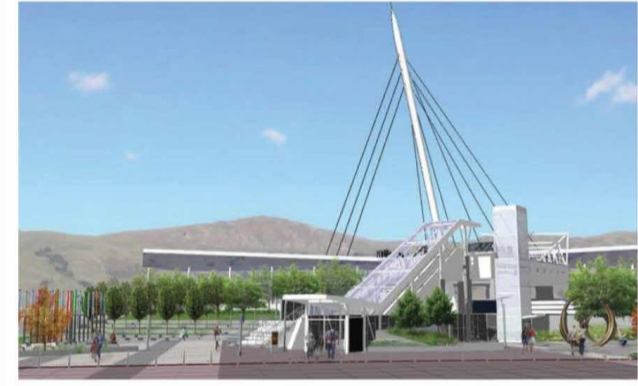
Smilodon drawing from the Prof. Jesse Earl Hyde Collection circa 1890s.



NATURAL



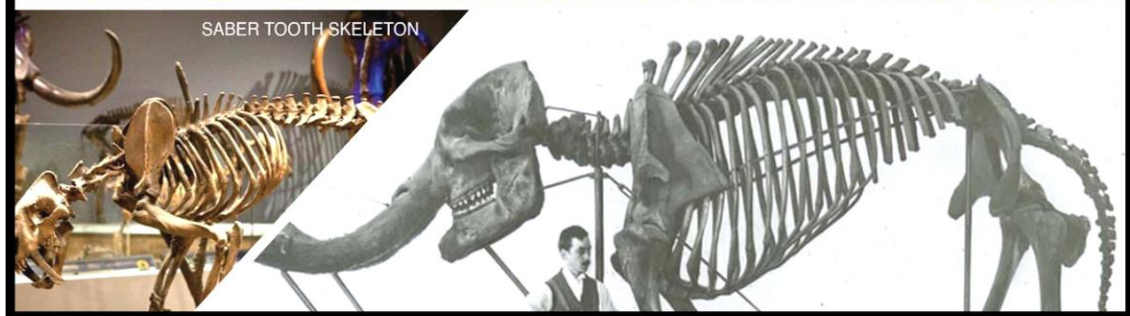
MODERN



I-680 BIKE/PED OVERCROSSING FEEDBACK



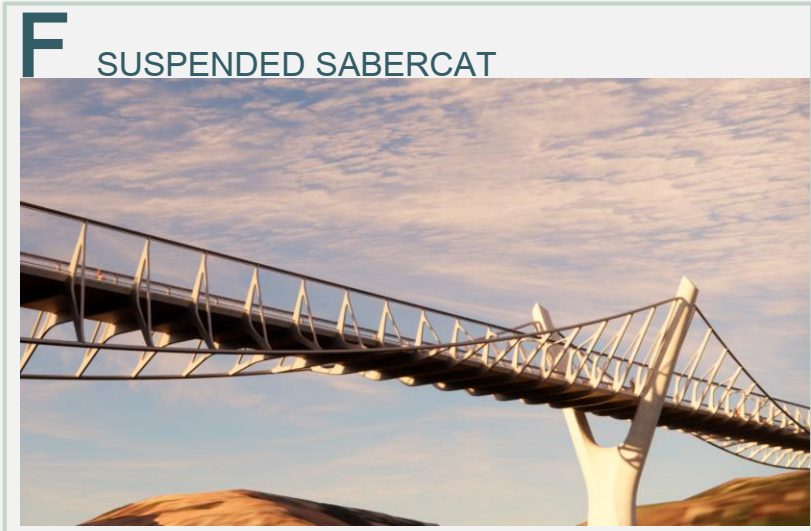
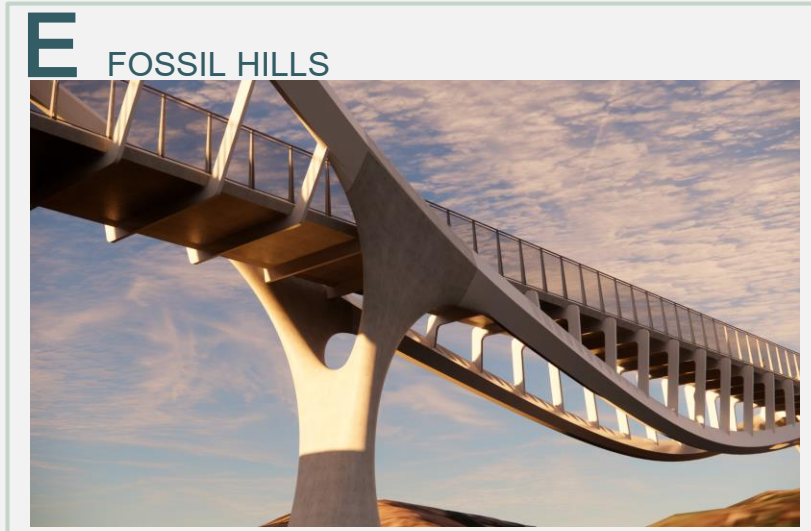
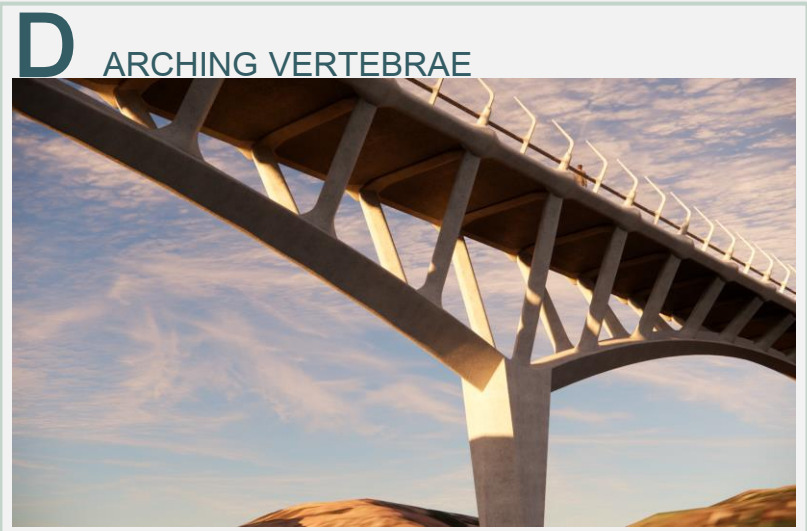
- Modern, unique, but do not block views
- Celebrate the natural setting
- **Themes:**
 - Integrate with the natural setting
 - Draw from the paleontological inspirations
 - Integrate cultural heritage



6 CONCEPTS

- A - FLOW
- B - FLOW SPINE
- C - HAUNCHED RIBS
- D - ARCHING VERTEBRAE
- E - FOSSIL HILLS
- F - SUSPENDED SABERCAT

I-680 BIKE/PED OVERCROSSING DESIGNS



B – FLOW SPINE



B FLOW SPINE

View 6 ₃₇ Below



B FLOW SPINE

View 2 : I-680 Looking North



B FLOW SPINE

View 4 : Deck



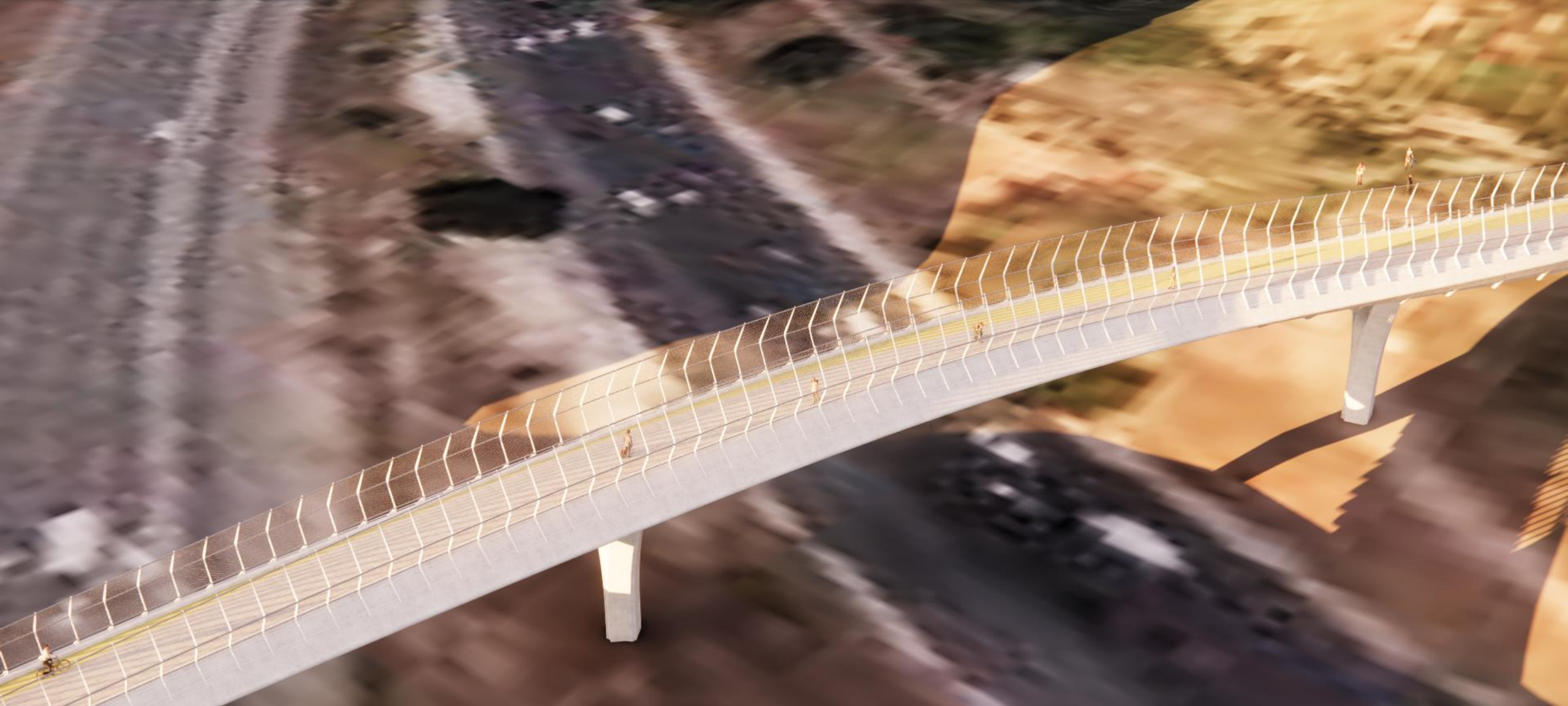
B FLOW SPINE

SABERCAT TRAIL EXTENSION

I-680 BIKE/PED OVERCROSSING CONCEPTS

View 5 : Deck Span

T.Y. LIN INTERNATIONAL | CITY OF FREMONT



B FLOW SPINE

SABERCAT TRAIL EXTENSION

I-680 BIKE/PED OVERCROSSING CONCEPTS

T.Y. LIN INTERNATIONAL | CITY OF FREMONT

View 7 : Aerial

ENVIRONMENTAL REVIEW



NATURAL ENVIRONMENT	HUMAN/ BUILT ENVIRONMENT	ADDITIONAL RESOURCES
<p>CRITICAL HABITAT</p> <p>WILDLIFE SPECIES</p> <p>WATER QUALITY/ DRAINAGE</p> <p>PALEONTOLOGICAL RESOURCES</p>	<p>TRANSPORTATION</p> <p>COMMUNITY IMPACTS</p> <p>LAND USE</p> <p>CONSISTENCY WITH EXISTING PLANS</p> <p>VISUAL IMPACTS</p> <p>NOISE</p>	<p>HAZARDOUS MATERIALS</p> <p>AIR QUALITY/ GREENHOUSE EMISSIONS</p> <p>CULTURAL RESOURCES – (ARCHEAOLOGICAL AND HISTORIC RESOURCES)</p>



OPPORTUNITIES FOR INPUT



EARLY INPUT: INFLUENCE PROJECT DEVELOPMENT	PROJECT REVIEW AND INPUT	CEQA: ENVIRONMENTAL REVIEW
<p><i>COLLECTING INPUT THROUGH JULY 10th, 2020</i></p> <p>Collecting your comments during this meeting</p> <p>Additionally, we will collect comments via survey, email and or handwritten comments</p>	<p><i>REVIEWING PROJECT ELEMENTS, Fall 2020 & Spring 2021</i></p> <ul style="list-style-type: none"> • Provide your reflections on proposed design concepts • Sign-up for Project updates • Visit Website for Project input opportunities – email or mail 	<p><i>Summer 2021</i></p> <ol style="list-style-type: none"> 1. Environmental Document will be posted and available for 30-day review 2. Provide comments to City Council before making decision on Project

COMPLETE



YOUR INPUT IS IMPORTANT – JUNE 16TH



Valuable Input:



1. Comments about the Project purpose or Project objectives



2. Describe what and why you like or dislike some of the project concepts?



3. Please provide specific site information or environmental issues regarding this Project



Review this presentation on:

<http://www.fremont.gov/SabercatBicyclePedestrianTrail>

THEN...

Email your comments:

SabercatProject@fremont.gov

Or mail your comments to:

**Public Works Department
Engineering Division
39550 Liberty Street
Fremont, CA 94538**

THANK YOU!



SABERCAT TRAIL EXTENSION PROJECT

Live Web Public Meeting

June 2, 2021

6:30 p.m. – 8:00 p.m.

