

Ardenwood Elementary School

Existing Conditions Summary

December 2016

Prepared by Alta Planning + Design

Ardenwood Elementary School

A Traffic Safety Assessment was conducted at Ardenwood Elementary School during the morning arrival on Tuesday, October 11, 2016. The assessment was attended by representatives from the City of Fremont, Fremont Police Department, Alta Planning + Design, and Ardenwood Elementary, staff and parents.

School Information

Address	33955 Emilia Lane
Morning Bell(s)	8:20am
Afternoon Bell(s)	2:50pm
Grade Levels	Grades K-6
Enrollment	1,010

Ardenwood Elementary is bordered by MacBeth Ave and Emilia Lane in a residential neighborhood. The school is directly adjacent to Deep Creek Park. The main drop-off loop is accessed on Emilia Lane on the northwest side of the school, and a secondary drop-off loop is located on the south side of the school at the corner of MacBeth Ave and Emilia Ln.

Existing Conditions

The following existing conditions were observed or reported by participants during the walk audit.

1. Emilia Lane

- ◆ Cars back-up along Emilia Lane to enter the drop-off loop. This is also a conflict point due to cars coming from Rodrigo Court and both directions on Emilia Lane.
- ◆ Most parents drop-off along Emilia Lane and cross at Othello Drive, but some cross between Othello Drive and Rodrigo Court. Currently, the next crosswalk that exists on Emilia Ln is not until Lodovico Court.
- ◆ Drivers make U-turns at Emilia Ln & Rodrigo Ct.

2. MacBeth Ave & Emilia Lane Drop-Off

- ◆ Drop-off in the loop and along MacBeth Ave or Emilia Lane (south of Lodovico Court) runs fairly smoothly with not too much congestion.
- ◆ Most people use the crosswalk on Lodovico Court to cross.

3. MacBeth Ave

- ◆ There is one crossing guard at Mac Beth Ave & Frederick Road.
- ◆ Speeding on MacBeth Ave is a concern, despite the presence of a speed hump.

4. MacBeth Ave & Deep Creek Road

- ◆ The intersection is stop sign controlled crossing Emilia Lane, and uncontrolled at Deep Creek Road
- ◆ The intersection has a high pedestrian crossing volume.
- ◆ There is one crossing guard at this location.

5. Deep Creek Road

- ◆ Speeding on Deep Creek Drive is a concern.
- ◆ Parking is available on Deep Creek Road, but it is underutilized.

6. Deep Creek Road & Emilia Lane

- ◆ The intersection is stop sign controlled crossing Emilia Lane, and uncontrolled at Deep Creek Road
- ◆ Right turns from Emilia Lane onto Deep Creek Drive in the primary movement at this intersection. Cars often speed through the intersection.
- ◆ There is currently no crossing guard at this location.

7. Additional Observations

- ◆ Some students were observed to be bicycling without wearing a helmet.
- ◆ School staff expressed interest in hosting activities in Deep Creek Park and other strategies to encourage students to get dropped-off on Deep Creek Road and use the walking path through the park to access the school.

8. Current Safe Routes to School Involvement

- ◆ Ardenwood Elementary has been in the Alameda County SR2S program since 2013 and participates in the three countywide events: International Walk & Roll to School Day, Golden Sneaker Contest, and Bike to School Day. The school has also found a parent volunteer to be a crossing guard, further improving the safety of students walking and biking to school.
- ◆ According to student travel tallies collected in spring 2016, approximately 28% of students walk to school and 4% bike. Approximately 25% of students participate in a carpool to school, which is higher than typical for carpooling.

Recommendations

Recommendations to improve infrastructure or operations surrounding Ardenwood Elementary can be seen on the conceptual improvement plan found on the following page. Engineering cost estimates for the infrastructure recommendations are also provided.

The following improvements are recommendations for policy and program implementation at Ardenwood Elementary School to increase safety and active commutes to school.

Policy & Program Recommendations

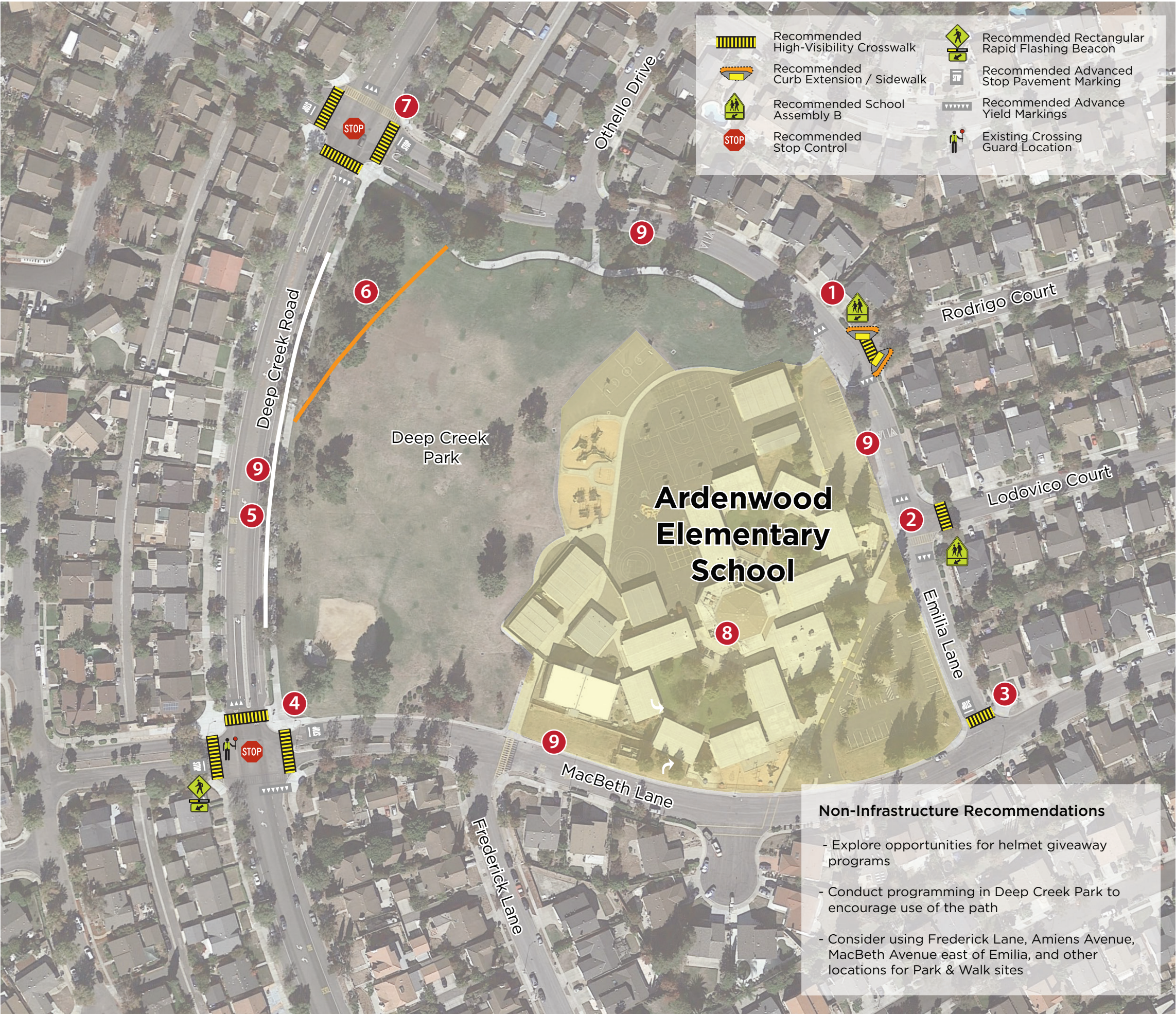
- ◆ Distribute Recommended Walk/Bike Maps to students and their families in an effort to promote walking and biking to school on suggested routes. Safety tips are also included on the maps to promote good behavior among bicyclists, pedestrians, and drivers.
- ◆ Promote use of Deep Creek Park to encourage use of walking path.
- ◆ Consider using Amiens Ave and other locations where parking is underutilized for Park & Walk sites.
- ◆ Participate in SR2S events, such as International Walk & Roll to School Day, the Golden Sneaker Contest, and Bike to School Day.
- ◆ Provide age-appropriate pedestrian and bicycle safety education to students, either during class or as an after school activity.
- ◆ Participate in SR2S evaluations each fall and spring to monitor progress on mode shift goals.
- ◆ The Fremont Unified School District should consider adopting a Safe Routes to School Board Policy and Administrative Regulation that recognizes the benefits of SR2S programs, promotes inter-agency collaboration, encourages bicycle and pedestrian safety education at schools, and encourages schools to participate in SR2S evaluations each fall and spring.
- ◆ Explore program and funding opportunities for helmet giveaways.

Ardenwood Elementary School Fremont

Safe Routes to Schools Improvement Plan

Site Assessment held October 2016

- 1 Emilia Lane / Rodrigo Court**
 - Install high visibility crosswalks, advance yield teeth and School Crosswalk Warning Assembly B signage.
 - Consider installing curb extensions on northeast and southeast corners
- 2 Emilia Lane / Lodovico Court**
 - Install high visibility crosswalk, advance yield teeth and School Crosswalk Warning Assembly B signage
- 3 MacBeth Avenue / Emilia Lane**
 - Install yellow high visibility crosswalk at north leg
- 4 Deep Creek Road / MacBeth Avenue**
 - Consider converting intersection to an all-way stop
 - Install high visibility crosswalks and advance stop bars where shown
 - Conduct study for potential Rectangular Rapid Flashing Beacon (RRFB) at intersection
- 5 Deep Creek Road Drop-off Zone**
 - Consider designating Deep Creek Road between MacBeth Avenue and Emilia Lane as a drop-off zone.
 - Consider installing courtesy strips to provide path from street to sidewalk
- 6 Path through Deep Creek Park**
 - Consider installing a path to connect Deep Creek Road to the existing path in Deep Creek Park to provide a more direct route for walking or biking to Ardenwood Elementary
- 7 Deep Creek Road / Emilia Lane**
 - Consider converting intersection to an all-way stop
 - Install high visibility crosswalks and advance stop bars
 - Conduct study for potential RRFB at intersection
- 8 On-Campus**
 - Evaluate needs for on-site bike racks and pursue grants/funds for secure bike parking facilities
- 9 School Frontage**
 - Consider installation of "No Parking" signage along the entire school frontage



The above items are recommendations only and based on Safe Routes to Schools site assessment best practices. Feasibility determination, final design, accessibility, funding, and implementation of any recommended improvements is the responsibility of the appropriate governing agency.

Improvements not to scale



Fremont School Traffic Safety Assessment
Ardenwood Elementary School
Preliminary Cost Estimate

Alta Planning + Design

12/20/2016

Traffic Safety Improvements

ITEM NO.	DESCRIPTION	ESTIMATED QUANTITY	UNIT	UNIT COST	COST
1	Mobilization	1	LS	\$20,900	\$21,000
2	Traffic Control	1	LS	\$20,900	\$20,900
3	High Visibility Crosswalk	11	EA	\$2,000	\$22,000
4	Curb Extension & Ramp	2	EA	\$20,000	\$40,000
5	Bike/Ped Access Improvement	1	EA	\$6,000	\$6,000
6	Yield Line	10	EA	\$500	\$5,000
7	Sign and Post Assembly	11	EA	\$500	\$5,500
8	STOP Bar and Pavement Marking	7	EA	\$400	\$2,800
9	Multi-Use Path	4,200	SF	\$10	\$42,000
10	All Way Stop Intersection and Study	1	LS	\$6,000	\$6,000
11	Rectangular Rapid Flashing Beacon (RRFB) and Study	2	LS	\$40,000	\$80,000
SubTotal Items					\$251,200
CONSTRUCTION CONTINGENCY				20%	\$50,200
Total					\$301,400

