

Warm Springs Elementary School Existing Conditions Summary

December 2016

Prepared by Alta Planning + Design

Warm Springs Elementary School

A Traffic Safety Assessment was conducted at Warm Springs Elementary School during the morning arrival on Wednesday, November 9, 2016. The assessment was attended by representatives from the City of Fremont, Fremont Police Department, Alta Planning + Design, and Warm Springs Elementary staff and parents.

School Information

Address	47370 Warm Springs Boulevard
Morning Bell(s)	8:10am
Afternoon Bell(s)	Third Grade: 2:30pm Fourth, Fifth, & Sixth Grades: 2:45pm
Grade Levels	Grades 3-6
Enrollment	886

Warm Springs Elementary is located on Warm Springs Boulevard, a major arterial through the City. The school's longest street frontage is along Pontiac Way on its northern border. The back of the school is along Fernald Street on its east side. Warm Spring's valet drop-off loop is accessible via Fortner Street on the south side. The school is surrounded by houses on three sides and office parks on the opposite side of Warm Springs Boulevard. James Leitch Elementary (K-2) is about 1,000 feet away down Fernald Street.

Existing Conditions

The following existing conditions were observed or reported by participants during the walk audit.

1. Valet Drop-off Loop

- ◆ The school has a "valet" drop-off loop that circles a small parking lot accessible from Fortner Street. Fortner dead ends into the parking lot.
- ◆ The drop-off loop generally flows adequately, but turning onto and off of Fortner Street is where the backups occurs. To avoid this backup, some parents will drop their kid(s) off further south along Fortner and then U-turn to leave.
- ◆ When exiting the parking lot, cars are only allowed to make a southbound-right from Fortner onto Lippert; however, some cars continue straight on Fortner or make a left on to Lippert, further adding to the backup and delay.

2. Warm Springs Boulevard

- ◆ Along this stretch of Warm Springs Boulevard, there is a striped bike lane against the curb. No stopping is allowed along the curb at any time.
- ◆ Despite the bike lane and the "No Stopping" signage, some cars pull over to the curb to drop off their child, blocking the bike lane and partially blocking the right travel lane.

3. Warm Springs Blvd and Lippert Avenue

- ◆ Warm Springs Blvd and Lippert Ave is a four-way signalized intersection. Cars traveling southbound on Warm Springs Blvd turn left onto Lippert Ave to gain access to the valet drop-off area.
- ◆ The current signal timing of this intersection only allows two or three cars to turn per cycle. During drop-off and pick-up times, this turn pocket can fill quickly, but may take multiple cycles to empty.

4. Pontiac Way and Javalina Road

- ◆ Pontiac Way is the second primary drop-off area for Warm Springs Elementary. There is both a bus zone and curbside drop-off area on the south side of Pontiac.
- ◆ There are two speed lumps along Pontiac and during assembly and dismissal times, the school places “No U-turn” signs along the double yellow.
- ◆ 140 feet east of Warm Springs Boulevard is the T-intersection of Javalina and Pontiac. Many parents drop-off their kids along Javalina Road (Quinalt Way & Chama Way too) and have them cross Pontiac to access the school. There is a volunteer parent crossing guard stationed here for morning drop off only.
- ◆ During assembly and dismissal times, the volume of pedestrian traffic crossing Pontiac from Javalina is very high.
- ◆ The drop-off zone along Pontiac is very well used.
- ◆ Only one school bus currently serves Warm Springs Elementary, but the bus zone is considerably longer than what one school bus needs.
- ◆ On Javalina and the other side streets, vehicle violations were observed: double parking, parking on the wrong side of the street, and making mid-block U-turns among others.

5. Fernald Street and Pontiac Way

- ◆ From the parent survey data, the intersection of Fernald and Pontiac was the single most-mentioned topic, getting more than double the amount of comments compared to any other topic.
- ◆ Many parents believe that this is one of the most dangerous intersections in the area. It is a T-intersection and only traffic turning from Pontiac has a stop. There are two transverse crosswalks currently here. Eastbound left turns onto Fernald are popular at this intersection as some parents also have children at Leitch to drop-off.
- ◆ Given that it is the only stop-controlled leg of the intersection, cars wishing to turn left onto Fernald can back up on Pontiac.

6. Fernald Street

- ◆ Warm Springs Elementary has additional street frontage along Fernald. The drop-off space here is underutilized compared to the other three drop-off locations.
- ◆ Some parents were concerned about cars speeding along Fernald.
- ◆ There is a speed feedback sign along Fernald for northbound traffic.

7. Additional Observations

- ◆ Warm Springs currently has limited bike parking on campus near the valet drop-off area/parking lot.
- ◆ Parents also reported speeding in the area of Booster Park by Fortner and Gable Drive.

8. Current Safe Routes to School Involvement

- ◆ Warm Springs joined the Countywide SR2S program in Fall 2015 and has participated in International Walk and Roll to School Day and regular Walk and Roll Events. Warm Springs usually coordinates with Leitch Elementary for these events.
- ◆ Based on parent survey data, about 22% of students carpool to school.

Recommendations

Recommendations to improve infrastructure or operations surrounding Warm Springs Elementary can be seen on the conceptual improvement plan found on the following page. Engineering cost estimates for the infrastructure recommendations are also provided.

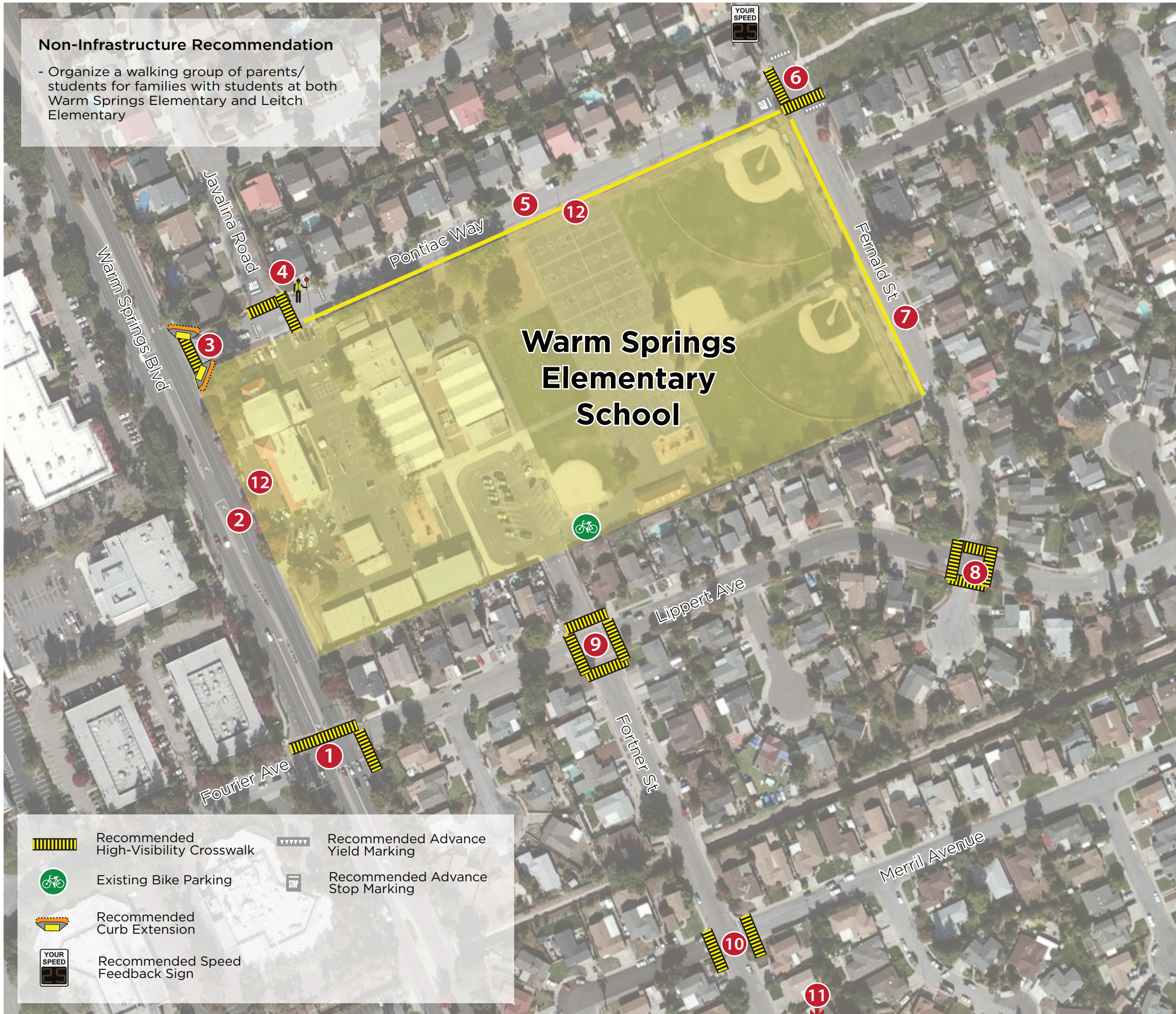
The following improvements are recommendations for policy and program implementation at Warm Springs Elementary School to increase safety and active commutes to school.

Policy & Program Recommendations

- ◆ Distribute Recommended Walk/ Bike Maps to students and their families in an effort to promote walking and biking to school on suggested routes. Safety tips are also included on these maps to promote good behavior among bicyclists, pedestrians, and drivers. SR2S resources would be very useful in creating these documents.
- ◆ Participate in more SR2S events, including Bike Rodeos, Pedestrian Safety Rodeos, and the Rock the Block Assembly.
- ◆ Participate in SR2S evaluations each fall and spring to monitor progress on mode shift goals.
- ◆ If only one school bus will continue to serve Warm Springs Elementary, shorten the bus loading zone to increase space available for other vehicle drop-offs. Consider moving the bus stop to Fernald Street and having students access campus via the baseball fields.
- ◆ Send regular reminders to parents regarding the drop-off and pick-up location options and encourage parents to use the relatively underutilized drop-off space along Fernald Street.
- ◆ Warm Springs Elementary should continue to partner with Leitch Elementary and develop a walking group for parents for who have children at both schools.
- ◆ The Fremont Unified School District should consider adopting a Safe Routes to School Board Policy and Administrative Regulation that recognizes the benefits of SR2S programs, promotes inter-agency collaboration, encourages bicycle and pedestrian safety education at schools, and encourages schools to participate in SR2S evaluations each fall and spring.
- ◆ Work with parents to connect them with others who live nearby to increase the number of students carpooling, which may reduce the number of vehicles coming to campus. Similarly, Walking School Buses and Bike Trains can be established with the same type of coordination.

Non-Infrastructure Recommendation

- Organize a walking group of parents/ students for families with students at both Warm Springs Elementary and Leitch Elementary



**Warm Springs Elementary School
Fremont**

Safe Routes to Schools Improvement Plan

Site Assessment held November 2016

- 1 Warm Springs Blvd / Fourier Ave-Lippert Ave**
- Adjust traffic signal timing to better accommodate peak school travel
- Install high visibility crosswalks on north and east legs
- 2 Warm Springs Blvd (school frontage)**
- Install No Stopping signs and paint red curb along school frontage
- 3 Warm Springs Blvd / Pontiac Way**
- Install high visibility crosswalk on Pontiac Way
- 4 Pontiac Way / Javalina Road**
- Install high visibility crosswalks on north and east legs
- Consider providing a crossing guard for both arrival and dismissal times
- 5 Pontiac Way**
- Shorten loading zone for busses or relocate loading zone behind the baseball fields on Fernald Street
- Update loading zone time to 7:30AM - 3:30PM
- Consider widening sidewalk adjacent to school
- 6 Pontiac Way/ Fernald St**
- Install high visibility crosswalks on south and west legs
- Consider raised crosswalk on Fernald St
- Consider conducting stop sign warrant analysis at intersection
- Consider installing a speed feedback sign for SB traffic
- Consider providing a crossing guard for both arrival and dismissal times
- Consider widening sidewalk at school frontage
- 7 Fernald St**
- Promote as alternate drop-off/pick-up location
- Consider designating Fernald St as loading zone during school arrival and dismissal times
- 8 Lippert Ave / Fernald St**
- Install high visibility yellow crosswalk on all legs
- 9 Lippert Ave / Fortner St**
- Install high visibility crosswalks on all legs
- Prohibit southbound through and left turn movements with flexible bollards or cones
- 10 Fortner St / Merrill Ave**
- Install high visibility crosswalks on east and west legs
- 11 Fortner St / Gable Dr**
- Consider conducting stop sign warrant analysis at intersection
- 12 School Frontage / Pontiac Way / Warm Springs Boulevard**
- Conduct an inventory of existing parking and loading signage and clean up / remove conflicting signage

Improvements not to scale



The above items are recommendations only and based on Safe Routes to Schools site assessment best practices. Feasibility determination, final design, accessibility, funding, and implementation of any recommended improvements is the responsibility of the appropriate governing agency.

Fremont School Traffic Safety Assessment
Warm Springs Elementary
Preliminary Cost Estimate

Alta Planning + Design

12/20/2016

Traffic Safety Improvements

ITEM NO.	DESCRIPTION	ESTIMATED QUANTITY	UNIT	UNIT COST	COST	
1	Mobilization	1	LS	\$33,100	\$33,000	
2	Traffic Control	1	LS	\$33,100	\$33,100	
3	High Visibility Crosswalk	16	EA	\$2,000	\$32,000	
4	Curb Extension & Ramp	2	EA	\$20,000	\$40,000	
5	Yield Line	2	EA	\$500	\$1,000	
6	Sign and Post Assembly	5	EA	\$500	\$2,500	
7	STOP Bar and Pavement Marking	16	EA	\$400	\$6,400	
8	All Way Stop Intersection and Study	1	LS	\$6,000	\$6,000	
9	Painted Curb Marking	1	LS	\$3,000	\$3,000	
10	Sidewalk Widening	1	LS	\$125,000	\$125,000	
11	Speed Feedback Sign	1	EA	\$15,000	\$15,000	
12	Channelizers	1	LS	\$500	\$500	
13	Signal Modification (Optional)	1	LS	\$100,000	\$100,000	
SubTotal Items					\$397,500	
				CONSTRUCTION CONTINGENCY	20%	\$79,500
Total					\$477,000	