

Warwick Elementary School Existing Conditions Summary

December 2016

Prepared by Alta Planning + Design

Warwick Elementary School

A Traffic Safety Assessment was conducted at Warwick Elementary School during the afternoon dismissal on Tuesday, October 25, 2016. The assessment was attended by representatives from the City of Fremont, Fremont Police Department, Alta Planning + Design, and Warwick Elementary staff and parents.

School Information

Address	3375 Warwick Road
Morning Bell(s)	8:30am
Afternoon Bell(s)	2:45pm
Grade Levels	Grades K-6
Enrollment	926

Warwick Elementary is located on Warwick Road, in a primarily residential neighborhood that is bordered by Paseo Padre Parkway and Decoto Road, both major streets for through traffic. There are commercial uses to the southwest of the school, adjacent to Fremont Boulevard. The school has a drop-off loop on Warwick Road, with limited parking and a parking lot just south of the drop-off loop. There is one high visibility crosswalk for students to cross Warwick Road and enter the school parking lot.

Existing Conditions

The following existing conditions were observed or reported by participants during the walk audit.

1. Warwick Road

- ◆ The drop-off loop has two lanes, with a crosswalk for pedestrians near entrance of the school. Parking in loop is for staff only.
- ◆ Cars not yielding to pedestrians in the high visibility crosswalk on Warwick Road was observed
- ◆ Some pedestrian visibility issues were observed as pedestrians walked on Warwick Rd

2. Paseo Padre Parkway & Warwick Road

- ◆ Cars are queued up to Paseo Padre Parkway, with some illegal u-turns to find parking
- ◆ Eastbound left turn on green light is same as pedestrian walk signal, potentially causing conflicts or back ups

3. Warwick Road & Bates Drive

- ◆ Cars were observed not yielding to pedestrians at the T-intersection
- ◆ Pedestrians are in a blind spot due to trees and vegetation at southwest corner of Bates and Ferry Lane

4. Darwin Drive & Bridgewater Place

- ◆ There is a crossing guard present at the crosswalk on Darwin Drive that provides back access to the school. The crossing guard increases yield compliance to pedestrians in crosswalk.
- ◆ Cars make u-turns at intersection, causing safety concerns

5. Current Safe Routes to School Involvement

- ◆ Warwick Elementary has been participating in the Alameda County Safe Routes to Schools countywide program since 2014, and has participated in International Walk & Roll to School Day, and received a bike rodeo, BikeMobile visit, and Rock the Block safety assembly.
- ◆ Based on student travel tallies collected in fall 2015, 24% of students walk and 4% bike, while 11% participate in a carpool and 51% are dropped off in a single family vehicle.

Recommendations

Recommendations to improve infrastructure or operations surrounding Warwick Elementary can be seen on the conceptual improvement plan found on the following page. Engineering cost estimates for the infrastructure recommendations are also provided.

The following improvements are recommendations for policy and program implementation at Warwick Elementary School to increase safety and active commutes to school.

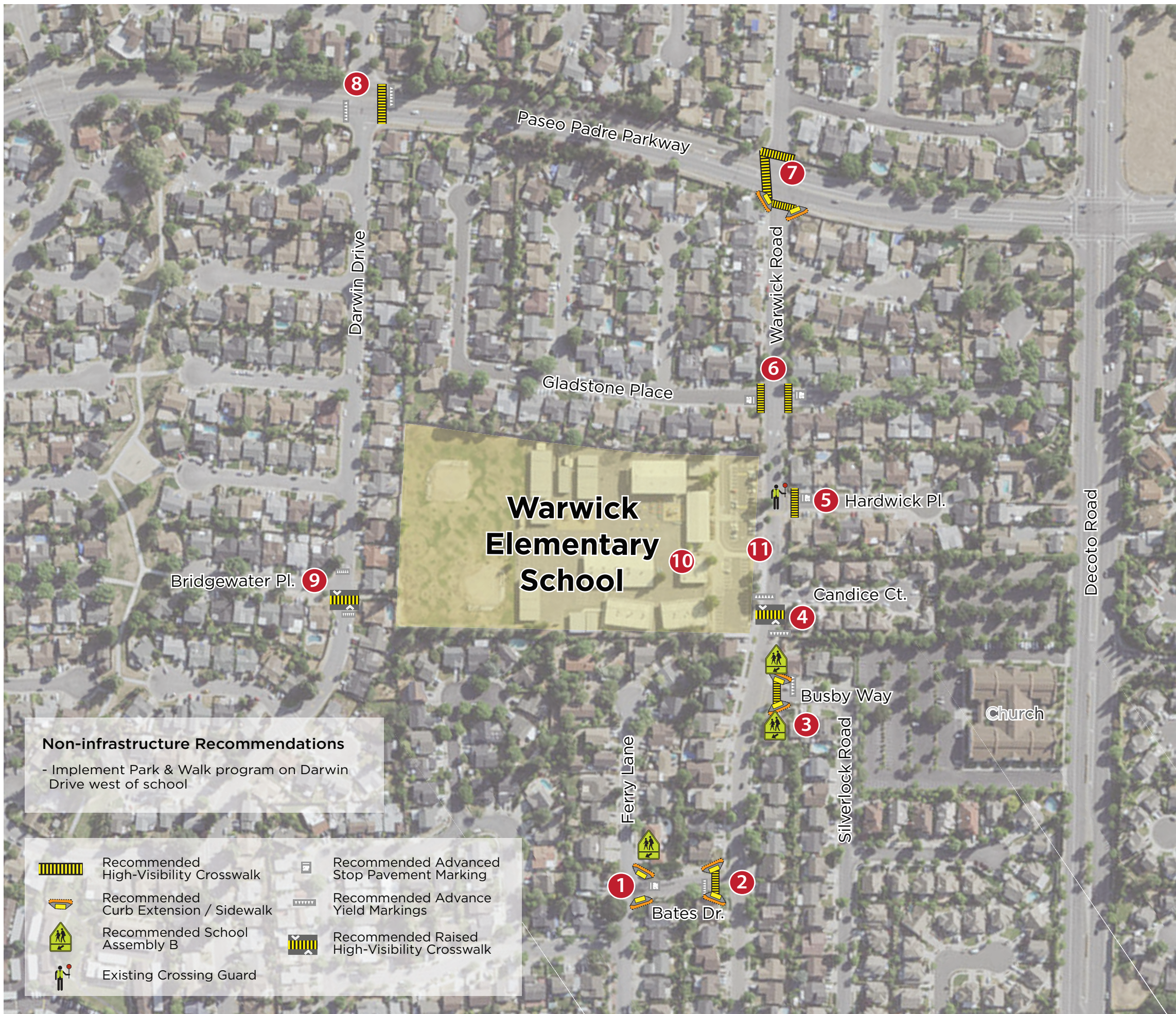
Policy & Program Recommendations

- ◆ Distribute Recommended Walk/Bike Maps to students and their families in an effort to promote walking and biking to school on suggested routes. Safety tips are also included on the maps to promote good behavior among bicyclists, pedestrians, and drivers.
- ◆ Consider promoting Busby Way and church parking lot as Park & Walk sites. The street currently has underutilized parking.
- ◆ Participate in SR2S events, such as International Walk & Roll to School Day, the Golden Sneaker Contest, and Bike to School Day.
- ◆ Provide age-appropriate pedestrian and bicycle safety education to students, either during class or as an after school activity.
- ◆ Participate in SR2S evaluations each fall and spring to monitor progress on mode shift goals.
- ◆ The Fremont Unified School District should consider adopting a Safe Routes to School Board Policy and Administrative Regulation that recognizes the benefits of SR2S programs, promotes inter-agency collaboration, encourages bicycle and pedestrian safety education at schools, and encourages schools to participate in SR2S evaluations each fall and spring.
- ◆ Explore program and funding opportunities for helmet giveaways.

Warwick Elementary School Fremont

Safe Routes to Schools Improvement Plan

Site Assessment held October 2016



- 1 Ferry Lane / Bates Drive**
 - Install curb extensions
 - Consider conducting stop warrant for Bates Dr.
 - Install School Assembly B Sign on approach
- 2 Warwick Road / Bates Drive**
 - Install curb extensions on Bates Dr.
 - Install high visibility crosswalk and yield markings on Bates Dr.
- 3 Warwick Road / Busby Way**
 - Install curb extensions on northeast and southeast corners
 - Install high visibility yellow crosswalk and school crossing assembly B signage on Warwick Road
- 4 Warwick Road / Candice Court**
 - Install C/L cones on Warwick Road to allow only right turns in and out of Candice Court
- 5 Warwick Road / Hardwick Place**
 - Install high visibility crosswalk and stop bar on Hardwick Place
- 6 Warwick Road / Gladstone Place**
 - Install high visibility crosswalks and stop bars on east and west legs
- 7 Warwick Road / Paseo Padre Parkway**
 - Install curb extensions on southeast and southwest corners
 - Install high visibility crosswalks on north, south, and west legs of intersection
- 8 Darwin Drive / Paseo Padre Parkway**
 - Install high visibility crosswalk on east leg of Paseo Padre Parkway
 - Install yield markings on east and west legs
 - Consider installing a Rectangular Rapid Flashing Beacon
- 9 Darwin Drive / Bridgewater Place**
 - Consider installing raised crosswalk on south leg
 - Install yield markings on north and south legs
 - Trim landscaping in area to increase sightlines, visibility, and effectiveness of current lighting
- 10 On-Campus**
 - Evaluate needs for on-site bike racks and pursue grants/funds for secure bike parking facilities
- 11 School Frontage / Warwick Road**
 - Conduct an inventory of existing parking and loading signage and clean up / remove conflicting signage

Improvements not to scale

0 300 ft



Fremont School Traffic Safety Assessment
Warwick Elementary
Preliminary Cost Estimate

Alta Planning + Design

12/20/2016

Traffic Safety Improvements

ITEM NO.	DESCRIPTION	ESTIMATED QUANTITY	UNIT	UNIT COST	COST
1	Mobilization	1	LS	\$28,400	\$28,000
2	Traffic Control	1	LS	\$28,400	\$28,400
3	High Visibility Crosswalk	10	EA	\$2,000	\$20,000
4	Curb Extension & Ramp	8	EA	\$20,000	\$160,000
5	Yield Line	8	EA	\$500	\$4,000
6	Sign and Post Assembly	1	EA	\$500	\$500
7	STOP Bar and Pavement Marking	5	EA	\$400	\$2,000
8	All Way Stop Intersection and Study	1	LS	\$6,000	\$6,000
9	Rectangular Rapid Flashing Beacon (RRFB) and Study	1	LS	\$40,000	\$40,000
10	Trim Landscaping	1	LS	\$1,200	\$1,200
11	Raised Crosswalk (High Visibility Crosswalk)	2	EA	\$25,000	\$50,000
SubTotal Items					\$340,100
CONSTRUCTION CONTINGENCY				20%	\$68,000
Total					\$408,100



PROJECT	Fremont School Traffic Safety Assessments
SUBJECT	Warwick Elementary School
DATE	October 25, 2016

[illegible]