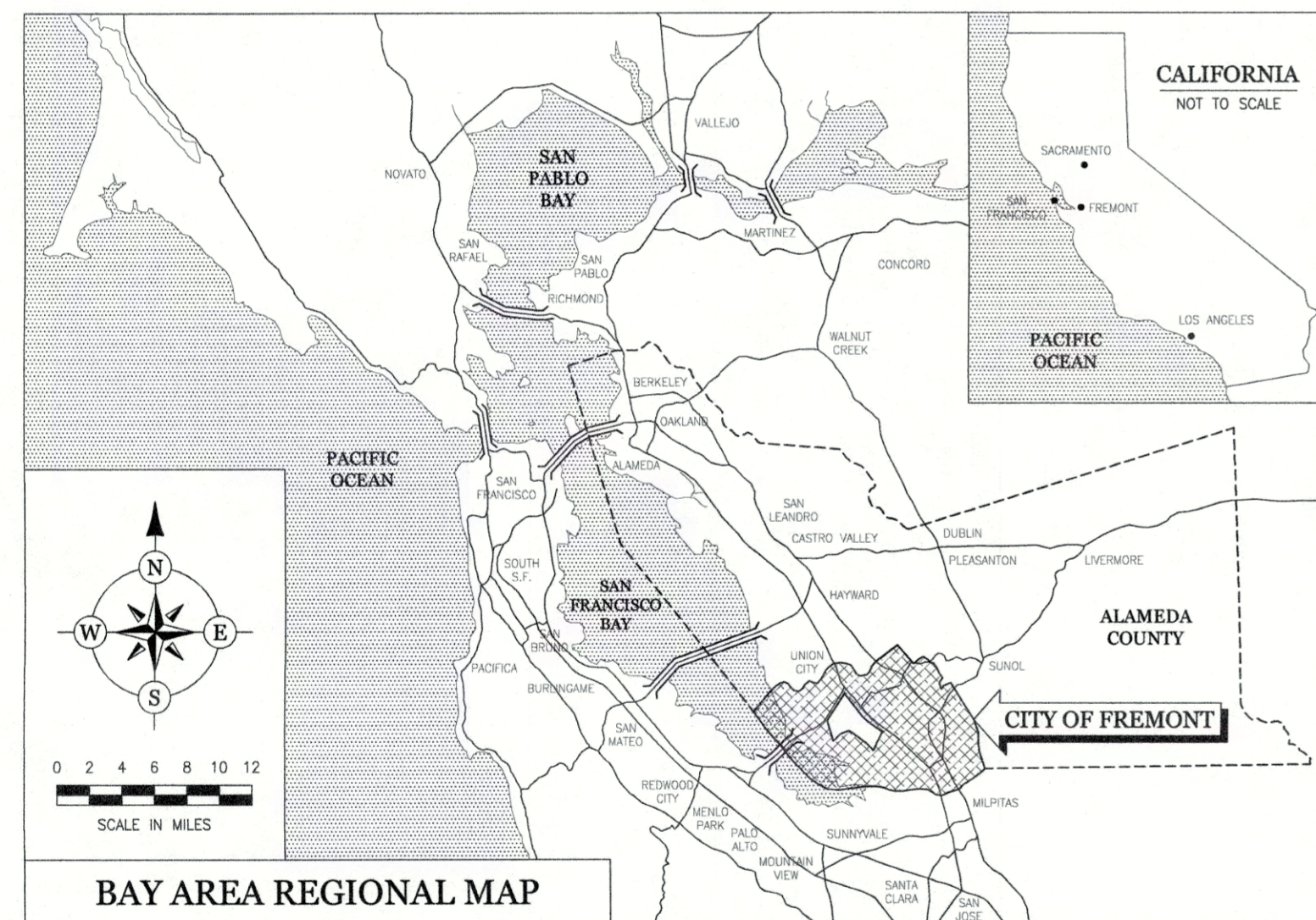


CALIFORNIA NURSERY HISTORICAL PARK RETAIL BUILDING DEMOLITION (PWC 8837A)



VICINITY MAP
NOT TO SCALE



BAY AREA REGIONAL MAP

PROJECT DESCRIPTION

PROJECT SCOPE INCLUDES, BUT NOT LIMITED TO THE DEMOLITION OF THE EXISTING HISTORIC RETAIL BUILDING AT THE CALIFORNIA NURSERY HISTORICAL PARK. THE SCOPE INCLUDES HAND DEMOLITION AND STOCKPILING OF SELECTED BUILDING AND TRELLIS POSTS AND BEAMS, AND DOORS TO BE SALVAGED, DISPOSAL OF MATERIALS NOT DEEMED TO BE SALVAGED, INCLUDING ROOFING MATERIAL, CONCRETE PAVING AND FOUNDATIONS. SALVAGED MATERIALS SHALL BE PLACED ON SITE FOR FUTURE USE.

GENERAL NOTES

- AT LEAST TWO WORKING DAYS PRIOR TO CONSTRUCTION, THE CONTRACTOR SHALL CALL THE UNDERGROUND SERVICE ALERT FOR UTILITY LOCATIONS. PHONE: 1-800-227-2600.
- THE CONTRACTOR SHALL PROVIDE ALL LIGHTS, SIGNS, BARRICADES, FLAGMEN OR OTHER DEVICES NECESSARY TO PROVIDE FOR PUBLIC SAFETY.
- IT SHALL BE THE RESPONSIBILITY OF THE CONTRACTOR TO COORDINATE ALL NECESSARY UTILITY RELOCATIONS WITH THE APPROPRIATE UTILITY COMPANY.
- REFER TO OTHER SHEETS FOR ADDITIONAL NOTES AND LEGENDS PERTAINING TO SPECIFIC ITEMS OF WORK.
- THE CONTRACTOR IS ENCOURAGED TO USE RECLAIMED WATER GENERATED BY UNION SANITARY DISTRICT (USD) FOR CONSTRUCTION ACTIVITIES. FOR FURTHER INFORMATION, CONTACT USD AT (510) 477-7500.
- LOCATION OF EXISTING FACILITIES WERE TAKEN PARTIALLY FROM RECORDS AND MAY BE INCOMPLETE. THE CONTRACTOR SHALL DETERMINE THE EXACT LOCATION OF ALL UTILITIES PRIOR TO ANY EXCAVATION OR TRENCHING IN THEIR LOCALITY. THE UTILITY AGENCIES IN THE CITY OF FREMONT ARE:

ALAMEDA COUNTY WATER DISTRICT
43885 SOUTH GRIMMER BOULEVARD
FREMONT, CA 94537
PHONE: (510) 659-1970

TIME WARNER TELECOM
1340 TREAT BLVD, SUITE 100
WALNUT CREEK, CA 94597
PHONE: (925) 953-7093

ALAMEDA COUNTY FLOOD CONTROL & WATER CONSERVATION DISTRICT
399 ELMHURST STREET
HAYWARD, CA 94545
PHONE: (510) 670-5429 (PERMIT)

UNION SANITARY DISTRICT (USD)
5072 BENSON ROAD
UNION CITY, CA 94587-2508
PHONE: (510) 477-7500

A T & T
870 N. MCCARTHY ROAD,
CUBE 1.167
MILPITAS, CA 95035
PHONE: (408) 635-8831

XO COMMUNICATIONS
855 MISSION COURT
FREMONT, CA 94539
PHONE: (510) 580-6363

PACIFIC GAS & ELECTRIC CO.
41800 BOSCELL ROAD
FREMONT, CA 94538
PHONE: (510) 683-3025

COMCAST
8470 PARDEE ROAD
OAKLAND, CA 94621
PHONE: (510) 567-9213

PUBLIC SAFETY REQUIREMENTS

- DURING DEMOLITION** - THE CONTRACTOR SHALL MAINTAIN A 20 FOOT WIDE ALL WEATHER-PAVING SURFACE (PAVING) FOR EMERGENCY VEHICLE ACCESS WITHIN 150 FEET OF ALL DEMOLITION OR COMBUSTIBLE STORAGE. THIS ACCESS SHALL BE PROVIDED BEFORE ANY DEMOLITION OR COMBUSTIBLE STORAGE WILL BE ALLOWED.
- DURING DEMOLITION** - PERSONNEL OPERATING AT THE DEMOLITION SITE SHALL HAVE A MEANS OF COMMUNICATING AND REPORTING A FIRE OR MEDICAL EMERGENCY. THIS REQUIREMENT MAY BE MET BY USE OF A CELLULAR TELEPHONE AND BY DIALING 911.
- THE APPLICANT MUST IMMEDIATELY NOTIFY THE FREMONT FIRE DEPARTMENT, HAZARDOUS MATERIALS UNIT (510-494-4282) OF ANY UNDERGROUND PIPES, TANKS OR STRUCTURES; ANY SUSPECTED OR ACTUAL CONTAMINATED SOILS; OR OTHER ENVIRONMENTAL ANOMALIES ENCOUNTERED DURING SITE DEVELOPMENT ACTIVITIES. ANY CONFIRMED ENVIRONMENTAL LIABILITIES WILL NEED TO BE REMEDIATED PRIOR TO PROCEEDING WITH THE DEMOLITION.

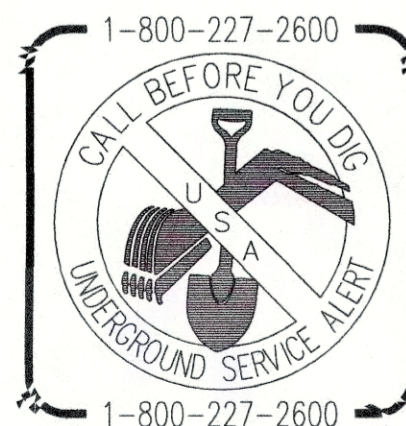
APPLICABLE CODES AND REGULATIONS

CALIFORNIA BUILDING CODE (CBC) AND CITY OF FREMONT ORDINANCE NUMBERS:
 CALIFORNIA FIRE CODE 2016 EDITION (CFC) #20-2016
 CALIFORNIA BUILDING CODE 2010 EDITION (CBC) #23-2013
 CALIFORNIA MECHANICAL CODE 2010 EDITION (CBC) #23-2013
 CALIFORNIA PLUMBING CODE 2010 EDITION (CBC) #23-2013
 CALIFORNIA ELECTRIC CODE 2010 EDITION (CBC) #23-2013
 ENERGY EFFICIENT STANDARDS 2008 EDITION (CBC) (TITLE 24)

SCHEDULE OF DRAWINGS		
SHEET	DRAWING	DESCRIPTION
1	L1.0	TITLE SHEET
2	L2.0	RETAIL BUILDING & SITE DEMOLITION PLAN
3	L2.1	BID ALTERNATE #1 DEMOLITION SCOPE
4	L3.0	EXISTING CONDITIONS - EXTERIOR
5	L4.0	EXISTING CONDITIONS - INTERIOR

ABBREVIATIONS - (ADDITIONAL ABBREVIATIONS MAY BE LOCATED ON SPECIFIC SHEETS)

AB	AGGREGATE BASE	DG	DECOMPOSED GRANITE	INV	INVERT	RCV	REMOTE CONTROL VALVE
AC	ASPHALT CONCRETE	DJ	DEEP JOINT	IRR	IRRIGATION SPRINKLER HEADS	ROW	RIGHT OF WAY
BC	BOTTOM OF CURB	DI	DRAINAGE INLET	LF	LINEAR FEET	RW	RETAINING WALL
BLDG	BUILDING	DWTC	DRIVEWAY TOP OF CURB	LOW	LIMIT OF WORK	SC	SAW CUT
BM	BENCH MARK	(E)	EXISTING	MAX	MAXIMUM	SCH	SCHEDULE
BMP	BEST MANAGEMENT PRACTICES	EOC	END OF CURVE	MH	MANHOLE	SG	SUBGRADE
BW	BOTTOM OF WALK	EM	ELECTRICAL METER	MIN	MINIMUM	SD	STORM DRAIN
BPU	BACKFLOW PREVENTER UNIT	EP	EDGE OF PAVEMENT	MON	MONUMENT	SDE	STORM DRAIN EASEMENT
BOC	BEGINNING OF CURVE	EPB	ELECTRICAL PULL BOX	MOW	MOWSTRIP	SDMH	STORM DRAIN MANHOLE
BOW	BACK OF WALL	EQ	EQUAL	(N)	NEW	SHR	SHRUB
BT	BOTTOM OF TRENCH	EW	EDGE OF WALK	NTS	NOT TO SCALE	SL	STREET LIGHT/ELECTROLIER
CB	CATCH BASIN	FCE	FENCE	O.C.	ON CENTER	SLPB	STREET LIGHT PULL BOX
CIP	CAST IN PLACE	FF	FINISHED FLOOR	O.D.	OUTSIDE DIAMETER	SP	SPOT ELEVATIONS
CJ	COLD JOINT	FG	FINISHED GRADE	PB/HH	PULLBOX / HAND HOLE	SS	SANITARY SEWER
CLF	CHAIN LINK FENCE	FS	FINISHED SURFACE	PCC	PORTLAND CEMENT CONCRETE	SSE	SANITARY SEWER EASEMENT
CL	CENTERLINE	FTF	FACE TO FACE	PLTR	PLANTER	SSMH	SANITARY SEWER MANHOLE
CLR	CLEAR	GB	GRADE BREAK	POC	POINT OF CONNECTION	SW	SIDEWALK
CO	CLEANOUT	GM	GA METER	PP	POWER POLE	TB	TOP OF SLOPE
CONC	CONCRETE	GR	GRATE	P.U.E.	PUBLIC UTILITY EASEMENT	TC	TOP OF CURB
CONF	CONFORM	GND	GROUND	PVC	POLYVINYL CHLORIDE PIPE	TEMP	TEMPORARY
COTG	CLEANOUT TO GRADE	GV	GAS VALVE	OCV	QUICK COUPLER VALVE	TOF	TOP OF FOOTING
CP	CONCRETE PAD	HVCAB	HIGH VOLTAGE CABINET	R	RADIUS	TW	TOP OF WALL
CTC	CENTER TO CENTER	ICC	IRRIGATION CONTROL CABINET	TRCP	REINFORCED CONCRETE PIPE	WW	WALKWAY



Khandan Bahmani 1-30-2019
APPROVED --- KHANDAN BAHMANI, CITY ENGINEER DATE

Juan Barajas 1-30-19
APPROVED --- JUAN BARAJAS, PARKS SUPERINTENDENT DATE



APPROVED - SENIOR LANDSCAPE ARCHITECT

CALIFORNIA NURSERY HISTORICAL PARK RETAIL BUILDING DEMOLITION TITLE SHEET, SCHEDULE OF DRAWINGS

COMMUNITY SERVICES DEPARTMENT
LANDSCAPE ARCHITECTURE DIVISION

DATE 1/30/19

RECOMMENDED PROJECT MANAGER

DATE 1/29/19

CITY PROJECT NO. (PWC):
8837A

SCALE:
N/A

DRAWING:

CITY BID NO.:
19-012

0 +-----+ 1"
NOTE: VERIFY SCALE. BAR IS ONE INCH ON ORIGINAL DRAWING. ADJUST SCALES ACCORDINGLY IF BAR IS NOT ONE INCH.

L1.0

DESIGNED BY:
RL

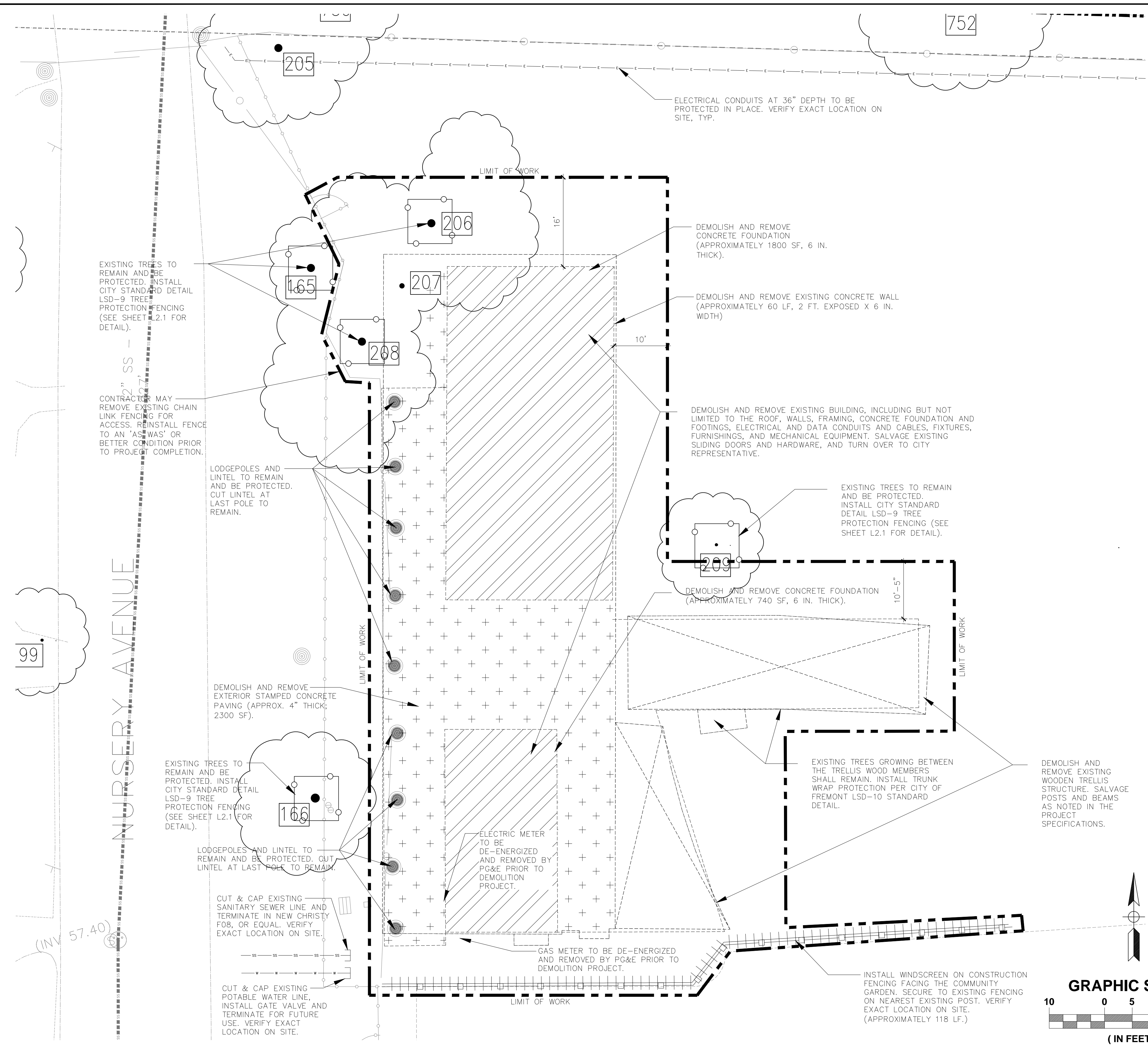
CHECKED BY:
MM

DRAWN BY:
RL

DATE:
FEB 2019

SHEET 1 OF 5

FILE: T:\LANDARCH\PROJECT DIRECTORY\PROJECT\California Nursery Master Plan\PHASE 1 IMPLEMENTATION\CAD\8837 CA Nursery-RIBldg-Demo.dwg
 PLOT DATE: Feb 01, 2019 - 4:01pm



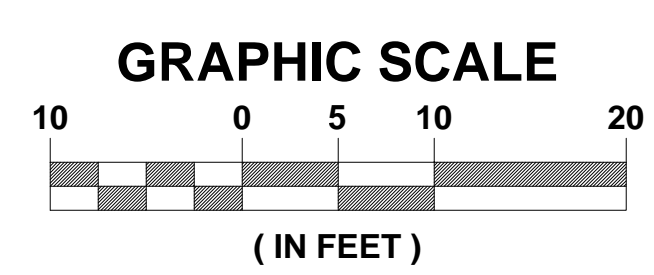
- EXISTING TREES SHALL REMAIN AND BE PROTECTED PER CITY STANDARD REQUIREMENTS.
- LIMIT OF WORK, CONTRACTOR ACCESS AND TEMPORARY CONSTRUCTION FENCE LOCATIONS ARE SHOWN SEPARATELY FOR GRAPHIC CLARITY ONLY. CONTRACTOR SHALL COORDINATE EXACT LOCATIONS AND DEVICES WITH PROJECT ENGINEER AND CITY REPRESENTATIVES PRIOR TO INSTALLATION.
- SALVAGED ITEMS SHALL BE PLACED BY CONTRACTOR AT A LOCATION WITHIN THE CALIFORNIA NURSERY PARK SITE. COORDINATE WITH CITY REPRESENTATIVE FOR EXACT LOCATION.
- LOCATION OF EXISTING UTILITIES SHOWN ARE APPROXIMATE FOR ESTIMATION PURPOSES ONLY. CONTRACTOR SHALL POTHOLE AS NEEDED TO VERIFY LOCATION OF UTILITY FOR REMOVAL.
- REMOVE ALL MISCELLANEOUS DEBRIS FROM WITHIN THE LIMITS OF WORK AS PART OF GENERAL DEMOLITION.
- UPON COMPLETION OF DEMOLITION, THE ENTIRE LIMIT DESIGNATED TO BE HYDROSEEDING SHALL BE DISKED PRIOR TO HYDROSEEDING.
- PROJECT GOAL IS TO LEAVE THE SITE FREE OF ALL DEBRIS AND UNDERGROUND UTILITIES WITH THE EXCEPTION OF THE EXISTING STORM DRAINAGE SYSTEM TO ALLOW FUTURE CONSTRUCTION TO COMMENCE WITHOUT FURTHER DEMOLITION.
- AT THE CONTRACTOR'S DISCRETION, THE EQUIPMENT STORAGE AND STAGING MAY OCCUR ANYWHERE WITHIN THE LIMITS OF WORK OR AT AREA TO BE DESIGNATED IN THE MAIN PARKING LOT. AT NO POINT MAY THE CONTRACTOR STORE EQUIPMENT OR MATERIALS WITHOUT IMPLEMENTING PROPER BEST MANAGEMENT PRACTICES TO PROTECT THE SITE FROM SPILLS, CONTAMINATION, OR OTHER DAMAGE FROM CONTRACTOR'S ACTIVITIES.
- FOR BIDDING PURPOSES, THE APPROXIMATE DEPTH OF BUILDING CONCRETE FOUNDATION IS 6 IN., AND THE EXTERIOR STAMPED CONCRETE PAVING AT 4 IN. DEPTH.
- ALL DISTURBED SOIL AREAS SHALL BE GENERALLY LEVELED AND HYDROSEEDING PER SPECIFICATIONS.
- WOOD MEMBERS (POST & LINTELS) IDENTIFIED TO BE SALVAGED SHALL BE STOCKPILED AT A LOCATION WITHIN THE PARK SITE. EXACT LOCATION TO BE DETERMINED. WOOD MEMBERS THAT HAVE TERMITE INFESTATION OR ROT TO BE DISPOSED OFF BY CONTRACTOR. SEE SPECIFICATIONS FOR ADDITIONAL INFORMATION. COORDINATE WITH CITY REPRESENTATIVE.

ENVIRONMENTAL SERVICES DEPARTMENT INTEGRATED WASTE MANAGEMENT NOTES

- ALL UTILITY ABATEMENT OF HAZARDOUS MATERIALS (LEAD PAINT, ASBESTOS CONTAINING MATERIALS) SHALL BE PERFORMED PRIOR TO DEMOLITION, PROVIDE A COPY OF ALL MANIFEST FROM DISPOSAL TO THE CITY OF FREMONT, ENVIRONMENTAL SERVICES DIVISION.
- THIS PROJECT WILL GENERATE DEBRIS THAT MUST BE RECYCLED. ALL DEBRIS BOXES MUST BE PROVIDED BY THE CITY'S ONLY APPROVED HAULER, REPUBLIC SERVICES. NO OTHER ENTITY IS AUTHORIZED TO COLLECT OR TRANSPORT MATERIAL FROM FREMONT IN A DEBRIS BOX. THERE IS AN EXCEPTION FOR DEBRIS BOXES CONTAINING ONLY SOIL, CONCRETE OR ASPHALT. ALTERNATELY, THE CONTRACTOR MAY REMOVE DEBRIS FROM THE PREMISES AND SELF-HAUL THE MATERIAL TO AN APPROVED FACILITY, USING THEIR OWN EMPLOYEES, EQUIPMENT AND VEHICLES, AS AN INCIDENTAL PART OF A TOTAL DEMOLITION SERVICE OFFERED BY THAT CONTRACTOR. CONTRACTORS WHO SELF-HAUL DEBRIS MUST DELIVER THE MATERIAL TO AN APPROVED FACILITY AND SUBMIT THE RECEIPTS TO THE CITY ON A MONTHLY BASIS.
- PLANT AND TREE DEBRIS MUST BE SEPARATED FROM OTHER WASTE. THE ALAMEDA COUNTY WASTE MANAGEMENT AUTHORITY'S (ACWMA) PLANT DEBRIS LANDFILL BAN ORDINANCE (ACWMA ORD. NO. 2008-01) REQUIRES ALL PLANT AND TREE DEBRIS TO BE SEPARATED AND RECYCLED.
- DURING DEMOLITION, 100% OF THE ASPHALT AND CONCRETE MUST BE REUSED OR RECYCLED, AND 65% OF THE REMAINING DEBRIS GENERATED FROM THE PROJECT MUST BE REUSED OR RECYCLED.
- IN ORDER TO RECEIVE FINAL PERMIT APPROVAL, APPLICANT MUST SAVE ALL RECEIPTS FROM DISPOSAL AND RECYCLING TO TURN IN AT THE COMPLETION OF THE PROJECT.
- ALL DISPOSAL AND RECYCLING RECEIPTS MUST OFFICIALLY LIST FREMONT AS THE CITY OF ORIGIN TO BE COUNTED TOWARD THE DIVERSION REQUIREMENT.
- CONTAMINATED OR HAZARDOUS MATERIAL IS EXEMPT FROM THE RECYCLING REQUIREMENT. HOWEVER, APPLICANT MUST SUBMIT COPIES OF THE MANIFEST TO THE ENVIRONMENTAL SERVICES DIVISION FOR ALL HAZARDOUS MATERIALS REMOVED. COORDINATE WITH CITY PROJECT MANAGER SO THAT THE CITY CAN PROVIDE THE CONTRACTOR AN EPA GENERATOR ID NUMBER. NOTE THAT THIS NEEDS TO BE CLOSED WITHIN NINETY (90) DAYS OF OPENING.
- WITHIN TEN (10) DAYS OF THE NOTICE TO PROCEED, APPLICANT MUST SUBMIT A WASTE HANDLING PLAN AND ENVIRONMENTAL SERVICES DEPARTMENT ACKNOWLEDGEMENT FORM.

LEGEND

- LIMIT OF WORK
- DEMOLISH AND REMOVE CONCRETE FOUNDATION, INCLUDING BASE ROCK (APPROXIMATELY 2560 SF, 6 IN. THICK). GRADE TO BE GENERALLY LEVEL, AND HYDROSEED PER SPECIFICATIONS. SEE SHEETS L3.0 AND L4.0 FOR ADDITIONAL INFORMATION.
- DEMOLISH AND REMOVE EXTERIOR STAMPED CONCRETE PAVING (APPROXIMATELY 4" THICK; 2320 SF). GRADE TO BE GENERALLY LEVEL, AND HYDROSEED PER SPECIFICATIONS. SEE SHEETS L3.0 AND L4.0 FOR ADDITIONAL INFORMATION.
- TEMPORARY CONSTRUCTION FENCING WITH WINDSCREEN FABRIC, PER SPECIFICATIONS.
- EXISTING TREES TO REMAIN AND BE PROTECTED. INSTALL CITY STANDARD DETAIL LSD-9 TREE PROTECTION FENCING (SEE SHEET L2.1 FOR DETAIL).



No.	DATE	REVISION	BY	APPD



CITY OF Fremont
 APPROVED - SENIOR LANDSCAPE ARCHITECT
[Signature]

**CALIFORNIA NURSERY HISTORICAL PARK
 RETAIL BUILDING DEMOLITION
 RETAIL BUILDING & SITE DEMOLITION PLAN
 COMMUNITY SERVICES DEPARTMENT
 LANDSCAPE ARCHITECTURE DIVISION**

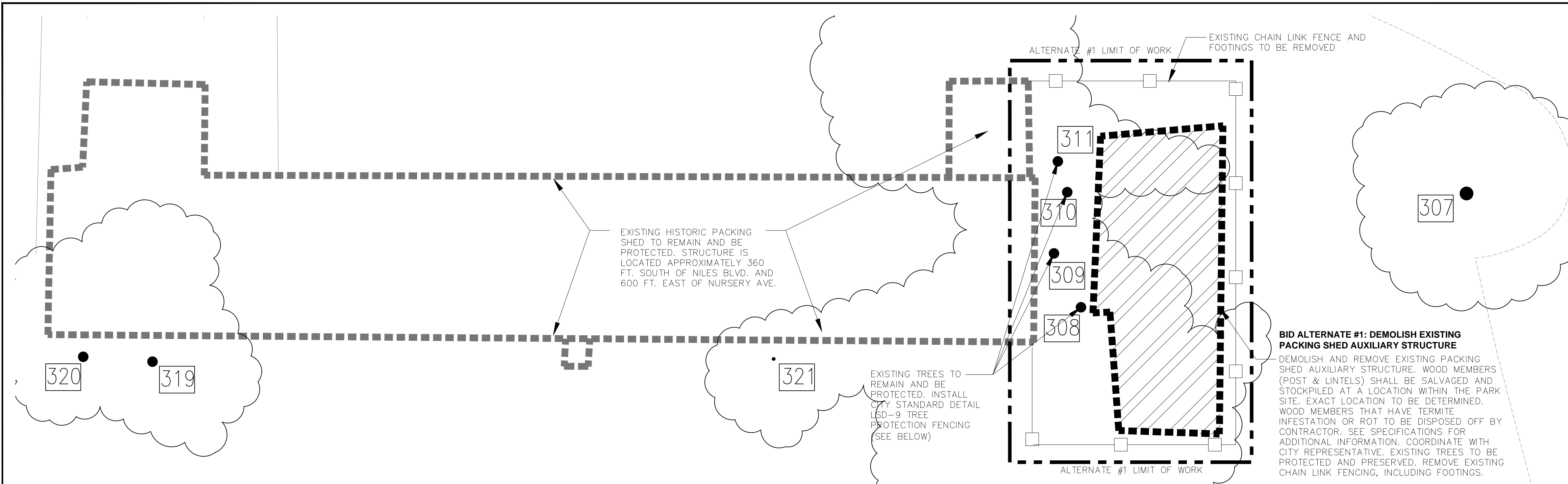
DATE: 2/1/2019
 RECOMMENDED - PROJECT MANAGER
[Signature]
 DATE: 2/1/2019

CITY PROJECT NO. (PWC): 8837A
 CITY BID NO.: 19-012
 DESIGNED BY: RL
 CHECKED BY: MM
 DRAWN BY: RL
 DATE: FEB 2019

SCALE: 1"=10'-0"
 0 1" 10'
 NOTE: VERIFY SCALE. BAR IS ONE INCH ON ORIGINAL DRAWING. ADJUST SCALES ACCORDINGLY IF BAR IS NOT ONE INCH.

DRAWING: **L2.0**
 SHEET 2 OF 5

FILE: T:\LANDARCH\PROJECT DIRECTORY\CA\Nursery Master Plan\PHASE 1 IMPLEMENTATION\CAD\8837 CA Nursery-RIBldg-Demo.dwg
 PLOT DATE: Feb 01, 2019 - 4:03pm



BID ALTERNATE #1: DEMOLISH EXISTING PACKING SHED AUXILIARY STRUCTURE
 DEMOLISH AND REMOVE EXISTING PACKING SHED AUXILIARY STRUCTURE. WOOD MEMBERS (POST & LINTELS) SHALL BE SALVAGED AND STOCKPILED AT A LOCATION WITHIN THE PARK SITE. EXACT LOCATION TO BE DETERMINED. WOOD MEMBERS THAT HAVE TERMITE INFESTATION OR ROT TO BE DISPOSED OFF BY CONTRACTOR. SEE SPECIFICATIONS FOR ADDITIONAL INFORMATION. COORDINATE WITH CITY REPRESENTATIVE. EXISTING TREES TO BE PROTECTED AND PRESERVED. REMOVE EXISTING CHAIN LINK FENCING, INCLUDING FOOTINGS.



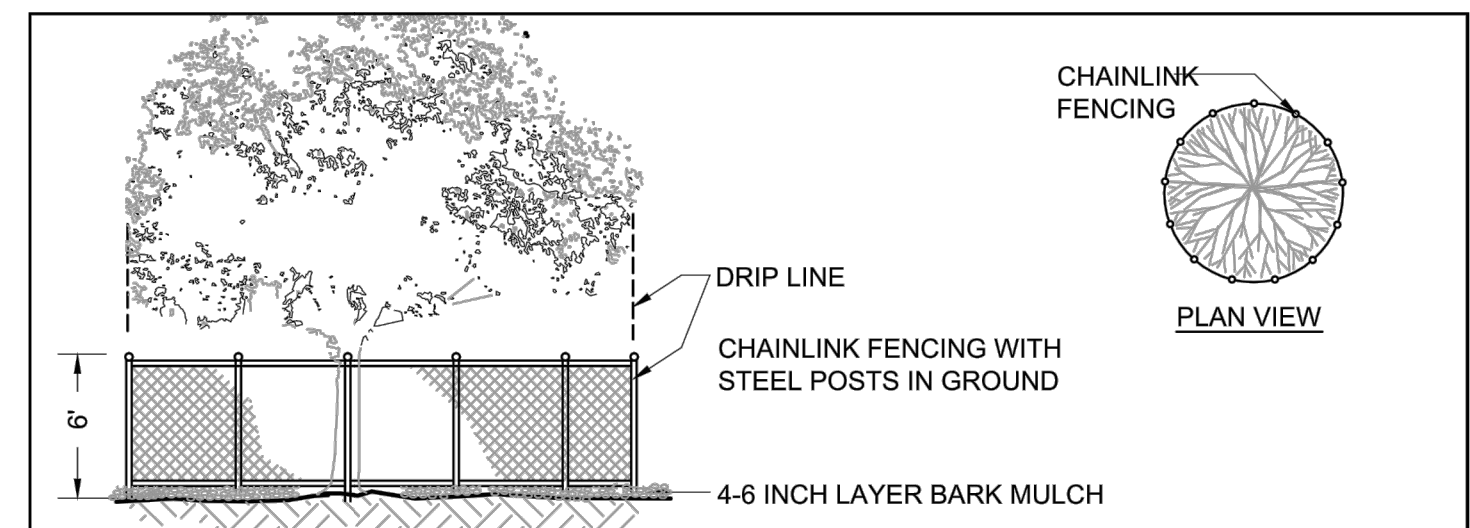
1 BUILDING - SOUTH



3 BUILDING - NORTH



2 BUILDING - EAST



- TREE PROTECTION NOTES**
- CURRENT STANDARD DETAIL AT CITY ENGINEERING DIVISION SHALL PREVAIL.
 - TREE PROTECTION MEASURES MUST BE IN PLACE BEFORE CONSTRUCTION, DEMOLITION AND/OR GRADING ACTIVITIES COMMENCE. CITY OF FREMONT WILL STOP CONSTRUCTION IF TREE PROTECTION MEASURES ARE NOT IN PLACE AND MAINTAINED THROUGHOUT THE CONSTRUCTION PERIOD.
 - TREES CALLED OUT FOR PRESERVATION SHALL BE FENCED AT THE DRIPLINE. FENCING MAY OCCUR AT THE COMBINED DRIPLINES OF GROVES OF TREES. PLACE 4-6 INCH BARK MULCH BENEATH DRIPLINES OF TREES TO BE PRESERVED. KEEP BARK 2-3 FEET FROM TREE TRUNK.
 - FENCING SHALL BE 6 FEET TALL CHAIN LINK FENCING WITH STEEL POSTS EMBEDDED IN THE GROUND.
 - NO GRADING SHALL OCCUR WITHIN THE DRIPLINES/FENCED AREA OF EXISTING TREES.
 - NO CONSTRUCTION MATERIALS OR CONSTRUCTION VEHICLES MAY BE STORED WITHIN THE DRIPLINES/FENCED AREA OF EXISTING TREES.
 - CONSTRUCTION VEHICLES OR MACHINERY MAY NOT PASS BETWEEN TWO OR MORE EXISTING TREES IDENTIFIED FOR PRESERVATION IF THEIR CANOPIES ARE WITHIN 10 FEET OF TOUCHING. ADDITIONAL FENCING MAY BE REQUIRED BY THE CITY AS NEEDED.
 - THE CONTRACTOR IS REQUIRED TO HAVE AN ARBORIST CERTIFIED BY THE INTERNATIONAL SOCIETY OF ARBORICULTURE (ISA), APPROVED BY THE CITY, ON SITE IF SITE CONSTRUCTION EFFORTS REQUIRE REMOVAL OF EXISTING ROOTS OR BRANCH PRUNING. ROOTS APPROVED FOR CUTTING MUST BE CUT CLEANLY WITH A SAW. RIPPING OR SHREDDING ROOTS SUBJECT TO FINE/PENALTY.
 - UNAUTHORIZED TREE REMOVAL IS SUBJECT TO REPLACEMENT EQUAL TO THE APPRAISED VALUE OF THE TREE LOST PER FMC 4-5108.
 - THE CONTRACTOR IS REQUIRED TO WATER, FERTILIZE AND ATTEND TO OTHER MAINTENANCE NEEDS OF EXISTING TREES TO MAINTAIN HEALTHY GROWTH THROUGHOUT THE CONSTRUCTION PERIOD. AN EARTH BERM MEASURING MINIMUM 6 FEET IN DIAMETER, AND 6 INCHES IN HEIGHT SHALL BE CONSTRUCTED AT THE BASE OF EACH TREE TO FUNCTION AS A TEMPORARY WATERING BASIN DURING THE CONSTRUCTION PERIOD. TREES SHALL BE WATERED ACCORDING TO WEATHER AND TREE SPECIES REQUIREMENTS.
 - IF TREES ARE BEING RELOCATED: RELOCATION OF EXISTING TREES SHALL OCCUR UNDER THE OBSERVATION AND DIRECTION OF A CERTIFIED ARBORIST APPROVED BY THE CITY OF FREMONT.
 - TRUNK WRAP PROTECTION SHALL OCCUR FOR TREES SITUATED IN SMALL TREE WELLS OR SIDEWALK PLANTERS. THIS FORM OF PROTECTION WILL BE ALLOWED BY APPROVAL FROM SENIOR LANDSCAPE ARCHITECT ONLY. REFER TO LSD-10.

CITY OF FREMONT STANDARD DETAILS CITY STANDARD TREE PROTECTION FENCING				DATE APPROVED BY CITY COUNCIL 12/13/11
REVISIONS				RESOLUTION NO. 2006-31
APPR	REVISED	DATE		<i>Thomas Hughes</i>
FILE NO.	SCALE	DRAWN	CHECKED	CITY ENGINEER
LSD-9.DWG	1/8" = 1'-0"	PM/MM	RER	DWG NO. LSD-9
			DATE DEC. 2011	1 of 1

No.	DATE	REVISION	BY	APPD
△				
△				
△				
△				



CALIFORNIA NURSERY HISTORICAL PARK
 RETAIL BUILDING DEMOLITION
BID ALTERNATE #1 DEMOLITION SCOPE
 COMMUNITY SERVICES DEPARTMENT
 LANDSCAPE ARCHITECTURE DIVISION

APPROVED - PROJECT MANAGER *[Signature]* DATE 2/1/2019

CITY PROJECT NO. (PWC): 8837A
 CITY BID NO.: 19-012
 DESIGNED BY: RL
 CHECKED BY: MM
 DRAWN BY: RL
 DATE: FEB 2019

SCALE: 1"=10'-0"
 0 5 10 20
 NOTE: VERIFY SCALE. BAR IS ONE INCH ON ORIGINAL DRAWING. ADJUST SCALES ACCORDINGLY IF BAR IS NOT ONE INCH.

DRAWING:
L2.1
 SHEET 3 OF 5

FILE: T:\LANDARCH\PROJECT DIRECTORY\California Nursery Master Plan\PHASE 1 IMPLEMENTATION\CAD\8837 CA Nursery-RIBldg-ExCond.dwg
 PLOT DATE: Feb 01, 2019 - 4:04pm



1 BUILDING - WEST

PRESERVE EXIST. TREE, TYP.



2 ROOF



3 BUILDING - EAST



4 BUILDING - NORTHWEST

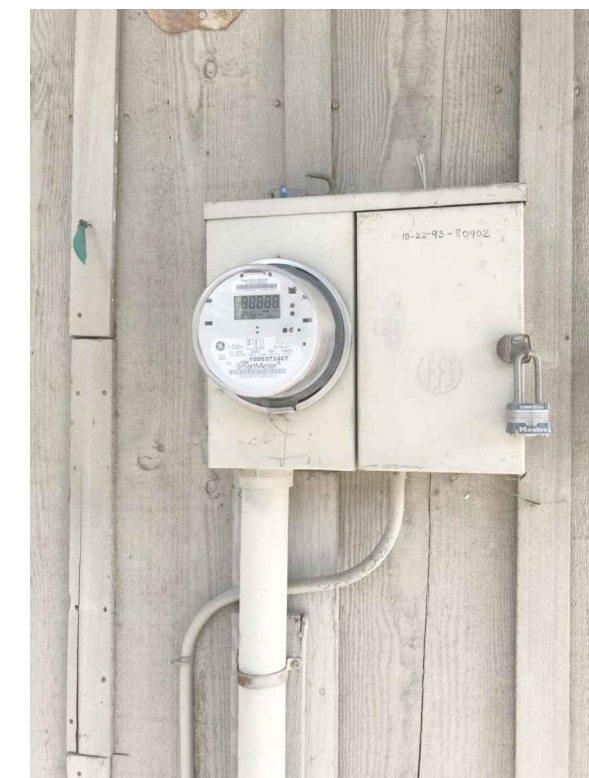
LOGGPOLES AND LINTEL TO REMAIN AND BE PROTECTED, TYP.



5 BUILDING - WEST



6 BUILDING - NORTH



7 ELECTRIC METER #1005372467



8 GAS METER #36344264

METERS TO BE DE-ENERGIZED BY PG&E PRIOR TO DEMOLITION PROJECT



9 DOORS AND HARDWARE
SALVAGE DOORS AND HARDWARE; TURN OVER TO CITY REPRESENTATIVE



10 TRELLIS STRUCTURE

POSTS AND BEAMS TO BE REMOVED AND SALVAGED, TYP. SEE SHEET L2.0 AND SPECIFICATIONS FOR ADDITIONAL INFORMATION.



11 BUILDING - SUPPORTS



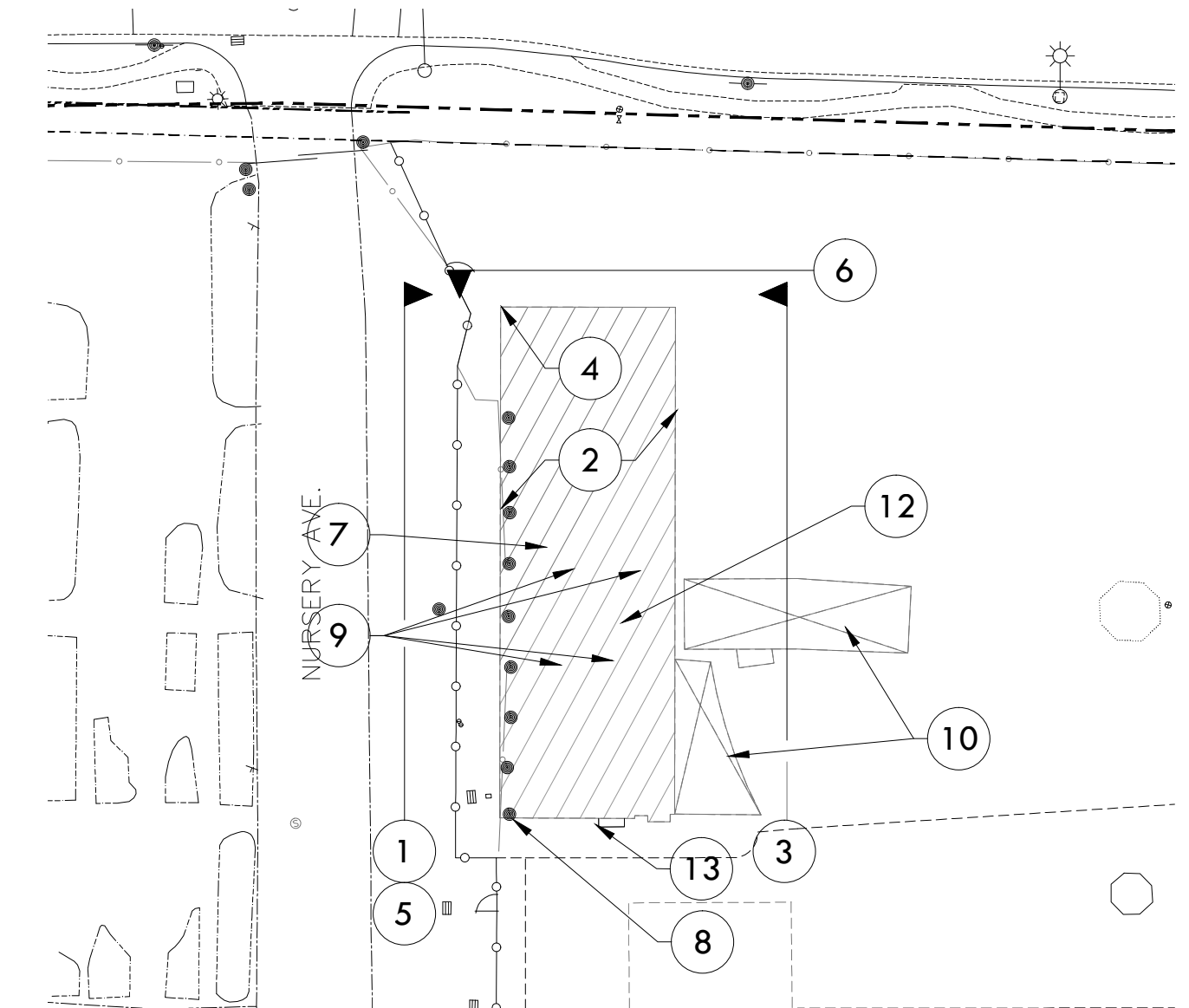
12 COURTYARD



13 BUILDING - SOUTH



14 FOUNTAIN & DOMESTIC WATER



BUILDING KEY MAP
NOT TO SCALE

No.	DATE	REVISION	BY	APPD
△				
△				
△				
△				



APPROVED - SENIOR LANDSCAPE ARCHITECT

DATE 2/1/2019

RECOMMENDED - PROJECT MANAGER

DATE 2/1/2019

CALIFORNIA NURSERY HISTORICAL PARK
 RETAIL BUILDING DEMOLITION
EXISTING CONDITIONS - EXTERIOR
 COMMUNITY SERVICES DEPARTMENT
 LANDSCAPE ARCHITECTURE DIVISION

CITY PROJECT NO. (PWC): 8837A

CITY BID NO.: 19-012

DESIGNED BY: RL

DRAWN BY: RL

CHECKED BY: MM

DATE: FEB 2019

SCALE: N/A

0 1 2 3 4 5 6 7 8 9 10 11 12 13 14 15 16 17 18 19 20
 NOTE: VERIFY SCALE. BAR IS ONE INCH ON ORIGINAL DRAWING. ADJUST SCALES ACCORDINGLY IF BAR IS NOT ONE INCH.

DRAWING:

L3.0

SHEET 4 OF 5

FILE: T:\LANDARCH\PROJECT DIRECTORY\California Nursery Master Plan\PHASE 1 IMPLEMENTATION\CAD\8837 CA Nursery-RIBldg-ExCond.dwg
 PLOT DATE: Feb 01, 2019 - 4:13pm



A INTERIOR - NORTH WING



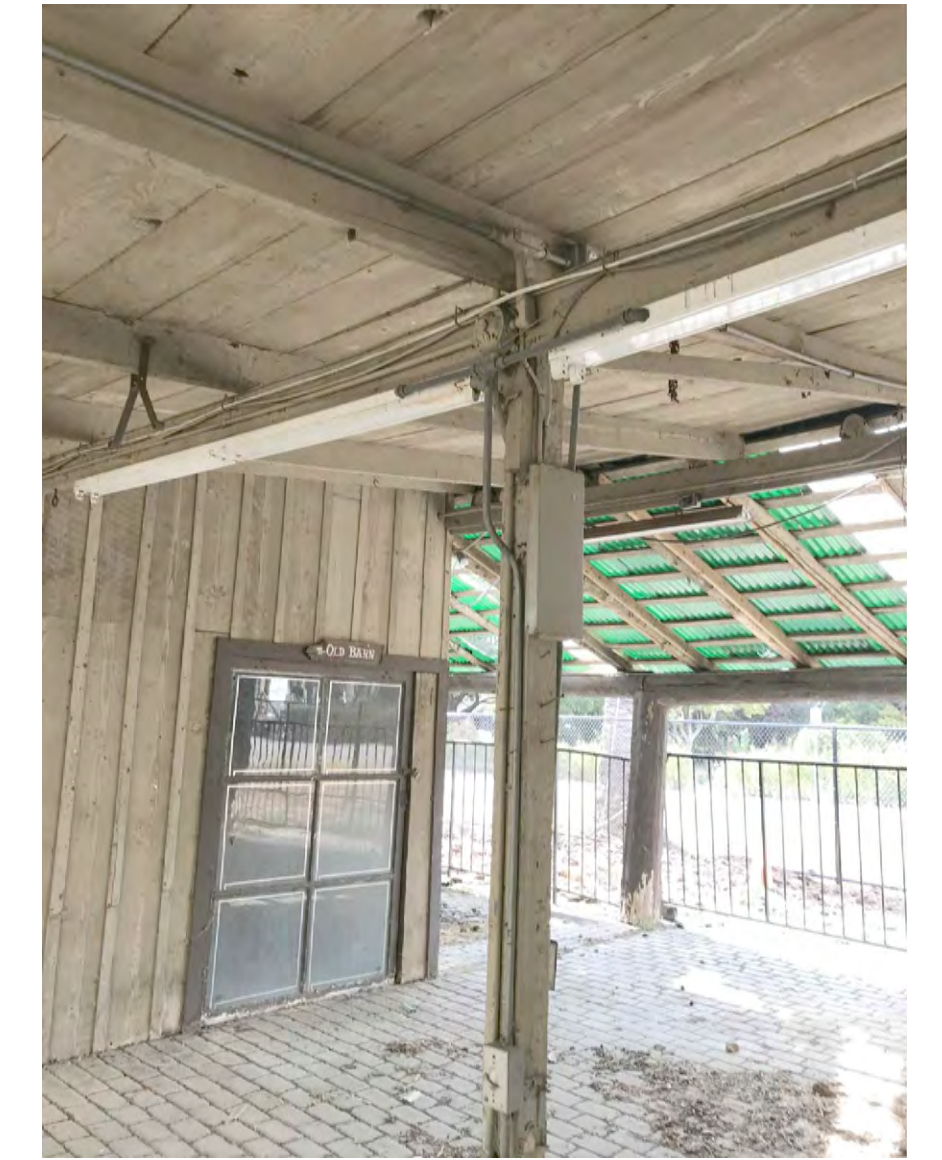
B MECHANICAL EQUIPMENT - NORTH WING



C INTERIOR - NORTH WING



D PATIO - NORTH WING



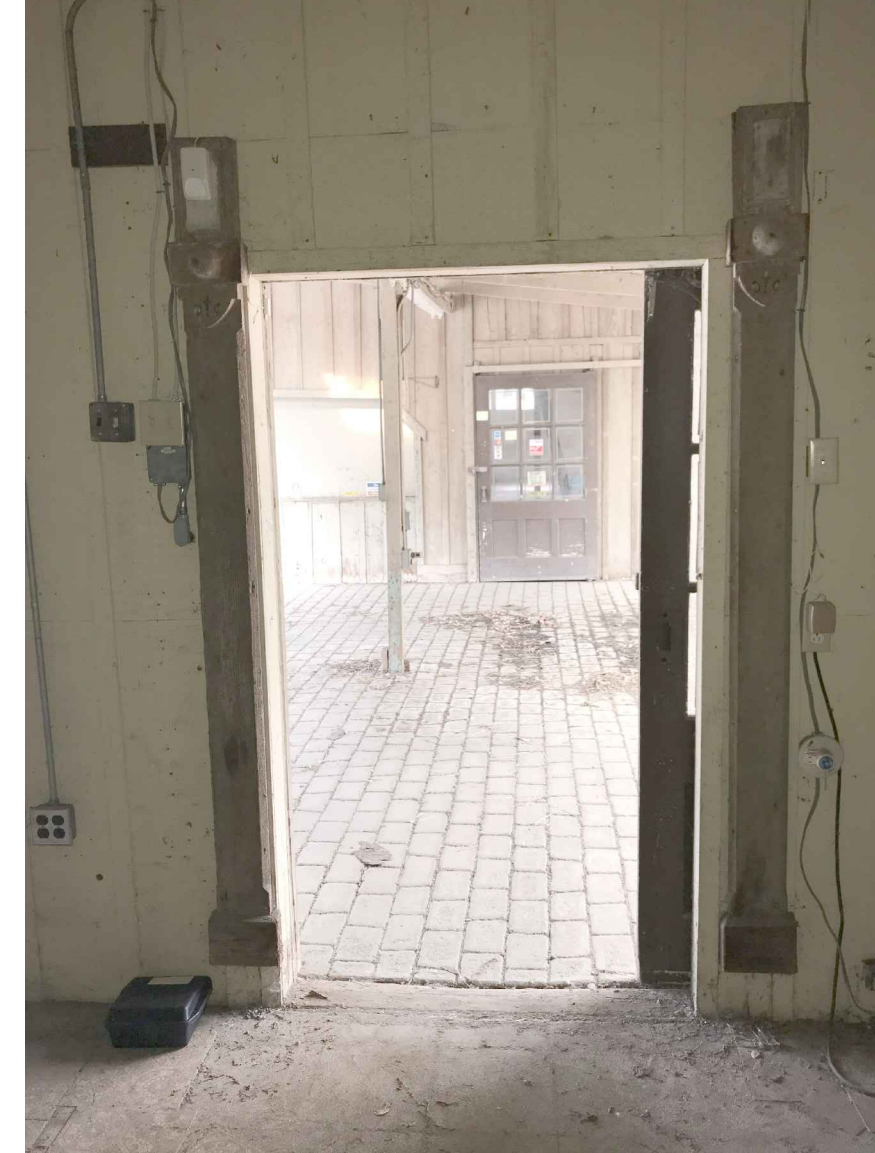
E COURTYARD BETWEEN BUILDING WINGS



F INTERIOR - SOUTH WING



G INTERIOR - SOUTH WING



H INTERIOR - SOUTH WING

No.	DATE	REVISION	BY	APPD
△				
△				
△				
△				



CALIFORNIA NURSERY HISTORICAL PARK
 RETAIL BUILDING DEMOLITION
EXISTING CONDITIONS - INTERIOR
 COMMUNITY SERVICES DEPARTMENT
 LANDSCAPE ARCHITECTURE DIVISION

APPROVED - SENIOR LANDSCAPE ARCHITECT
 DATE 2/1/2019

RECOMMENDED - PROJECT MANAGER
 DATE 2/1/2019

CITY PROJECT NO. (PWC): 8837A
 CITY BID NO.: 19-012
 DESIGNED BY: RL
 CHECKED BY: MM
 DRAWN BY: RL
 DATE: FEB 2019

SCALE: N/A
 0 1 2 3 4 5 6 7 8 9 10 11 12 13 14 15 16 17 18 19 20 21 22 23 24 25 26 27 28 29 30 31 32 33 34 35 36 37 38 39 40 41 42 43 44 45 46 47 48 49 50 51 52 53 54 55 56 57 58 59 60 61 62 63 64 65 66 67 68 69 70 71 72 73 74 75 76 77 78 79 80 81 82 83 84 85 86 87 88 89 90 91 92 93 94 95 96 97 98 99 100 101 102 103 104 105 106 107 108 109 110 111 112 113 114 115 116 117 118 119 120 121 122 123 124 125 126 127 128 129 130 131 132 133 134 135 136 137 138 139 140 141 142 143 144 145 146 147 148 149 150 151 152 153 154 155 156 157 158 159 160 161 162 163 164 165 166 167 168 169 170 171 172 173 174 175 176 177 178 179 180 181 182 183 184 185 186 187 188 189 190 191 192 193 194 195 196 197 198 199 200 201 202 203 204 205 206 207 208 209 210 211 212 213 214 215 216 217 218 219 220 221 222 223 224 225 226 227 228 229 230 231 232 233 234 235 236 237 238 239 240 241 242 243 244 245 246 247 248 249 250 251 252 253 254 255 256 257 258 259 260 261 262 263 264 265 266 267 268 269 270 271 272 273 274 275 276 277 278 279 280 281 282 283 284 285 286 287 288 289 290 291 292 293 294 295 296 297 298 299 300 301 302 303 304 305 306 307 308 309 310 311 312 313 314 315 316 317 318 319 320 321 322 323 324 325 326 327 328 329 330 331 332 333 334 335 336 337 338 339 340 341 342 343 344 345 346 347 348 349 350 351 352 353 354 355 356 357 358 359 360 361 362 363 364 365 366 367 368 369 370 371 372 373 374 375 376 377 378 379 380 381 382 383 384 385 386 387 388 389 390 391 392 393 394 395 396 397 398 399 400 401 402 403 404 405 406 407 408 409 410 411 412 413 414 415 416 417 418 419 420 421 422 423 424 425 426 427 428 429 430 431 432 433 434 435 436 437 438 439 440 441 442 443 444 445 446 447 448 449 450 451 452 453 454 455 456 457 458 459 460 461 462 463 464 465 466 467 468 469 470 471 472 473 474 475 476 477 478 479 480 481 482 483 484 485 486 487 488 489 490 491 492 493 494 495 496 497 498 499 500 501 502 503 504 505 506 507 508 509 510 511 512 513 514 515 516 517 518 519 520 521 522 523 524 525 526 527 528 529 530 531 532 533 534 535 536 537 538 539 540 541 542 543 544 545 546 547 548 549 550 551 552 553 554 555 556 557 558 559 560 561 562 563 564 565 566 567 568 569 570 571 572 573 574 575 576 577 578 579 580 581 582 583 584 585 586 587 588 589 590 591 592 593 594 595 596 597 598 599 600 601 602 603 604 605 606 607 608 609 610 611 612 613 614 615 616 617 618 619 620 621 622 623 624 625 626 627 628 629 630 631 632 633 634 635 636 637 638 639 640 641 642 643 644 645 646 647 648 649 650 651 652 653 654 655 656 657 658 659 660 661 662 663 664 665 666 667 668 669 670 671 672 673 674 675 676 677 678 679 680 681 682 683 684 685 686 687 688 689 690 691 692 693 694 695 696 697 698 699 700 701 702 703 704 705 706 707 708 709 710 711 712 713 714 715 716 717 718 719 720 721 722 723 724 725 726 727 728 729 730 731 732 733 734 735 736 737 738 739 740 741 742 743 744 745 746 747 748 749 750 751 752 753 754 755 756 757 758 759 760 761 762 763 764 765 766 767 768 769 770 771 772 773 774 775 776 777 778 779 780 781 782 783 784 785 786 787 788 789 790 791 792 793 794 795 796 797 798 799 800 801 802 803 804 805 806 807 808 809 810 811 812 813 814 815 816 817 818 819 820 821 822 823 824 825 826 827 828 829 830 831 832 833 834 835 836 837 838 839 840 841 842 843 844 845 846 847 848 849 850 851 852 853 854 855 856 857 858 859 860 861 862 863 864 865 866 867 868 869 870 871 872 873 874 875 876 877 878 879 880 881 882 883 884 885 886 887 888 889 890 891 892 893 894 895 896 897 898 899 900 901 902 903 904 905 906 907 908 909 910 911 912 913 914 915 916 917 918 919 920 921 922 923 924 925 926 927 928 929 930 931 932 933 934 935 936 937 938 939 940 941 942 943 944 945 946 947 948 949 950 951 952 953 954 955 956 957 958 959 960 961 962 963 964 965 966 967 968 969 970 971 972 973 974 975 976 977 978 979 980 981 982 983 984 985 986 987 988 989 990 991 992 993 994 995 996 997 998 999 1000

DRAWING:
L4.0
 SHEET 5 OF 5